

ANGPTL1 Antibody (N-term)
Affinity Purified Rabbit Polyclonal Antibody (Pab)
Catalog # AP10105a

Specification

ANGPTL1 Antibody (N-term) - Product Information

Application	WB, FC, IHC-P,E
Primary Accession	O95841
Other Accession	NP_004664.1
Reactivity	Human
Host	Rabbit
Clonality	Polyclonal
Isotype	Rabbit IgG
Antigen Region	12-44

ANGPTL1 Antibody (N-term) - Additional Information

Gene ID 9068

Other Names

Angiopoietin-related protein 1, Angiopoietin-3, ANG-3, Angiopoietin-like protein 1, ANGPTL1, ANG3, ANGPT3, ARP1

Target/Specificity

This ANGPTL1 antibody is generated from rabbits immunized with a KLH conjugated synthetic peptide between 12-44 amino acids from the N-terminal region of human ANGPTL1.

Dilution

WB~~1:1000
FC~~1:10~50
IHC-P~~1:50~100
E~~Use at an assay dependent concentration.

Format

Purified polyclonal antibody supplied in PBS with 0.09% (W/V) sodium azide. This antibody is purified through a protein A column, followed by peptide affinity purification.

Storage

Maintain refrigerated at 2-8°C for up to 2 weeks. For long term storage store at -20°C in small aliquots to prevent freeze-thaw cycles.

Precautions

ANGPTL1 Antibody (N-term) is for research use only and not for use in diagnostic or therapeutic procedures.

ANGPTL1 Antibody (N-term) - Protein Information

Name ANGPTL1

Synonyms ANG3, ANGPT3, ARP1

Cellular Location
Secreted.

Tissue Location

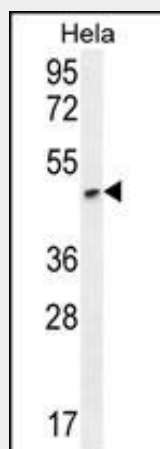
Highly expressed in adrenal gland, placenta, thyroid gland, heart, skeletal muscle and small intestine. Weakly expressed in testis, ovary, colon, pancreas, kidney and stomach

ANGPTL1 Antibody (N-term) - Protocols

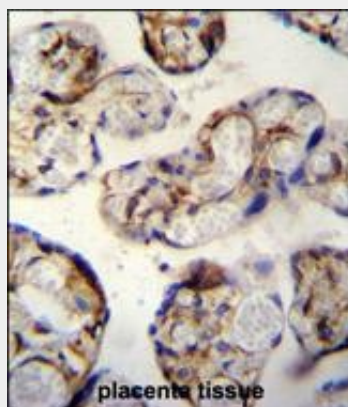
Provided below are standard protocols that you may find useful for product applications.

- [Western Blot](#)
- [Blocking Peptides](#)
- [Dot Blot](#)
- [Immunohistochemistry](#)
- [Immunofluorescence](#)
- [Immunoprecipitation](#)
- [Flow Cytometry](#)
- [Cell Culture](#)

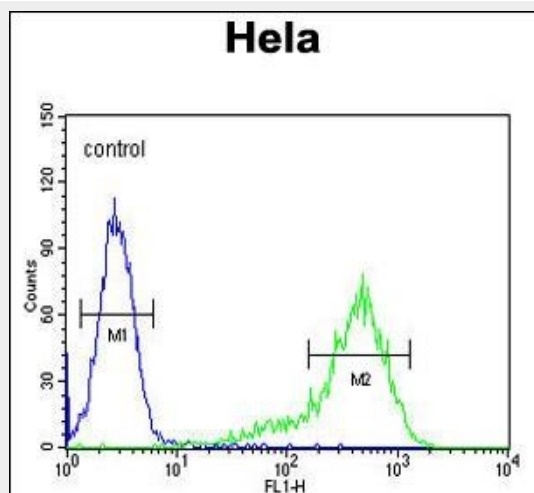
ANGPTL1 Antibody (N-term) - Images



ANGPTL1 Antibody (N-term) (Cat. #AP10105a) western blot analysis in HeLa cell line lysates (35ug/lane). This demonstrates the ANGPTL1 antibody detected the ANGPTL1 protein (arrow).



ANGPTL1 antibody (N-term) (Cat. #AP10105a) immunohistochemistry analysis in formalin fixed and paraffin embedded human placenta tissue followed by peroxidase conjugation of the secondary antibody and DAB staining. This data demonstrates the use of the ANGPTL1 antibody (N-term) for immunohistochemistry. Clinical relevance has not been evaluated.



ANGPTL1 Antibody (N-term) (Cat. #AP10105a) flow cytometric analysis of Hela cells (right histogram) compared to a negative control cell (left histogram). FITC-conjugated goat-anti-rabbit secondary antibodies were used for the analysis.

ANGPTL1 Antibody (N-term) - Background

Angiopoietins are members of the vascular endothelial growth factor family and the only known growth factors largely specific for vascular endothelium. Angiopoietin-1, angiopoietin-2, and angiopoietin-4 participate in the formation of blood vessels. The protein encoded by this gene is another member of the angiopoietin family that is widely expressed in adult tissues with mRNA levels highest in highly vascularized tissues. This protein was found to be a secretory protein that does not act as an endothelial cell mitogen in vitro.

ANGPTL1 Antibody (N-term) - References

- Di Carlo, C., et al. Fertil. Steril. 91(6):2315-2323(2009)
- Post, S., et al. J. Vasc. Res. 45(3):244-250(2008)
- Dhanabal, M., et al. Biochem. Biophys. Res. Commun. 333(2):308-315(2005)
- Smagur, A., et al. Acta Biochim. Pol. 52(4):875-879(2005)
- Lee, H.J., et al. FASEB J. 18(11):1200-1208(2004)