

TIMP4 Antibody (Center)
Affinity Purified Rabbit Polyclonal Antibody (Pab)
Catalog # AP10148c

Specification

TIMP4 Antibody (Center) - Product Information

Application	IHC-P, WB,E
Primary Accession	Q99727
Other Accession	NP_003247.1
Reactivity	Human, Mouse
Host	Rabbit
Clonality	Polyclonal
Isotype	Rabbit IgG
Calculated MW	25503
Antigen Region	48-74

TIMP4 Antibody (Center) - Additional Information

Gene ID 7079

Other Names

Metalloproteinase inhibitor 4, Tissue inhibitor of metalloproteinases 4, TIMP-4, TIMP4

Target/Specificity

This TIMP4 antibody is generated from rabbits immunized with a KLH conjugated synthetic peptide between 48-74 amino acids from the Central region of human TIMP4.

Dilution

IHC-P~~1:50~100

WB~~1:1000

E~~Use at an assay dependent concentration.

Format

Purified polyclonal antibody supplied in PBS with 0.09% (W/V) sodium azide. This antibody is purified through a protein A column, followed by peptide affinity purification.

Storage

Maintain refrigerated at 2-8°C for up to 2 weeks. For long term storage store at -20°C in small aliquots to prevent freeze-thaw cycles.

Precautions

TIMP4 Antibody (Center) is for research use only and not for use in diagnostic or therapeutic procedures.

TIMP4 Antibody (Center) - Protein Information

Name TIMP4

Function Complexes with metalloproteinases (such as collagenases) and irreversibly inactivates them by binding to their catalytic zinc cofactor. Known to act on MMP-1, MMP-2, MMP-3, MMP-7 and MMP-9.

Cellular Location
Secreted.

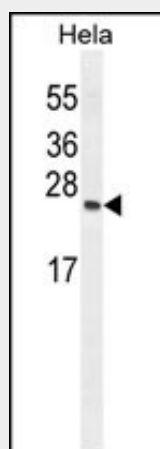
Tissue Location
Abundant in heart and present at low levels in many other tissues

TIMP4 Antibody (Center) - Protocols

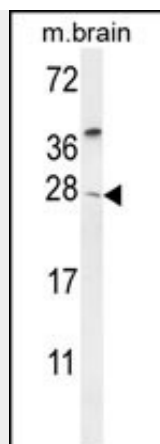
Provided below are standard protocols that you may find useful for product applications.

- [Western Blot](#)
- [Blocking Peptides](#)
- [Dot Blot](#)
- [Immunohistochemistry](#)
- [Immunofluorescence](#)
- [Immunoprecipitation](#)
- [Flow Cytometry](#)
- [Cell Culture](#)

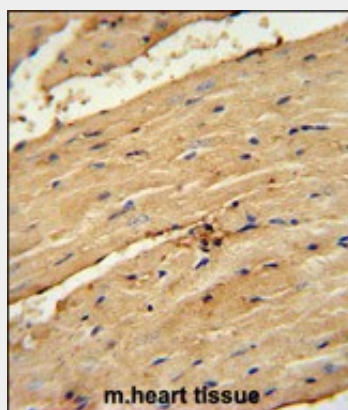
TIMP4 Antibody (Center) - Images



TIMP4 Antibody (Center) (Cat. #AP10148c) western blot analysis in HeLa cell line lysates (35ug/lane). This demonstrates the TIMP4 antibody detected the TIMP4 protein (arrow).



TIMP4 Antibody (Center) (Cat. #AP10148c) western blot analysis in mouse brain tissue lysates (35ug/lane). This demonstrates the TIMP4 antibody detected the TIMP4 protein (arrow).



TIMP4 Antibody (Center) (Cat. #AP10148c) immunohistochemistry analysis in formalin fixed and paraffin embedded mouse heart tissue followed by peroxidase conjugation of the secondary antibody and DAB staining. This data demonstrates the use of the TIMP4 Antibody (Center) for immunohistochemistry. Clinical relevance has not been evaluated.

TIMP4 Antibody (Center) - Background

This gene belongs to the TIMP gene family. The proteins encoded by this gene family are inhibitors of the matrix metalloproteinases, a group of peptidases involved in degradation of the extracellular matrix. The secreted, netrin domain-containing protein encoded by this gene is involved in regulation of platelet aggregation and recruitment and may play role in hormonal regulation and endometrial tissue remodeling.

TIMP4 Antibody (Center) - References

Nalpas, B., et al. Gut 59(8):1120-1126(2010)
Bailey, S.D., et al. Diabetes Care (2010) In press :
Wojciechowski, R., et al. Invest. Ophthalmol. Vis. Sci. (2010) In press :
Talmud, P.J., et al. Am. J. Hum. Genet. 85(5):628-642(2009)
Liss, M., et al. Am. J. Pathol. 175(3):940-946(2009)