

**PP1R14C Antibody (C-term)**  
**Affinity Purified Rabbit Polyclonal Antibody (Pab)**  
**Catalog # AP10151b**

**Specification**

---

**PP1R14C Antibody (C-term) - Product Information**

Application	IHC-P, WB,E
Primary Accession	<a href="#">Q8TAE6</a>
Other Accession	<a href="#">NP_112211.1</a>
Reactivity	Human, Mouse
Host	Rabbit
Clonality	Polyclonal
Isotype	Rabbit IgG
Calculated MW	17843
Antigen Region	126-155

**PP1R14C Antibody (C-term) - Additional Information**

**Gene ID** 81706

**Other Names**

Protein phosphatase 1 regulatory subunit 14C, Kinase-enhanced PP1 inhibitor, PKC-potentiated PP1 inhibitory protein, Serologically defined breast cancer antigen NY-BR-81, PPP1R14C, KEPI

**Target/Specificity**

This PP1R14C antibody is generated from rabbits immunized with a KLH conjugated synthetic peptide between 126-155 amino acids from the C-terminal region of human PP1R14C.

**Dilution**

IHC-P~~1:50~100

WB~~1:1000

E~~Use at an assay dependent concentration.

**Format**

Purified polyclonal antibody supplied in PBS with 0.09% (W/V) sodium azide. This antibody is purified through a protein A column, followed by peptide affinity purification.

**Storage**

Maintain refrigerated at 2-8°C for up to 2 weeks. For long term storage store at -20°C in small aliquots to prevent freeze-thaw cycles.

**Precautions**

PP1R14C Antibody (C-term) is for research use only and not for use in diagnostic or therapeutic procedures.

**PP1R14C Antibody (C-term) - Protein Information**

**Name** PPP1R14C

**Synonyms** KEPI**Function** Inhibitor of the PP1 regulatory subunit PPP1CA.**Cellular Location**

Cytoplasm. Membrane; Peripheral membrane protein

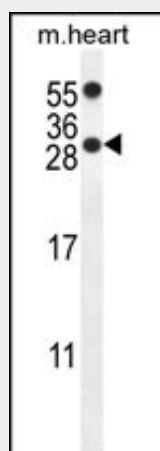
**Tissue Location**

Detected in breast cancer.

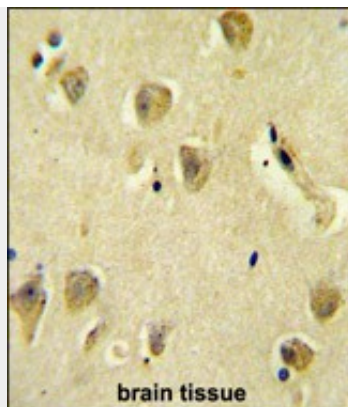
**PP1R14C Antibody (C-term) - Protocols**

Provided below are standard protocols that you may find useful for product applications.

- [Western Blot](#)
- [Blocking Peptides](#)
- [Dot Blot](#)
- [Immunohistochemistry](#)
- [Immunofluorescence](#)
- [Immunoprecipitation](#)
- [Flow Cytometry](#)
- [Cell Culture](#)

**PP1R14C Antibody (C-term) - Images**

PP1R14C Antibody (C-term) (Cat. #AP10151b) western blot analysis in mouse heart tissue lysates (35ug/lane). This demonstrates the PP1R14C antibody detected the PP1R14C protein (arrow).



PP1R14C Antibody (C-term) (Cat. #AP10151b) immunohistochemistry analysis in formalin fixed and paraffin embedded human brain tissue followed by peroxidase conjugation of the secondary antibody and DAB staining. This data demonstrates the use of the PP1R14C Antibody (C-term) for immunohistochemistry. Clinical relevance has not been evaluated.

#### **PP1R14C Antibody (C-term) - Background**

The degree of protein phosphorylation is regulated by a balance of protein kinase and phosphatase activities. Protein phosphatase-1 (PP1; see MIM 176875) is a signal-transducing phosphatase that influences neuronal activity, protein synthesis, metabolism, muscle contraction, and cell division. PPP1R14C is an inhibitor of PP1 (Liu et al., 2002 [PubMed 11812771]).[supplied by OMIM].

#### **PP1R14C Antibody (C-term) - References**

Daskalow, K., et al. Anticancer Res. 30(5):1573-1578(2010)  
Scholz, S.W., et al. Ann. Neurol. 65(5):610-614(2009)  
Burgner, D., et al. PLoS Genet. 5 (1), E1000319 (2009) :  
Mungall, A.J., et al. Nature 425(6960):805-811(2003)  
Liu, Q.R., et al. J. Biol. Chem. 277(15):13312-13320(2002)

#### **PP1R14C Antibody (C-term) - Citations**

- [Retromer in Osteoblasts Interacts With Protein Phosphatase 1 Regulator Subunit 14C. Terminates Parathyroid Hormone's Signaling. and Promotes Its Catabolic Response.](#)