

UBA52 Antibody (C-Term)
Affinity Purified Rabbit Polyclonal Antibody (Pab)
Catalog # AP10176b**Specification**

UBA52 Antibody (C-Term) - Product Information

Application	FC, IHC-P, WB,E
Primary Accession	P62987
Other Accession	P62986 , P63053 , P62984 , P0C273 , P62985 , P63048 , NP_001029102.1 , NP_003324.1 , P0C276 , P0DXC2
Reactivity	Human
Predicted	Bovine, Chicken, Monkey, Mouse, Pig, Rabbit, Rat, Sheep
Host	Rabbit
Clonality	Polyclonal
Isotype	Rabbit IgG
Calculated MW	14728
Antigen Region	100-128

UBA52 Antibody (C-Term) - Additional Information**Gene ID** 7311**Other Names**

Ubiquitin-60S ribosomal protein L40, CEP52, Ubiquitin A-52 residue ribosomal protein fusion product 1, Ubiquitin, 60S ribosomal protein L40, UBA52, UBCEP2

Target/Specificity

This UBA52 antibody is generated from rabbits immunized with a KLH conjugated synthetic peptide between 100-128 amino acids from the C-terminal region of human UBA52.

Dilution

FC~~1:10~50

IHC-P~~1:50~100

WB~~1:1000

E~~Use at an assay dependent concentration.

Format

Purified polyclonal antibody supplied in PBS with 0.09% (W/V) sodium azide. This antibody is purified through a protein A column, followed by peptide affinity purification.

Storage

Maintain refrigerated at 2-8°C for up to 2 weeks. For long term storage store at -20°C in small aliquots to prevent freeze-thaw cycles.

Precautions

UBA52 Antibody (C-Term) is for research use only and not for use in diagnostic or therapeutic procedures.

UBA52 Antibody (C-Term) - Protein Information

Name UBA52

Synonyms UBCEP2

Function [Ubiquitin]: Exists either covalently attached to another protein, or free (unanchored). When covalently bound, it is conjugated to target proteins via an isopeptide bond either as a monomer (monoubiquitin), a polymer linked via different Lys residues of the ubiquitin (polyubiquitin chains) or a linear polymer linked via the initiator Met of the ubiquitin (linear polyubiquitin chains). Polyubiquitin chains, when attached to a target protein, have different functions depending on the Lys residue of the ubiquitin that is linked: Lys-6-linked may be involved in DNA repair; Lys-11-linked is involved in ERAD (endoplasmic reticulum-associated degradation) and in cell- cycle regulation; Lys-29-linked is involved in proteotoxic stress response and cell cycle; Lys-33-linked is involved in kinase modification; Lys-48-linked is involved in protein degradation via the proteasome; Lys-63-linked is involved in endocytosis, DNA-damage responses as well as in signaling processes leading to activation of the transcription factor NF-kappa-B. Linear polymer chains formed via attachment by the initiator Met lead to cell signaling. Ubiquitin is usually conjugated to Lys residues of target proteins, however, in rare cases, conjugation to Cys or Ser residues has been observed. When polyubiquitin is free (unanchored-polyubiquitin), it also has distinct roles, such as in activation of protein kinases, and in signaling.

Cellular Location

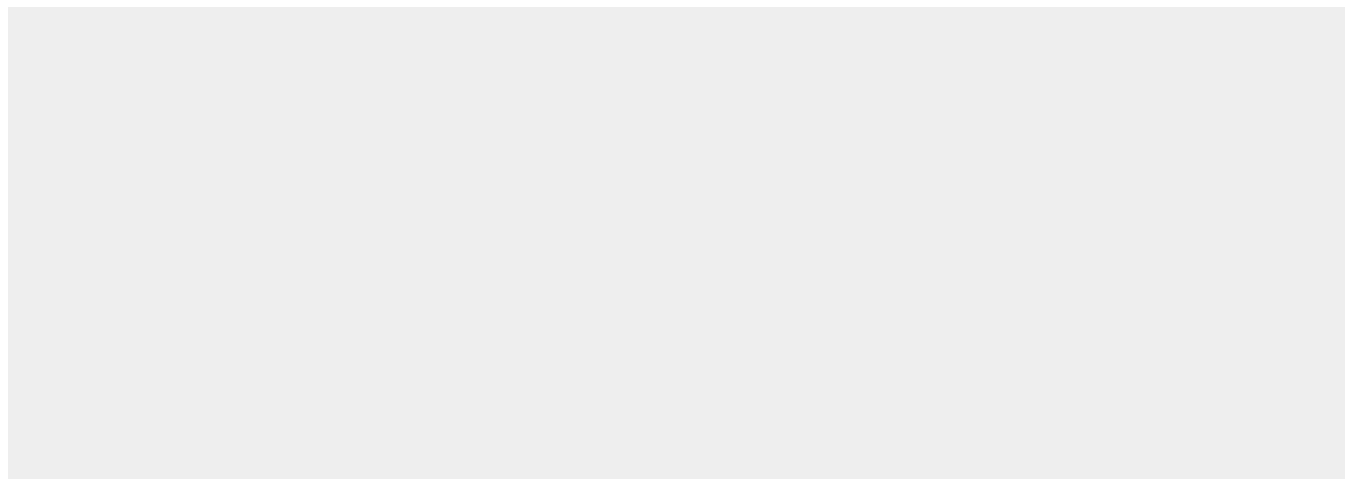
[Ubiquitin]: Cytoplasm. Nucleus

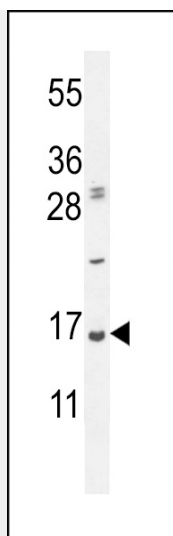
UBA52 Antibody (C-Term) - Protocols

Provided below are standard protocols that you may find useful for product applications.

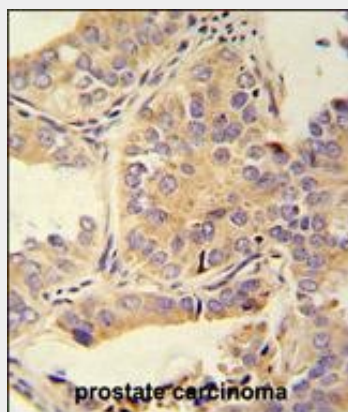
- [Western Blot](#)
- [Blocking Peptides](#)
- [Dot Blot](#)
- [Immunohistochemistry](#)
- [Immunofluorescence](#)
- [Immunoprecipitation](#)
- [Flow Cytometry](#)
- [Cell Culture](#)

UBA52 Antibody (C-Term) - Images

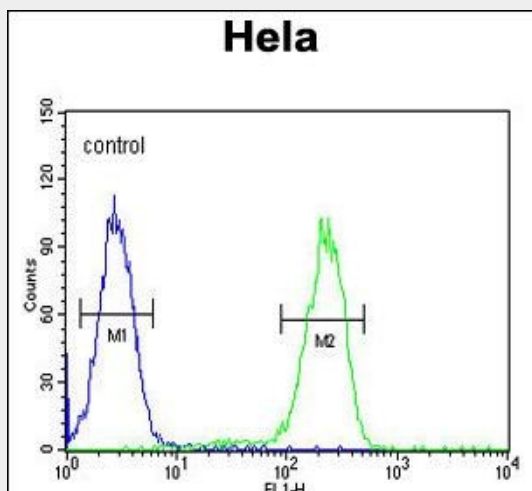




UBA52 Antibody (C-Term) (Cat. #AP10176b) western blot analysis in HeLa cell line lysates (35ug/lane). This demonstrates the UBA52 antibody detected the UBA52 protein (arrow).



UBA52 antibody (C-Term) (Cat. #AP10176b) immunohistochemistry analysis in formalin fixed and paraffin embedded human prostate carcinoma followed by peroxidase conjugation of the secondary antibody and DAB staining. This data demonstrates the use of the UBA52 antibody (C-Term) for immunohistochemistry. Clinical relevance has not been evaluated.



UBA52 Antibody (C-Term) (Cat. #AP10176b) flow cytometric analysis of HeLa cells (right histogram) compared to a negative control cell (left histogram). FITC-conjugated goat-anti-rabbit secondary antibodies were used for the analysis.

UBA52 Antibody (C-Term) - Background

Ubiquitin is a highly conserved nuclear and cytoplasmic protein that has a major role in targeting cellular proteins for degradation by the 26S proteasome. It is also involved in the maintenance of chromatin structure, the regulation of gene expression, and the stress response. Ubiquitin is synthesized as a precursor protein consisting of either polyubiquitin chains or a single ubiquitin moiety fused to an unrelated protein. This gene encodes a fusion protein consisting of ubiquitin at the N terminus and ribosomal protein L40 at the C terminus, a C-terminal extension protein (CEP). Multiple processed pseudogenes derived from this gene are present in the genome.

UBA52 Antibody (C-Term) - References

Memet, S. Biochem. Pharmacol. 72(9):1180-1195(2006)
Wang, A.G., et al. Biochem. Biophys. Res. Commun. 345(3):1022-1032(2006)
Foster, L.J., et al. J. Proteome Res. 5(1):64-75(2006)
Hu, Y., et al. Mol. Cell Proteomics 4(12):2000-2009(2005)
Westhoff, B., et al. Curr. Biol. 15(11):1058-1064(2005)