

**PROC Antibody**  
**Purified Rabbit Polyclonal Antibody (Pab)**  
**Catalog # AP1017a**

**Specification**

---

**PROC Antibody - Product Information**

Application	WB,E
Primary Accession	<a href="#">P04070</a>
Reactivity	Human
Predicted	Human
Host	Rabbit
Clonality	Polyclonal
Isotype	Rabbit IgG

**PROC Antibody - Additional Information**

**Gene ID** 5624

**Other Names**

Vitamin K-dependent protein C, Anticoagulant protein C, Autoprothrombin IIA, Blood coagulation factor XIV, Vitamin K-dependent protein C light chain, Vitamin K-dependent protein C heavy chain, Activation peptide, PROC

**Target/Specificity**

KLH conjugated synthetic peptide encoding the Protein-C epitope tag (CEDQVDPRLIDGK) was used as antigen.

**Dilution**

WB~~1:1000

E~~Use at an assay dependent concentration.

**Format**

Purified polyclonal antibody supplied in PBS with 0.09% (W/V) sodium azide. This antibody is prepared by Saturated Ammonium Sulfate (SAS) precipitation followed by dialysis against PBS.

**Storage**

Maintain refrigerated at 2-8°C for up to 2 weeks. For long term storage store at -20°C in small aliquots to prevent freeze-thaw cycles.

**Precautions**

PROC Antibody is for research use only and not for use in diagnostic or therapeutic procedures.

**PROC Antibody - Protein Information**

**Name** PROC

**Function** Protein C is a vitamin K-dependent serine protease that regulates blood coagulation by inactivating factors Va and VIIIa in the presence of calcium ions and phospholipids

(PubMed:[25618265](#)). Exerts a protective effect on the endothelial cell barrier function  
(PubMed:[25651845](#)).

**Cellular Location**

Secreted. Golgi apparatus Endoplasmic reticulum

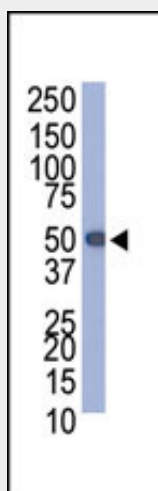
**Tissue Location**

Plasma; synthesized in the liver.

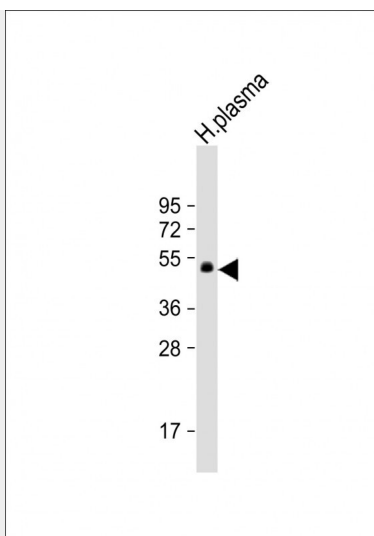
**PROC Antibody - Protocols**

Provided below are standard protocols that you may find useful for product applications.

- [Western Blot](#)
- [Blocking Peptides](#)
- [Dot Blot](#)
- [Immunohistochemistry](#)
- [Immunofluorescence](#)
- [Immunoprecipitation](#)
- [Flow Cytometry](#)
- [Cell Culture](#)

**PROC Antibody - Images**

Western blot analysis of anti-Protein-C tag Pab (Cat. #AP1017a) in Protein-C-tagged recombinant protein bacterial lysate.



Anti-PROC Antibody at 1:1000 dilution + H.plasma whole cell lysate Lysates/proteins at 20 µg per lane. Secondary Goat Anti-Rabbit IgG, (H+L), Peroxidase conjugated at 1/10000 dilution. Predicted band size : 52 kDa Blocking/Dilution buffer: 5% NFDM/TBST.

#### **PROC Antibody - Background**

Epitope tags consisting of short sequences recognized by well-characterized antibodies have been widely used in the study of protein expression in various systems. The epitope tag composed of a 12 residue peptide, EDQVDPRLIDGK, is derived from Protein-C, a vitamin K-dependent serine protease that regulates blood coagulation by inactivating factors Va and VIIIa in the presence of calcium ions and phospholipids.

Abgent's anti-Protein-C polyclonal antibody provides a simple solution to detect the expression of a Protein-C epitope-tagged protein in cells.

#### **PROC Antibody - References**

Lichty JJ, Malecki JL, Agnew HD, Michelson-Horowitz DJ, Tan S. Comparison of affinity tags for protein purification. Protein Expr Purif. 2005 May;41(1):98-105.