

**G0S2 Antibody (Center)**  
**Affinity Purified Rabbit Polyclonal Antibody (Pab)**  
**Catalog # AP10188c**

**Specification**

---

**G0S2 Antibody (Center) - Product Information**

Application	WB, IHC-P,E
Primary Accession	<a href="#">P27469</a>
Other Accession	<a href="#">NP_056529.1</a>
Reactivity	Human, Mouse
Host	Rabbit
Clonality	Polyclonal
Isotype	Rabbit IgG
Calculated MW	11321
Antigen Region	36-62

**G0S2 Antibody (Center) - Additional Information**

**Gene ID** 50486

**Other Names**

G0/G1 switch protein 2, G0/G1 switch regulatory protein 2, Putative lymphocyte G0/G1 switch gene, G0S2

**Target/Specificity**

This G0S2 antibody is generated from rabbits immunized with a KLH conjugated synthetic peptide between 36-62 amino acids from the Central region of human G0S2.

**Dilution**

WB~~1:1000  
IHC-P~~1:50~100

**Format**

Purified polyclonal antibody supplied in PBS with 0.09% (W/V) sodium azide. This antibody is purified through a protein A column, followed by peptide affinity purification.

**Storage**

Maintain refrigerated at 2-8°C for up to 2 weeks. For long term storage store at -20°C in small aliquots to prevent freeze-thaw cycles.

**Precautions**

G0S2 Antibody (Center) is for research use only and not for use in diagnostic or therapeutic procedures.

**G0S2 Antibody (Center) - Protein Information**

**Name** G0S2

**Function** Promotes apoptosis by binding to BCL2, hence preventing the formation of protective BCL2-BAX heterodimers.

**Cellular Location**

Mitochondrion.

**Tissue Location**

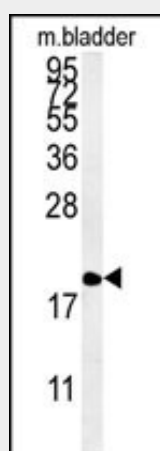
Widely expressed with highest levels in peripheral blood, skeletal muscle and heart, followed by kidney and liver

**G0S2 Antibody (Center) - Protocols**

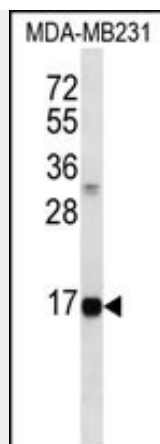
Provided below are standard protocols that you may find useful for product applications.

- [Western Blot](#)
- [Blocking Peptides](#)
- [Dot Blot](#)
- [Immunohistochemistry](#)
- [Immunofluorescence](#)
- [Immunoprecipitation](#)
- [Flow Cytometry](#)
- [Cell Culture](#)

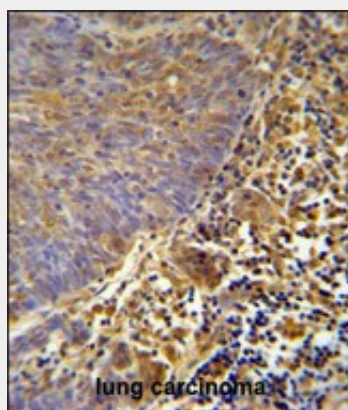
**G0S2 Antibody (Center) - Images**



G0S2 Antibody (Center) (Cat. #AP10188c) western blot analysis in mouse bladder tissue lysates (15ug/lane). This demonstrates the G0S2 antibody detected G0S2 protein (arrow).



G0S2 Antibody (Center) (Cat. #AP10188c) western blot analysis in MDA-MB231 cell line lysates (35ug/lane). This demonstrates the G0S2 antibody detected the G0S2 protein (arrow).



G0S2 antibody (Center) (Cat. #AP10188c) immunohistochemistry analysis in formalin fixed and paraffin embedded human lung carcinoma followed by peroxidase conjugation of the secondary antibody and DAB staining. This data demonstrates the use of the G0S2 antibody (Center) for immunohistochemistry. Clinical relevance has not been evaluated.

#### **G0S2 Antibody (Center) - References**

- Kusakabe, M., et al. Int. J. Cancer 126(8):1895-1902(2010)
- Kusakabe, M., et al. Biochem. Biophys. Res. Commun. 390(4):1283-1287(2009)
- Welch, C., et al. Cancer Res. 69(17):6782-6789(2009)
- Kitareewan, S., et al. Int. J. Oncol. 33(2):397-404(2008)
- Zandbergen, F., et al. Biochem. J. 392 (PT 2), 313-324 (2005) :