

EXOC8 Antibody (Center)
Affinity Purified Rabbit Polyclonal Antibody (Pab)
Catalog # AP10202c**Specification**

EXOC8 Antibody (Center) - Product Information

Application	WB,E
Primary Accession	Q8IYI6
Other Accession	NP_787072.2
Reactivity	Human, Mouse
Host	Rabbit
Clonality	Polyclonal
Isotype	Rabbit IgG
Calculated MW	81799
Antigen Region	360-389

EXOC8 Antibody (Center) - Additional Information**Gene ID** 149371**Other Names**

Exocyst complex component 8, Exocyst complex 84 kDa subunit, EXOC8

Target/Specificity

This EXOC8 antibody is generated from rabbits immunized with a KLH conjugated synthetic peptide between 360-389 amino acids from the Central region of human EXOC8.

Dilution

WB~~1:1000

E~~Use at an assay dependent concentration.

Format

Purified polyclonal antibody supplied in PBS with 0.09% (W/V) sodium azide. This antibody is purified through a protein A column, followed by peptide affinity purification.

Storage

Maintain refrigerated at 2-8°C for up to 2 weeks. For long term storage store at -20°C in small aliquots to prevent freeze-thaw cycles.

Precautions

EXOC8 Antibody (Center) is for research use only and not for use in diagnostic or therapeutic procedures.

EXOC8 Antibody (Center) - Protein Information**Name** EXOC8**Function** Component of the exocyst complex involved in the docking of exocytic vesicles with

fusion sites on the plasma membrane.

Cellular Location

Cytoplasm {ECO:0000250|UniProtKB:O54924}. Cytoplasm, perinuclear region

{ECO:0000250|UniProtKB:O54924}. Cell projection, growth cone

{ECO:0000250|UniProtKB:O54924}. Cell projection {ECO:0000250|UniProtKB:O54924}.

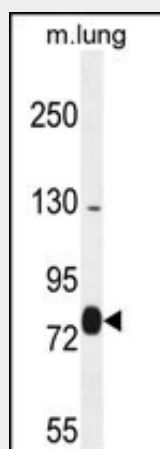
Note=Perinuclear in undifferentiated PC12 cells. Redistributes to growing neurites and growth cones during neuronal differentiation (By similarity). Binds lipids with phosphatidylinositol 3,4,5-trisphosphate groups (By similarity) Localizes at the leading edge of migrating cells (By similarity) {ECO:0000250, ECO:0000250|UniProtKB:O54924}

EXOC8 Antibody (Center) - Protocols

Provided below are standard protocols that you may find useful for product applications.

- [Western Blot](#)
- [Blocking Peptides](#)
- [Dot Blot](#)
- [Immunohistochemistry](#)
- [Immunofluorescence](#)
- [Immunoprecipitation](#)
- [Flow Cytometry](#)
- [Cell Culture](#)

EXOC8 Antibody (Center) - Images



EXOC8 Antibody (Center) (Cat. #AP10202c) western blot analysis in mouse lung tissue lysates (35ug/lane). This demonstrates the EXOC8 antibody detected the EXOC8 protein (arrow).

EXOC8 Antibody (Center) - References

- Issaq, S.H., et al. Mol. Cancer Res. 8(2):223-231(2010)
Moskalenko, S., et al. J. Biol. Chem. 278(51):51743-51748(2003)
Wang, S., et al. Hybrid. Hybridomics 22(3):159-164(2003)
Inoue, M., et al. Nature 422(6932):629-633(2003)
Brymora, A., et al. J. Biol. Chem. 276(32):29792-29797(2001)