

FBXO2 Antibody (C-term)
Affinity Purified Rabbit Polyclonal Antibody (Pab)
Catalog # AP10212b**Specification**

FBXO2 Antibody (C-term) - Product Information

Application	WB, FC,E
Primary Accession	Q9UK22
Other Accession	Q80UW2 , NP_036300.2
Reactivity	Human, Mouse
Host	Rabbit
Clonality	Polyclonal
Isotype	Rabbit IgG
Calculated MW	33328
Antigen Region	244-271

FBXO2 Antibody (C-term) - Additional Information**Gene ID** 26232**Other Names**

F-box only protein 2, FBXO2, FBX2

Target/Specificity

This FBXO2 antibody is generated from rabbits immunized with a KLH conjugated synthetic peptide between 244-271 amino acids from the C-terminal region of human FBXO2.

Dilution

WB~~1:1000

FC~~1:10~50

E~~Use at an assay dependent concentration.

Format

Purified polyclonal antibody supplied in PBS with 0.09% (W/V) sodium azide. This antibody is purified through a protein A column, followed by peptide affinity purification.

Storage

Maintain refrigerated at 2-8°C for up to 2 weeks. For long term storage store at -20°C in small aliquots to prevent freeze-thaw cycles.

Precautions

FBXO2 Antibody (C-term) is for research use only and not for use in diagnostic or therapeutic procedures.

FBXO2 Antibody (C-term) - Protein Information**Name** FBXO2

Synonyms FBX2

Function Substrate recognition component of a SCF (SKP1-CUL1-F-box protein) E3 ubiquitin-protein ligase complex that mediates the ubiquitination and subsequent proteasomal degradation of target proteins. Involved in the endoplasmic reticulum-associated degradation pathway (ERAD) for misfolded luminal proteins by recognizing and binding sugar chains on unfolded glycoproteins that are retrotranslocated into the cytosol and promoting their ubiquitination and subsequent degradation. Prevents formation of cytosolic aggregates of unfolded glycoproteins that have been retrotranslocated into the cytosol. Able to recognize and bind denatured glycoproteins, preferentially those of the high-mannose type (By similarity).

Cellular Location

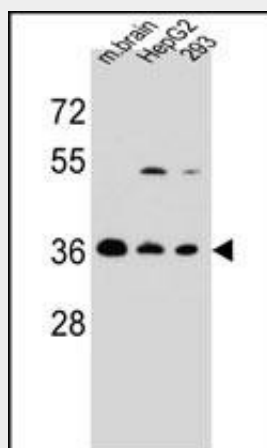
Cytoplasm. Microsome membrane; Peripheral membrane protein; Cytoplasmic side

FBX02 Antibody (C-term) - Protocols

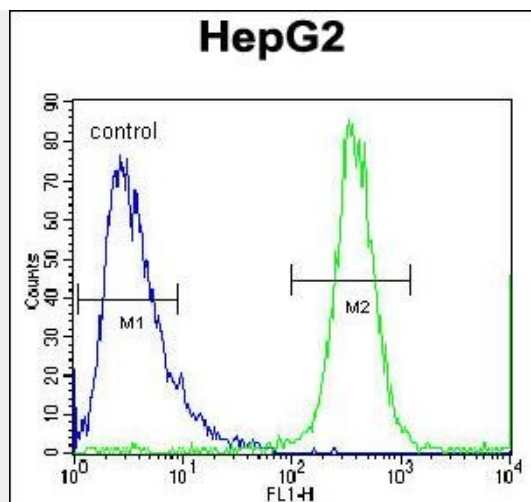
Provided below are standard protocols that you may find useful for product applications.

- [Western Blot](#)
- [Blocking Peptides](#)
- [Dot Blot](#)
- [Immunohistochemistry](#)
- [Immunofluorescence](#)
- [Immunoprecipitation](#)
- [Flow Cytometry](#)
- [Cell Culture](#)

FBX02 Antibody (C-term) - Images



FBX02 Antibody (C-term) (Cat. #AP10212b) western blot analysis in mouse brain tissue and HepG2,293 cell line lysates (35ug/lane). This demonstrates the FBX02 antibody detected the FBX02 protein (arrow).



FBXO2 Antibody (C-term) (Cat. #AP10212b) flow cytometric analysis of HepG2 cells (right histogram) compared to a negative control cell (left histogram). FITC-conjugated goat-anti-rabbit secondary antibodies were used for the analysis.

FBXO2 Antibody (C-term) - Background

This gene encodes a member of the F-box protein family which is characterized by an approximately 40 amino acid motif, the F-box. The F-box proteins constitute one of the four subunits of the ubiquitin protein ligase complex called SCFs (SKP1-cullin-F-box), which function in phosphorylation-dependent ubiquitination. The F-box proteins are divided into 3 classes: Fbws containing WD-40 domains, Fbls containing leucine-rich repeats, and Fbxs containing either different protein-protein interaction modules or no recognizable motifs. The protein encoded by this gene belongs to the Fbxs class. This protein is highly similar to the rat NFB42 (neural F Box 42 kDa) protein which is enriched in the nervous system and may play a role in maintaining neurons in a postmitotic state.

FBXO2 Antibody (C-term) - References

Eom, C.Y., et al. Proc. Natl. Acad. Sci. U.S.A. 100(17):9803-9807(2003) Ilyin, G.P., et al. Gene 296 (1-2), 11-20 (2002) : Yoshida, Y., et al. Nature 418(6896):438-442(2002) Winston, J.T., et al. Curr. Biol. 9(20):1180-1182(1999) Cenciarelli, C., et al. Curr. Biol. 9(20):1177-1179(1999)