

GTPBP2 Antibody (C-term)
Affinity Purified Rabbit Polyclonal Antibody (Pab)
Catalog # AP10220b**Specification**

GTPBP2 Antibody (C-term) - Product Information

Application	FC, IHC-P, WB,E
Primary Accession	Q9BX10
Other Accession	Q3UJK4 , NP_061969.3
Reactivity	Human, Hamster, Mouse
Host	Rabbit
Clonality	Polyclonal
Isotype	Rabbit IgG
Calculated MW	65768
Antigen Region	536-564

GTPBP2 Antibody (C-term) - Additional Information**Gene ID** 54676**Other Names**

GTP-binding protein 2, GTPBP2 {ECO:0000312|EMBL:CAC362691}

Target/Specificity

This GTPBP2 antibody is generated from rabbits immunized with a KLH conjugated synthetic peptide between 536-564 amino acids from the C-terminal region of human GTPBP2.

Dilution

FC~~1:10~50

IHC-P~~1:50~100

WB~~1:1000

E~~Use at an assay dependent concentration.

Format

Purified polyclonal antibody supplied in PBS with 0.09% (W/V) sodium azide. This antibody is purified through a protein A column, followed by peptide affinity purification.

Storage

Maintain refrigerated at 2-8°C for up to 2 weeks. For long term storage store at -20°C in small aliquots to prevent freeze-thaw cycles.

Precautions

GTPBP2 Antibody (C-term) is for research use only and not for use in diagnostic or therapeutic procedures.

GTPBP2 Antibody (C-term) - Protein Information**Name** GTPBP2 {ECO:0000312|EMBL:CAC36269.1}

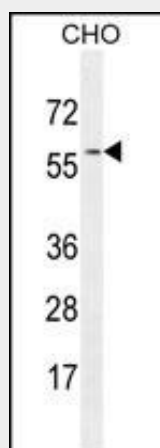
Tissue Location

Predominantly expressed in thymus, spleen, and testis. Expressed at lower levels in brain, lung, kidney, and ovary

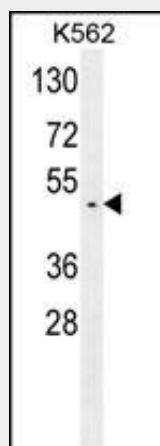
GTPBP2 Antibody (C-term) - Protocols

Provided below are standard protocols that you may find useful for product applications.

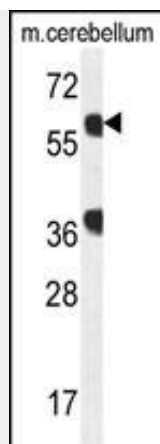
- [Western Blot](#)
- [Blocking Peptides](#)
- [Dot Blot](#)
- [Immunohistochemistry](#)
- [Immunofluorescence](#)
- [Immunoprecipitation](#)
- [Flow Cytometry](#)
- [Cell Culture](#)

GTPBP2 Antibody (C-term) - Images

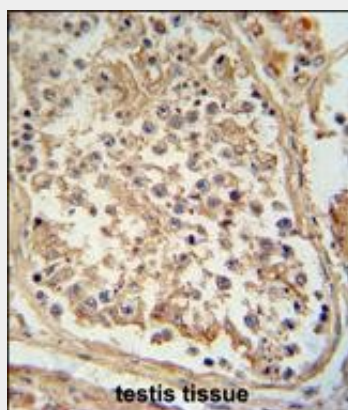
GTPBP2 Antibody (C-term) (Cat. #AP10220b) western blot analysis in CHO cell line lysates (35ug/lane). This demonstrates the GTPBP2 antibody detected the GTPBP2 protein (arrow).



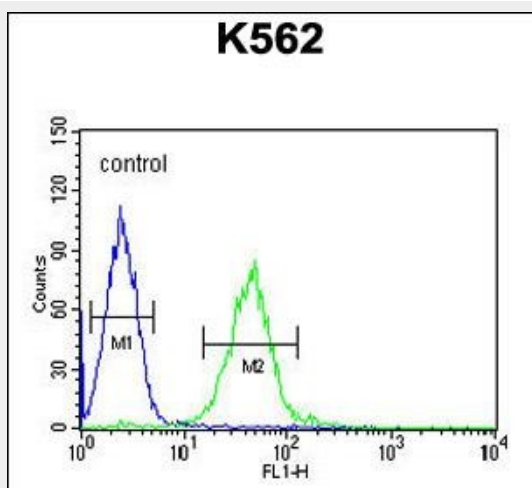
GTPBP2 Antibody (C-term) (Cat. #AP10220b) western blot analysis in K562 cell line lysates (35ug/lane). This demonstrates the GTPBP2 antibody detected the GTPBP2 protein (arrow).



GTPBP2 Antibody (C-term) (Cat. #AP10220b) western blot analysis in mouse cerebellum tissue lysates (35ug/lane). This demonstrates the GTPBP2 antibody detected the GTPBP2 protein (arrow).



GTPBP2 antibody (C-term) (Cat. #AP10220b) immunohistochemistry analysis in formalin fixed and paraffin embedded human testis tissue followed by peroxidase conjugation of the secondary antibody and DAB staining. This data demonstrates the use of the GTPBP2 antibody (C-term) for immunohistochemistry. Clinical relevance has not been evaluated.



GTPBP2 Antibody (C-term) (Cat. #AP10220b) flow cytometric analysis of K562 cells (right histogram) compared to a negative control cell (left histogram). FITC-conjugated goat-anti-rabbit secondary antibodies were used for the analysis.

GTPBP2 Antibody (C-term) - Background

GTP-binding proteins, or G proteins, constitute a superfamily capable of binding GTP or GDP. G proteins are activated by binding GTP and are inactivated by hydrolyzing GTP to GDP. This general mechanism enables G proteins to perform a wide range of biologic activities.

GTPBP2 Antibody (C-term) - References

Mungall, A.J., et al. Nature 425(6960):805-811(2003)
Watanabe, M., et al. Gene 256 (1-2), 51-58 (2000) :
Kudo, H., et al. Biochem. Biophys. Res. Commun. 272(2):456-465(2000)