

**CLDN22 Antibody (Center)**  
**Affinity Purified Rabbit Polyclonal Antibody (Pab)**  
**Catalog # AP10232c**

**Specification**

---

**CLDN22 Antibody (Center) - Product Information**

Application	FC, WB,E
Primary Accession	<a href="#">Q8N7P3</a>
Other Accession	<a href="#">A6NM45</a> , <a href="#">NP_001104789.1</a>
Reactivity	Human, Mouse
Host	Rabbit
Clonality	Polyclonal
Isotype	Rabbit IgG
Antigen Region	90-117

**CLDN22 Antibody (Center) - Additional Information**

**Gene ID** 53842

**Other Names**  
Claudin-22, CLDN22

**Target/Specificity**

This CLDN22 antibody is generated from rabbits immunized with a KLH conjugated synthetic peptide between 90-117 amino acids of human CLDN22.

**Dilution**

FC~~1:10~50  
WB~~1:1000  
E~~Use at an assay dependent concentration.

**Format**

Purified polyclonal antibody supplied in PBS with 0.09% (W/V) sodium azide. This antibody is purified through a protein A column, followed by peptide affinity purification.

**Storage**

Maintain refrigerated at 2-8°C for up to 2 weeks. For long term storage store at -20°C in small aliquots to prevent freeze-thaw cycles.

**Precautions**

CLDN22 Antibody (Center) is for research use only and not for use in diagnostic or therapeutic procedures.

**CLDN22 Antibody (Center) - Protein Information**

**Name** CLDN22

**Function** Plays a major role in tight junction-specific obliteration of the intercellular space,

through calcium-independent cell-adhesion activity.

#### Cellular Location

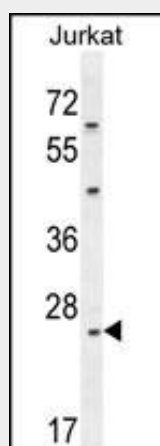
Cell junction, tight junction. Cell membrane; Multi-pass membrane protein

### CLDN22 Antibody (Center) - Protocols

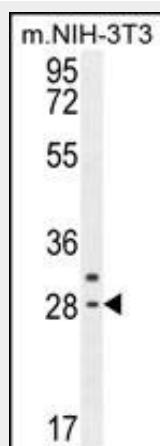
Provided below are standard protocols that you may find useful for product applications.

- [Western Blot](#)
- [Blocking Peptides](#)
- [Dot Blot](#)
- [Immunohistochemistry](#)
- [Immunofluorescence](#)
- [Immunoprecipitation](#)
- [Flow Cytometry](#)
- [Cell Culture](#)

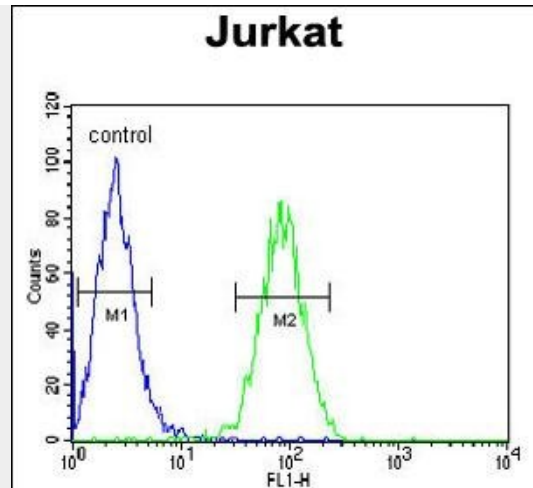
### CLDN22 Antibody (Center) - Images



CLDN22 Antibody (Center) (Cat. #AP10232c) western blot analysis in Jurkat cell line lysates (35ug/lane). This demonstrates the CLDN22 antibody detected the CLDN22 protein (arrow).



CLDN22 Antibody (Center) (Cat. #AP10232c) western blot analysis in mouse NIH-3T3 cell line lysates (35ug/lane). This demonstrates the CLDN22 antibody detected the CLDN22 protein (arrow).



CLDN22 Antibody (Center) (Cat. #AP10232c) flow cytometric analysis of Jurkat cells (right histogram) compared to a negative control (left histogram). FITC-conjugated goat-anti-rabbit secondary antibodies were used for the analysis.

### **CLDN22 Antibody (Center) - Background**

This gene encodes a member of the claudin family. Claudins are integral membrane proteins and components of tight junction strands. Tight junction strands serve as a physical barrier to prevent solutes and water from passing freely through the paracellular space between epithelial or endothelial cell sheets, and also play critical roles in maintaining cell polarity and signal transductions. This gene is intronless and overlaps the 3' UTR of the WWC2 gene (GeneID: 80014) on the opposite strand.

### **CLDN22 Antibody (Center) - References**

Lal-Nag, M., et al. *Genome Biol.* 10 (8), 235 (2009) :  
Krause, G., et al. *Biochim. Biophys. Acta* 1778(3):631-645(2008)  
Hillier, L.W., et al. *Nature* 434(7034):724-731(2005)  
Katoh, M., et al. *Int. J. Mol. Med.* 11(6):683-689(2003)  
Gonzalez-Mariscal, L., et al. *Prog. Biophys. Mol. Biol.* 81(1):1-44(2003)