

GAS2L1 Antibody (C-term)
Affinity Purified Rabbit Polyclonal Antibody (Pab)
Catalog # AP10234B**Specification**

GAS2L1 Antibody (C-term) - Product Information

Application	FC, WB,E
Primary Accession	O99501
Other Accession	O8JZP9 , NP_689422.1 , NP_689423.1 , NP_006469.2
Reactivity	Human
Predicted	Mouse
Host	Rabbit
Clonality	Polyclonal
Isotype	Rabbit IgG
Calculated MW	72717
Antigen Region	618-646

GAS2L1 Antibody (C-term) - Additional Information**Gene ID** 10634**Other Names**

GAS2-like protein 1, GAS2-related protein on chromosome 22, Growth arrest-specific protein 2-like 1, GAS2L1, GAR22

Target/Specificity

This GAS2L1 antibody is generated from rabbits immunized with a KLH conjugated synthetic peptide between 618-646 amino acids from the C-terminal region of human GAS2L1.

Dilution

FC~~1:10~50

WB~~1:1000

E~~Use at an assay dependent concentration.

Format

Purified polyclonal antibody supplied in PBS with 0.09% (W/V) sodium azide. This antibody is purified through a protein A column, followed by peptide affinity purification.

Storage

Maintain refrigerated at 2-8°C for up to 2 weeks. For long term storage store at -20°C in small aliquots to prevent freeze-thaw cycles.

Precautions

GAS2L1 Antibody (C-term) is for research use only and not for use in diagnostic or therapeutic procedures.

GAS2L1 Antibody (C-term) - Protein Information

Name GAS2L1

Synonyms GAR22

Function Involved in the cross-linking of microtubules and microfilaments (PubMed:[12584248](#), PubMed:[24706950](#)). Regulates microtubule dynamics and stability by interacting with microtubule plus-end tracking proteins, such as MAPRE1, to regulate microtubule growth along actin stress fibers (PubMed:[24706950](#)).

Cellular Location

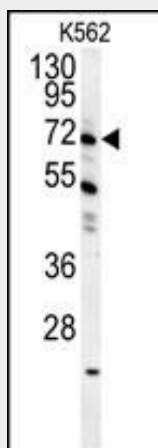
Cytoplasm, cytoskeleton. Cytoplasm, cytoskeleton, stress fiber. Note=Colocalizes with the tips of microtubule plus ends.

GAS2L1 Antibody (C-term) - Protocols

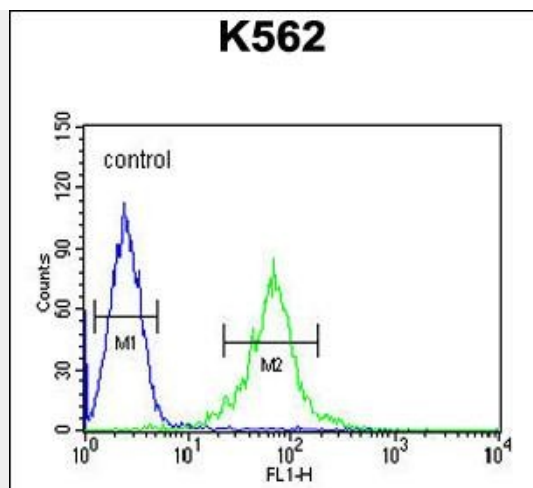
Provided below are standard protocols that you may find useful for product applications.

- [Western Blot](#)
- [Blocking Peptides](#)
- [Dot Blot](#)
- [Immunohistochemistry](#)
- [Immunofluorescence](#)
- [Immunoprecipitation](#)
- [Flow Cytometry](#)
- [Cell Culture](#)

GAS2L1 Antibody (C-term) - Images



GAS2L1 Antibody (C-term) (Cat. #AP10234b) western blot analysis in K562 cell line lysates (35ug/lane). This demonstrates the GAS2L1 antibody detected the GAS2L1 protein (arrow).



GAS2L1 Antibody (C-term) (Cat. #AP10234b) flow cytometric analysis of K562 cells (right histogram) compared to a negative control cell (left histogram). FITC-conjugated goat-anti-rabbit secondary antibodies were used for the analysis.

GAS2L1 Antibody (C-term) - Background

The protein encoded by this gene, a member of the GAS2 family, is similar in sequence to the mouse protein Gas2, an actin-associated protein expressed at high levels in growth-arrested cells. Expression of the mouse Gas2 gene is negatively regulated by serum and growth factors. Three transcript variants encoding two different isoforms have been found for this gene.

GAS2L1 Antibody (C-term) - References

Saito, A., et al. Psychiatry Res (2010) In press :
Gamper, I., et al. Exp. Hematol. 37(5):539-548(2009)
Olsen, J.V., et al. Cell 127(3):635-648(2006)
Olsen, J.V., et al. Cell 127(3):635-648(2006)
Goriounov, D., et al. J. Cell. Sci. 116 (PT 6), 1045-1058 (2003) :

GAS2L1 Antibody (C-term) - Citations

- [GAS2-like 1 coordinates cell division through its association with end-binding proteins.](#)