

**CALML4 Antibody (C-term)**  
**Affinity Purified Rabbit Polyclonal Antibody (Pab)**  
**Catalog # AP10243b**

**Specification**

---

**CALML4 Antibody (C-term) - Product Information**

Application	WB,E
Primary Accession	<a href="#">O96GE6</a>
Other Accession	<a href="#">NP_001026903.2</a> , <a href="#">NP_219501.2</a>
Reactivity	Human, Mouse
Host	Rabbit
Clonality	Polyclonal
Isotype	Rabbit IgG
Calculated MW	21883
Antigen Region	167-196

**CALML4 Antibody (C-term) - Additional Information**

**Gene ID** 91860

**Other Names**

Calmodulin-like protein 4, Serologically defined breast cancer antigen NY-BR-20, CALML4

**Target/Specificity**

This CALML4 antibody is generated from rabbits immunized with a KLH conjugated synthetic peptide between 167-196 amino acids from the C-terminal region of human CALML4.

**Dilution**

WB~~1:1000

**Format**

Purified polyclonal antibody supplied in PBS with 0.09% (W/V) sodium azide. This antibody is purified through a protein A column, followed by peptide affinity purification.

**Storage**

Maintain refrigerated at 2-8°C for up to 2 weeks. For long term storage store at -20°C in small aliquots to prevent freeze-thaw cycles.

**Precautions**

CALML4 Antibody (C-term) is for research use only and not for use in diagnostic or therapeutic procedures.

**CALML4 Antibody (C-term) - Protein Information**

**Name** CALML4 ([HGNC:18445](#))

**Function** As part of the intermicrovillar adhesion complex/IMAC plays a role in epithelial brush border differentiation, controlling microvilli organization and length. Acts as a light chain for

MYO7B and is required for efficient targeting of the IMAC to the tips of border brush microvilli.

**Cellular Location**

[Isoform 1]: Cell projection, microvillus. Note=Enriched at the distal tips of enterocyte microvilli.

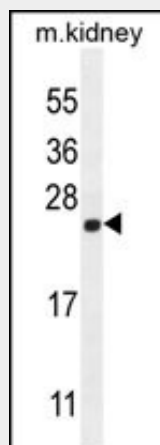
**Tissue Location**

[Isoform 1]: Expressed in the intestinal tract.

**CALML4 Antibody (C-term) - Protocols**

Provided below are standard protocols that you may find useful for product applications.

- [Western Blot](#)
- [Blocking Peptides](#)
- [Dot Blot](#)
- [Immunohistochemistry](#)
- [Immunofluorescence](#)
- [Immunoprecipitation](#)
- [Flow Cytometry](#)
- [Cell Culture](#)

**CALML4 Antibody (C-term) - Images**

CALML4 Antibody (C-term) (Cat. #AP10243b) western blot analysis in mouse kidney tissue lysates (35ug/lane). This demonstrates the CALML4 antibody detected the CALML4 protein (arrow).

**CALML4 Antibody (C-term) - References**

Scanlan, M.J., et al. Cancer Immun. 1, 4 (2001) :