

SLC10A4 Antibody (C-term)
Affinity Purified Rabbit Polyclonal Antibody (Pab)
Catalog # AP10250b

Specification

SLC10A4 Antibody (C-term) - Product Information

Application	WB,E
Primary Accession	Q96EP9
Other Accession	NP_689892.1
Reactivity	Human, Mouse
Host	Rabbit
Clonality	Polyclonal
Isotype	Rabbit IgG
Antigen Region	370-398

SLC10A4 Antibody (C-term) - Additional Information

Gene ID 201780

Other Names

Sodium/bile acid cotransporter 4, Na(+)/bile acid cotransporter 4, Solute carrier family 10 member 4, SLC10A4

Target/Specificity

This SLC10A4 antibody is generated from rabbits immunized with a KLH conjugated synthetic peptide between 370-398 amino acids from the C-terminal region of human SLC10A4.

Dilution

WB~~1:1000

E~~Use at an assay dependent concentration.

Format

Purified polyclonal antibody supplied in PBS with 0.09% (W/V) sodium azide. This antibody is purified through a protein A column, followed by peptide affinity purification.

Storage

Maintain refrigerated at 2-8°C for up to 2 weeks. For long term storage store at -20°C in small aliquots to prevent freeze-thaw cycles.

Precautions

SLC10A4 Antibody (C-term) is for research use only and not for use in diagnostic or therapeutic procedures.

SLC10A4 Antibody (C-term) - Protein Information

Name SLC10A4

Function Transporter for bile acids.

Cellular Location

Cell membrane; Multi-pass membrane protein

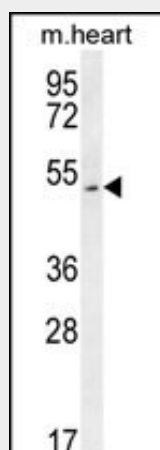
Tissue Location

Highly expressed in brain and small intestine, and moderately expressed in colon, heart, prostate, and testis. Very low levels were detected in kidney, liver, ovary, placenta, spleen, and thymus.

SLC10A4 Antibody (C-term) - Protocols

Provided below are standard protocols that you may find useful for product applications.

- [Western Blot](#)
- [Blocking Peptides](#)
- [Dot Blot](#)
- [Immunohistochemistry](#)
- [Immunofluorescence](#)
- [Immunoprecipitation](#)
- [Flow Cytometry](#)
- [Cell Culture](#)

SLC10A4 Antibody (C-term) - Images

SLC10A4 Antibody (C-term) (Cat. #AP10250b) western blot analysis in mouse heart tissue lysates (35ug/lane). This demonstrates the SLC10A4 antibody detected the SLC10A4 protein (arrow).

SLC10A4 Antibody (C-term) - References

Splinter, P.L., et al. World J. Gastroenterol. 12(42):6797-6805(2006)
Geyer, J., et al. Naunyn Schmiedeberg's Arch. Pharmacol. 372(6):413-431(2006)

SLC10A4 Antibody (C-term) - Citations

- [Expression, sorting and transport studies for the orphan carrier SLC10A4 in neuronal and non-neuronal cell lines and in Xenopus laevis oocytes.](#)