

L2HGDH Antibody (Center)
Affinity Purified Rabbit Polyclonal Antibody (Pab)
Catalog # AP10255c**Specification**

L2HGDH Antibody (Center) - Product Information

Application	WB,E
Primary Accession	Q9H9P8
Other Accession	NP_079160.1
Reactivity	Human, Mouse
Host	Rabbit
Clonality	Polyclonal
Isotype	Rabbit IgG
Calculated MW	50316
Antigen Region	132-159

L2HGDH Antibody (Center) - Additional Information**Gene ID** 79944**Other Names**

L-2-hydroxyglutarate dehydrogenase, mitochondrial, Duranin, L2HGDH, C14orf160

Target/Specificity

This L2HGDH antibody is generated from rabbits immunized with a KLH conjugated synthetic peptide between 132-159 amino acids from the Central region of human L2HGDH.

Dilution

WB~~1:1000

E~~Use at an assay dependent concentration.

Format

Purified polyclonal antibody supplied in PBS with 0.09% (W/V) sodium azide. This antibody is purified through a protein A column, followed by peptide affinity purification.

Storage

Maintain refrigerated at 2-8°C for up to 2 weeks. For long term storage store at -20°C in small aliquots to prevent freeze-thaw cycles.

Precautions

L2HGDH Antibody (Center) is for research use only and not for use in diagnostic or therapeutic procedures.

L2HGDH Antibody (Center) - Protein Information**Name** L2HGDH**Synonyms** C14orf160

Cellular Location

Mitochondrion.

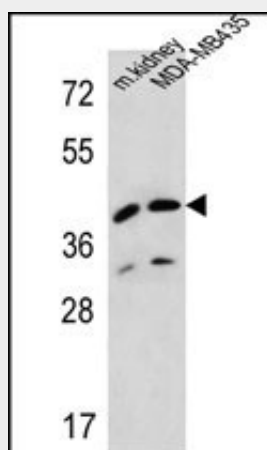
Tissue Location

Widely expressed. Highly expressed in brain, testis and muscle. Expressed to a lower extent in lymphocytes, fibroblasts, keratinocytes, placenta, bladder, small intestine, liver and bone marrow.

L2HGDH Antibody (Center) - Protocols

Provided below are standard protocols that you may find useful for product applications.

- [Western Blot](#)
- [Blocking Peptides](#)
- [Dot Blot](#)
- [Immunohistochemistry](#)
- [Immunofluorescence](#)
- [Immunoprecipitation](#)
- [Flow Cytometry](#)
- [Cell Culture](#)

L2HGDH Antibody (Center) - Images

L2HGDH Antibody (Center) (Cat. #AP10255c) western blot analysis in MDA-MB435 cell line and mouse kidney tissue lysates (35ug/lane). This demonstrates the L2HGDH antibody detected the L2HGDH protein (arrow).

L2HGDH Antibody (Center) - Background

This gene encodes L-2-hydroxyglutarate dehydrogenase, a FAD-dependent enzyme that oxidizes L-2-hydroxyglutarate to alpha-ketoglutarate in a variety of mammalian tissues. Mutations in this gene cause L-2-hydroxyglutaric aciduria, a rare autosomal recessive neurometabolic disorder resulting in moderate to severe mental retardation.

L2HGDH Antibody (Center) - References

Short, A.D., et al. Vet. Rec. 167(12):455-457(2010)
Steenweg, M.E., et al. Hum. Mutat. 31(4):380-390(2010)
Kranendijk, M., et al. Hum. Mutat. 31(3):279-283(2010)

Vilarinho, L., et al. J. Hum. Genet. 55(1):55-58(2010)
Haliloglu, G., et al. Neuropediatrics 39(2):119-122(2008)