

LUZP4 Antibody (N-term)
Affinity Purified Rabbit Polyclonal Antibody (Pab)
Catalog # AP10265a**Specification**

LUZP4 Antibody (N-term) - Product Information

Application	IHC-P, WB,E
Primary Accession	O9P127
Other Accession	NP_057467.1
Reactivity	Human
Host	Rabbit
Clonality	Polyclonal
Isotype	Rabbit IgG
Calculated MW	35937
Antigen Region	33-62

LUZP4 Antibody (N-term) - Additional Information**Gene ID** 51213**Other Names**

Leucine zipper protein 4, Cancer/testis antigen 28, CT-28, CT28, Tumor antigen HOM-TES-85, LUZP4

Target/Specificity

This LUZP4 antibody is generated from rabbits immunized with a KLH conjugated synthetic peptide between 33-62 amino acids from the N-terminal region of human LUZP4.

Dilution

IHC-P~~1:50~100

WB~~1:1000

E~~Use at an assay dependent concentration.

Format

Purified polyclonal antibody supplied in PBS with 0.09% (W/V) sodium azide. This antibody is purified through a protein A column, followed by peptide affinity purification.

Storage

Maintain refrigerated at 2-8°C for up to 2 weeks. For long term storage store at -20°C in small aliquots to prevent freeze-thaw cycles.

Precautions

LUZP4 Antibody (N-term) is for research use only and not for use in diagnostic or therapeutic procedures.

LUZP4 Antibody (N-term) - Protein Information**Name** LUZP4

Function Export adapter involved in mRNA nuclear export in cancer cells. Binds and enhances the RNA-binding activity of the nuclear RNA export factor NXF1. Can restore mRNA export function in cells compromised by loss of mRNA export adapters (PubMed:[25662211](#)).

Cellular Location

Nucleus. Cytoplasm Note=In nuclear speckles. Relocalizes to the cytoplasm during cell division.

Tissue Location

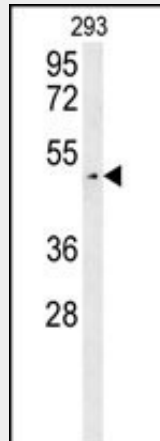
Expressed specifically in testis. Also expressed in a wide variety of cancer types, but particularly high levels of expression observed in melanoma cells.

LUZP4 Antibody (N-term) - Protocols

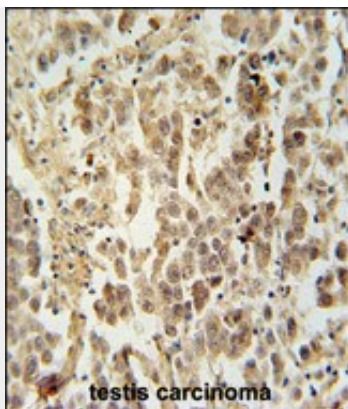
Provided below are standard protocols that you may find useful for product applications.

- [Western Blot](#)
- [Blocking Peptides](#)
- [Dot Blot](#)
- [Immunohistochemistry](#)
- [Immunofluorescence](#)
- [Immunoprecipitation](#)
- [Flow Cytometry](#)
- [Cell Culture](#)

LUZP4 Antibody (N-term) - Images



LUZP4 Antibody (N-term) (Cat. #AP10265a) western blot analysis in 293 cell line lysates (35ug/lane). This demonstrates the LUZP4 antibody detected the LUZP4 protein (arrow).



LUZP4 antibody(N-term) (Cat. #AP10265a) immunohistochemistry analysis in formalin fixed and paraffin embedded human testis carcinoma followed by peroxidase conjugation of the secondary antibody and DAB staining. This data demonstrates the use of the LUZP4 antibody(N-term) for immunohistochemistry. Clinical relevance has not been evaluated.

LUZP4 Antibody (N-term) - References

Tureci, O., et al. Oncogene 21(24):3879-3888(2002)
Sahin, U., et al. Clin. Cancer Res. 6(10):3916-3922(2000)