

HOXA10 Antibody (Center)
Affinity Purified Rabbit Polyclonal Antibody (Pab)
Catalog # AP10276C**Specification**

HOXA10 Antibody (Center) - Product Information

Application	WB, IF, E
Primary Accession	P31260
Other Accession	NP_061824.3
Reactivity	Human
Host	Rabbit
Clonality	Polyclonal
Isotype	Rabbit IgG
Calculated MW	42414
Antigen Region	244-271

HOXA10 Antibody (Center) - Additional Information**Gene ID** 3206**Other Names**

Homeobox protein Hox-A10, Homeobox protein Hox-18, Homeobox protein Hox-1H, PL, HOXA10, HOX1H

Target/Specificity

This HOXA10 antibody is generated from rabbits immunized with a KLH conjugated synthetic peptide between 244-271 amino acids from the Central region of human HOXA10.

Dilution

WB~~1:1000

IF~~1:10~50

E~~Use at an assay dependent concentration.

Format

Purified polyclonal antibody supplied in PBS with 0.09% (W/V) sodium azide. This antibody is purified through a protein A column, followed by peptide affinity purification.

Storage

Maintain refrigerated at 2-8°C for up to 2 weeks. For long term storage store at -20°C in small aliquots to prevent freeze-thaw cycles.

Precautions

HOXA10 Antibody (Center) is for research use only and not for use in diagnostic or therapeutic procedures.

HOXA10 Antibody (Center) - Protein Information**Name** HOXA10

Synonyms HOX1H

Function Sequence-specific transcription factor which is part of a developmental regulatory system that provides cells with specific positional identities on the anterior-posterior axis. Binds to the DNA sequence 5'-AA[AT]TTTTATTAC-3'.

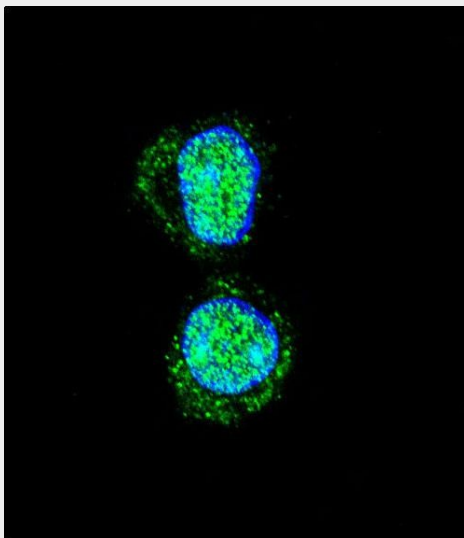
Cellular Location

Nucleus.

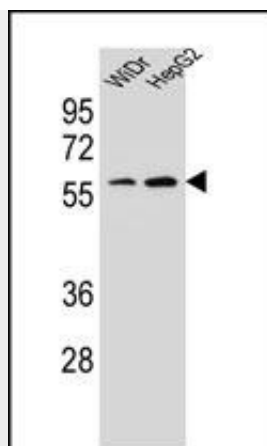
HOXA10 Antibody (Center) - Protocols

Provided below are standard protocols that you may find useful for product applications.

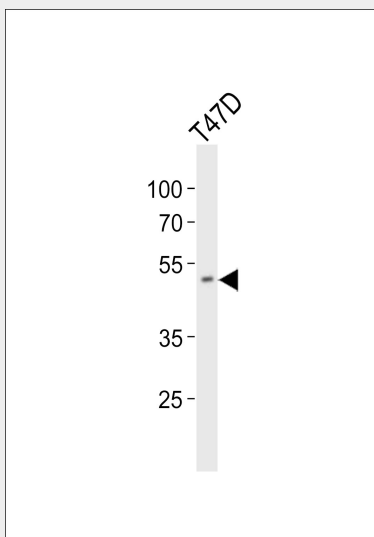
- [Western Blot](#)
- [Blocking Peptides](#)
- [Dot Blot](#)
- [Immunohistochemistry](#)
- [Immunofluorescence](#)
- [Immunoprecipitation](#)
- [Flow Cytometry](#)
- [Cell Culture](#)

HOXA10 Antibody (Center) - Images

Confocal immunofluorescent analysis of HOXA10 Antibody (Center) (Cat#AP10276c) with HepG2 cell followed by Alexa Fluor 488-conjugated goat anti-rabbit IgG (green). DAPI was used to stain the cell nuclear (blue).



HOXA10 Antibody (Center) (Cat. #AP10276c) western blot analysis in WiDr,HepG2 cell line lysates (35ug/lane).This demonstrates the HOXA10 antibody detected the HOXA10 protein (arrow).



Western blot analysis of lysate from T47D cell line, using HOXA10 Antibody (Center)(Cat. #AP10276c). AP10276c was diluted at 1:1000. A goat anti-rabbit IgG H&L(HRP) at 1:10000 dilution was used as the secondary antibody. Lysate at 20ug.

HOXA10 Antibody (Center) - Background

In vertebrates, the genes encoding the class of transcription factors called homeobox genes are found in clusters named A, B, C, and D on four separate chromosomes. Expression of these proteins is spatially and temporally regulated during embryonic development. This gene is part of the A cluster on chromosome 7 and encodes a DNA-binding transcription factor that may regulate gene expression, morphogenesis, and differentiation. More specifically, it may function in fertility, embryo viability, and regulation of hematopoietic lineage commitment. Alternatively spliced transcript variants encoding different isoforms have been described.

HOXA10 Antibody (Center) - References

Du, H., et al. Biol. Reprod. 83(2):205-211(2010)

Cheng, W., et al. J. Cancer Res. Clin. Oncol. 136(8):1221-1227(2010)

Liatsikos, S.A., et al. Reprod. Biomed. Online 21(1):126-132(2010)

Godbole, G., et al. J. Reprod. Immunol. 85(2):130-139(2010)

Ko, S.Y., et al. Mol. Cell. Endocrinol. 317 (1-2), 112-119 (2010) :