

NAT14 Antibody (N-term)
Affinity Purified Rabbit Polyclonal Antibody (Pab)
Catalog # AP10287c

Specification

NAT14 Antibody (N-term) - Product Information

Application	WB, IHC-P,E
Primary Accession	Q8WUY8
Other Accession	Q8BVG8 , Q9N0D0 , Q3MHZ1 , NP_065111.1
Reactivity	Human
Predicted	Bovine, Monkey, Mouse
Host	Rabbit
Clonality	Polyclonal
Isotype	Rabbit IgG
Calculated MW	21650
Antigen Region	5-33

NAT14 Antibody (N-term) - Additional Information

Gene ID 57106

Other Names

N-acetyltransferase 14, 231-, K562 cell-derived leucine-zipper-like protein 1, NAT14, KLP1

Target/Specificity

This NAT14 antibody is generated from rabbits immunized with a KLH conjugated synthetic peptide between 5-33 amino acids from the N-terminal region of human NAT14.

Dilution

WB~~1:1000

IHC-P~~1:50~100

E~~Use at an assay dependent concentration.

Format

Purified polyclonal antibody supplied in PBS with 0.09% (W/V) sodium azide. This antibody is purified through a protein A column, followed by peptide affinity purification.

Storage

Maintain refrigerated at 2-8°C for up to 2 weeks. For long term storage store at -20°C in small aliquots to prevent freeze-thaw cycles.

Precautions

NAT14 Antibody (N-term) is for research use only and not for use in diagnostic or therapeutic procedures.

NAT14 Antibody (N-term) - Protein Information

Name NAT14

Synonyms KLP1

Function Probable acetyltransferase.

Cellular Location

Membrane; Single-pass membrane protein

Tissue Location

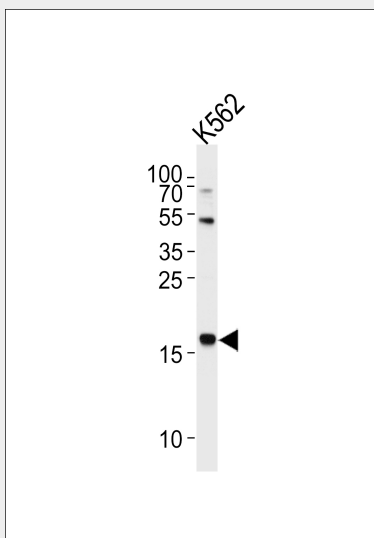
Expressed in K-562 and HeLa cell lines and in brain.

NAT14 Antibody (N-term) - Protocols

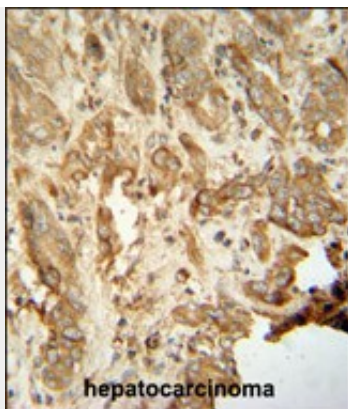
Provided below are standard protocols that you may find useful for product applications.

- [Western Blot](#)
- [Blocking Peptides](#)
- [Dot Blot](#)
- [Immunohistochemistry](#)
- [Immunofluorescence](#)
- [Immunoprecipitation](#)
- [Flow Cytometry](#)
- [Cell Culture](#)

NAT14 Antibody (N-term) - Images



Western blot analysis of lysate from K562 cell line, using NAT14 Antibody (N-term)(Cat. #AP10287c). AP10287c was diluted at 1:1000 at each lane. A goat anti-rabbit IgG H&L(HRP) at 1:5000 dilution was used as the secondary antibody. Lysate at 35ug per lane.



NAT14 antibody (N-term) (Cat. #AP10287c) immunohistochemistry analysis in formalin fixed and paraffin embedded human hepatocarcinoma followed by peroxidase conjugation of the secondary antibody and DAB staining. This data demonstrates the use of the NAT14 antibody (N-term) for immunohistochemistry. Clinical relevance has not been evaluated.

NAT14 Antibody (N-term) - References

- Wiame, E., et al. *Biochem. J.* 425(1):127-136(2010)
Lamesch, P., et al. *Genomics* 89(3):307-315(2007)
Oh, J.H., et al. *Mamm. Genome* 16(12):942-954(2005)
Takahashi, S., et al. *Biochim. Biophys. Acta* 1522(3):207-211(2001)
Takahashi, S., et al. *Biochem. Biophys. Res. Commun.* 273(2):596-602(2000)