

PDE12 Antibody (C-term)
Affinity Purified Rabbit Polyclonal Antibody (Pab)
Catalog # AP10288b

Specification

PDE12 Antibody (C-term) - Product Information

Application	FC, WB,E
Primary Accession	Q6L8Q7
Other Accession	Q6AXQ5 , Q3TIU4 , Q08DF7 , NP_808881.3
Reactivity	Human
Predicted	Bovine, Mouse, Rat
Host	Rabbit
Clonality	Polyclonal
Isotype	Rabbit IgG
Calculated MW	67352
Antigen Region	362-390

PDE12 Antibody (C-term) - Additional Information

Gene ID 201626

Other Names

2', 5'-phosphodiesterase 12, 2'-PDE, 2-PDE, 314-, Mitochondrial deadenylase, PDE12

Target/Specificity

This PDE12 antibody is generated from rabbits immunized with a KLH conjugated synthetic peptide between 362-390 amino acids from the C-terminal region of human PDE12.

Dilution

FC~~1:10~50

WB~~1:1000

E~~Use at an assay dependent concentration.

Format

Purified polyclonal antibody supplied in PBS with 0.09% (W/V) sodium azide. This antibody is purified through a protein A column, followed by peptide affinity purification.

Storage

Maintain refrigerated at 2-8°C for up to 2 weeks. For long term storage store at -20°C in small aliquots to prevent freeze-thaw cycles.

Precautions

PDE12 Antibody (C-term) is for research use only and not for use in diagnostic or therapeutic procedures.

PDE12 Antibody (C-term) - Protein Information

Name PDE12

Function Enzyme that cleaves 2',5'-phosphodiester bond linking adenosines of the 5'-triphosphorylated oligoadenylates, triphosphorylated oligoadenylates referred as 2-5A modulates the 2-5A system. Degrades triphosphorylated 2-5A to produce AMP and ATP (PubMed:[26055709](#)). Also cleaves 3',5'-phosphodiester bond of oligoadenylates (PubMed:[21666256](#), PubMed:[26055709](#), PubMed:[30389976](#)). Plays a role as a negative regulator of the 2-5A system that is one of the major pathways for antiviral and antitumor functions induced by interferons (IFNs). Suppression of this enzyme increases cellular 2-5A levels and decreases viral replication in cultured small-airway epithelial cells and Hela cells (PubMed:[26055709](#)).

Cellular Location

Mitochondrion matrix

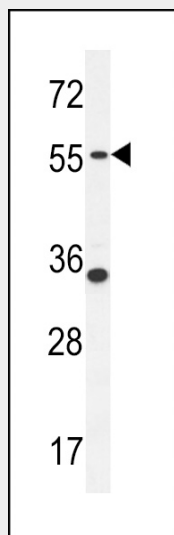
Tissue Location

Ubiquitous..

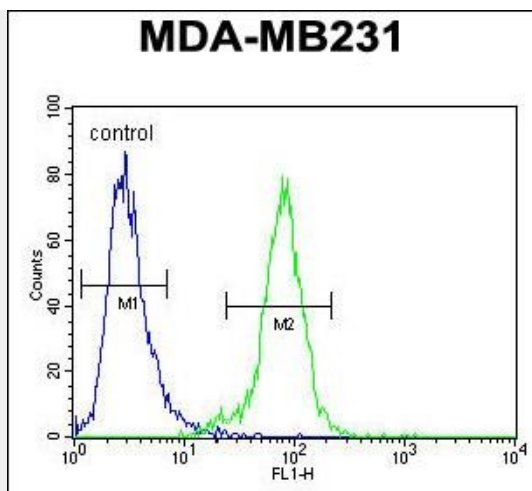
PDE12 Antibody (C-term) - Protocols

Provided below are standard protocols that you may find useful for product applications.

- [Western Blot](#)
- [Blocking Peptides](#)
- [Dot Blot](#)
- [Immunohistochemistry](#)
- [Immunofluorescence](#)
- [Immunoprecipitation](#)
- [Flow Cytometry](#)
- [Cell Culture](#)

PDE12 Antibody (C-term) - Images

PDE12 Antibody (C-term) (Cat. #AP10288b) western blot analysis in MDA-MB231 cell line lysates (35ug/lane). This demonstrates the PDE12 antibody detected the PDE12 protein (arrow).



PDE12 Antibody (C-term) (Cat. #AP10288b) flow cytometric analysis of MDA-MB231 cells (right histogram) compared to a negative control cell (left histogram). FITC-conjugated goat-anti-rabbit secondary antibodies were used for the analysis.

PDE12 Antibody (C-term) - References

Kohno, T., et al. Acta Crystallogr. Sect. F Struct. Biol. Cryst. Commun. 66 (PT 5), 520-522 (2010) :
Kubota, K., et al. J. Biol. Chem. 279(36):37832-37841(2004)