

**RILPL1 Antibody (C-term)**  
**Affinity Purified Rabbit Polyclonal Antibody (Pab)**  
**Catalog # AP10297b****Specification**

---

**RILPL1 Antibody (C-term) - Product Information**

Application	WB, IHC-P,E
Primary Accession	<a href="#">Q5EBL4</a>
Other Accession	<a href="#">Q0IHE5</a> , <a href="#">Q9JJC6</a> , <a href="#">Q17QG3</a> , <a href="#">NP_847884.2</a>
Reactivity	Human, Mouse
Predicted	Bovine, Xenopus
Host	Rabbit
Clonality	Polyclonal
Isotype	Rabbit IgG
Calculated MW	47108
Antigen Region	337-366

**RILPL1 Antibody (C-term) - Additional Information****Gene ID** 353116**Other Names**

RILP-like protein 1, Rab-interacting lysosomal-like protein 1, RILPL1, RLP1

**Target/Specificity**

This RILPL1 antibody is generated from rabbits immunized with a KLH conjugated synthetic peptide between 337-366 amino acids from the C-terminal region of human RILPL1.

**Dilution**

WB~~1:1000

IHC-P~~1:50~100

**Format**

Purified polyclonal antibody supplied in PBS with 0.09% (W/V) sodium azide. This antibody is purified through a protein A column, followed by peptide affinity purification.

**Storage**

Maintain refrigerated at 2-8°C for up to 2 weeks. For long term storage store at -20°C in small aliquots to prevent freeze-thaw cycles.

**Precautions**

RILPL1 Antibody (C-term) is for research use only and not for use in diagnostic or therapeutic procedures.

**RILPL1 Antibody (C-term) - Protein Information****Name** RILPL1

## Synonyms RLP1

**Function** Plays a role in the regulation of cell shape and polarity (By similarity). Plays a role in cellular protein transport, including protein transport away from primary cilia (By similarity). Neuroprotective protein, which acts by sequestering GAPDH in the cytosol and prevent the apoptotic function of GAPDH in the nucleus (By similarity). Competes with SIAH1 for binding GAPDH (By similarity). Does not regulate lysosomal morphology and distribution (PubMed:[14668488](#)). Binds to RAB10 following LRRK2-mediated RAB10 phosphorylation which leads to inhibition of ciliogenesis (PubMed:[30398148](#)).

## Cellular Location

Cytoplasm, cytosol. Cytoplasm, cytoskeleton, microtubule organizing center, centrosome, centriole  
Cytoplasm, cytoskeleton, cilium basal body

## Tissue Location

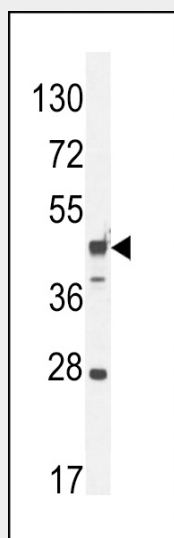
Widely expressed. Expressed at lower level in liver and kidney.

## RILPL1 Antibody (C-term) - Protocols

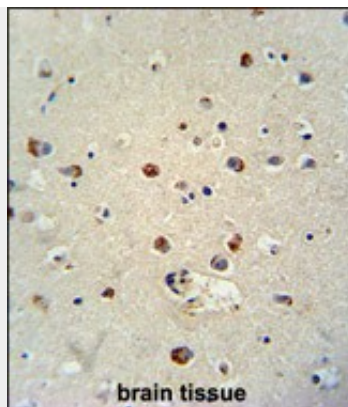
Provided below are standard protocols that you may find useful for product applications.

- [Western Blot](#)
- [Blocking Peptides](#)
- [Dot Blot](#)
- [Immunohistochemistry](#)
- [Immunofluorescence](#)
- [Immunoprecipitation](#)
- [Flow Cytometry](#)
- [Cell Culture](#)

## RILPL1 Antibody (C-term) - Images



RILPL1 Antibody (C-term) (Cat. #AP10297b) western blot analysis in mouse heart tissue lysates (35ug/lane). This demonstrates the RILPL1 antibody detected the RILPL1 protein (arrow).



RILPL1 antibody (C-term) (Cat. #AP10297b) immunohistochemistry analysis in formalin fixed and paraffin embedded human brain tissue followed by peroxidase conjugation of the secondary antibody and DAB staining. This data demonstrates the use of the RILPL1 antibody (C-term) for immunohistochemistry. Clinical relevance has not been evaluated.

#### **RILPL1 Antibody (C-term) - References**

Wang, T., et al. Mol. Biol. Cell 15(2):815-826(2004)