

CCDC123 Antibody (C-term)
Affinity Purified Rabbit Polyclonal Antibody (Pab)
Catalog # AP10301B**Specification**

CCDC123 Antibody (C-term) - Product Information

Application	WB, IHC-P, FC,E
Primary Accession	O96ST8
Other Accession	NP_116205.3
Reactivity	Human, Mouse
Host	Rabbit
Clonality	Polyclonal
Isotype	Rabbit IgG
Calculated MW	89590
Antigen Region	658-687

CCDC123 Antibody (C-term) - Additional Information**Gene ID** 84902**Other Names**

Centrosomal protein of 89 kDa, Cep89, Centrosomal protein 123, Cep123, Coiled-coil domain-containing protein 123, CEP89, CCDC123

Target/Specificity

This CCDC123 antibody is generated from rabbits immunized with a KLH conjugated synthetic peptide between 658-687 amino acids from the C-terminal region of human CCDC123.

Dilution

WB~~1:1000
IHC-P~~1:50~100
FC~~1:10~50

Format

Purified polyclonal antibody supplied in PBS with 0.09% (W/V) sodium azide. This antibody is purified through a protein A column, followed by peptide affinity purification.

Storage

Maintain refrigerated at 2-8°C for up to 2 weeks. For long term storage store at -20°C in small aliquots to prevent freeze-thaw cycles.

Precautions

CCDC123 Antibody (C-term) is for research use only and not for use in diagnostic or therapeutic procedures.

CCDC123 Antibody (C-term) - Protein Information**Name** CEP89

Synonyms CCDC123

Function Required for ciliogenesis. Also plays a role in mitochondrial metabolism where it may modulate complex IV activity.

Cellular Location

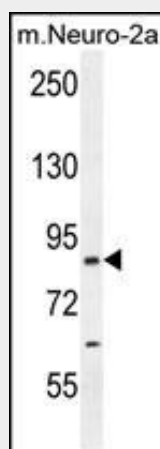
Cytoplasm, cytosol. Cytoplasm, cytoskeleton, microtubule organizing center, centrosome. Cytoplasm, cytoskeleton, spindle pole Cytoplasm, cytoskeleton, microtubule organizing center, centrosome, centriole. Mitochondrion intermembrane space. Note=Localizes to the distal appendage region of the centriole, which anchors the mother centriole to the plasma membrane

CCDC123 Antibody (C-term) - Protocols

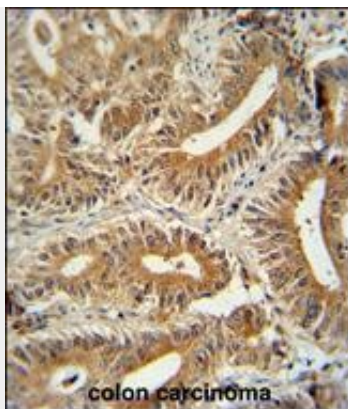
Provided below are standard protocols that you may find useful for product applications.

- [Western Blot](#)
- [Blocking Peptides](#)
- [Dot Blot](#)
- [Immunohistochemistry](#)
- [Immunofluorescence](#)
- [Immunoprecipitation](#)
- [Flow Cytometry](#)
- [Cell Culture](#)

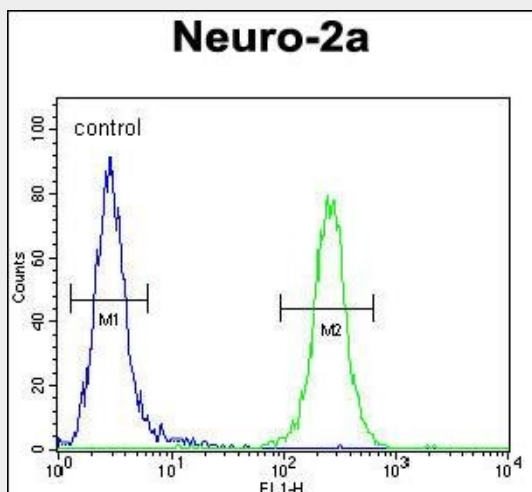
CCDC123 Antibody (C-term) - Images



CCDC123 Antibody (C-term) (Cat. #AP10301b) western blot analysis in mouse Neuro-2a cell line lysates (35ug/lane). This demonstrates the CCDC123 antibody detected the CCDC123 protein (arrow).



CCDC123 antibody (C-term) (Cat. #AP10301b) immunohistochemistry analysis in formalin fixed and paraffin embedded human colon carcinoma followed by peroxidase conjugation of the secondary antibody and DAB staining. This data demonstrates the use of the CCDC123 antibody (C-term) for immunohistochemistry. Clinical relevance has not been evaluated.



CCDC123 Antibody (C-term) (Cat. #AP10301b) flow cytometric analysis of Neuro-2a cells (right histogram) compared to a negative control cell (left histogram). FITC-conjugated goat-anti-rabbit secondary antibodies were used for the analysis.

CCDC123 Antibody (C-term) - References

- Kottgen, A., et al. Nat. Genet. 42(5):376-384(2010)
Chambers, J.C., et al. Nat. Genet. 42(5):373-375(2010)
Hahn, Y., et al. Hum. Genet. 119 (1-2), 169-178 (2006) :