

**PEAR1 Antibody (C-term)**  
**Affinity Purified Rabbit Polyclonal Antibody (Pab)**  
**Catalog # AP10334B**

**Specification**

---

**PEAR1 Antibody (C-term) - Product Information**

Application	IHC-P, WB,E
Primary Accession	<a href="#">Q5VY43</a>
Other Accession	<a href="#">NP_001073940.1</a>
Reactivity	Human
Host	Rabbit
Clonality	Polyclonal
Isotype	Rabbit IgG
Calculated MW	110666
Antigen Region	961-990

**PEAR1 Antibody (C-term) - Additional Information**

**Gene ID** 375033

**Other Names**

Platelet endothelial aggregation receptor 1, hPEAR1, Multiple epidermal growth factor-like domains protein 12, Multiple EGF-like domains protein 12, PEAR1, MEGF12

**Target/Specificity**

This PEAR1 antibody is generated from rabbits immunized with a KLH conjugated synthetic peptide between 961-990 amino acids from the C-terminal region of human PEAR1.

**Dilution**

IHC-P~~1:50~100

WB~~1:1000

E~~Use at an assay dependent concentration.

**Format**

Purified polyclonal antibody supplied in PBS with 0.09% (W/V) sodium azide. This antibody is purified through a protein A column, followed by peptide affinity purification.

**Storage**

Maintain refrigerated at 2-8°C for up to 2 weeks. For long term storage store at -20°C in small aliquots to prevent freeze-thaw cycles.

**Precautions**

PEAR1 Antibody (C-term) is for research use only and not for use in diagnostic or therapeutic procedures.

**PEAR1 Antibody (C-term) - Protein Information**

**Name** PEAR1

**Synonyms** MEGF12

**Function** Required for SVEP1-mediated platelet activation, via its interaction with SVEP1 and subsequent activation of AKT/mTOR signaling (PubMed:[36792666](#)). May be involved in the early stages of hematopoiesis (By similarity).

**Cellular Location**

Cell membrane; Single-pass membrane protein. Cell projection, lamellipodium. Note=Detected on the cell surface in resting platelets.

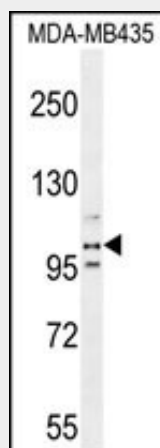
**Tissue Location**

Expressed in umbilical vein endothelial cells and platelets (at protein level) (PubMed:15851471, PubMed:36792666) Expressed in coronary artery smooth muscle cells (at protein level) (PubMed:36792666). Expressed in heart, kidney, skeletal muscle, pancreas, ovary, breast, lung, brain cortex, hypothalamus, spinal cord, dorsal root ganglion (PubMed:15851471). Expressed in umbilical artery endothelial cells, megakaryocytes, osteoblasts, coronary muscle and erythroid cells (PubMed:15851471).

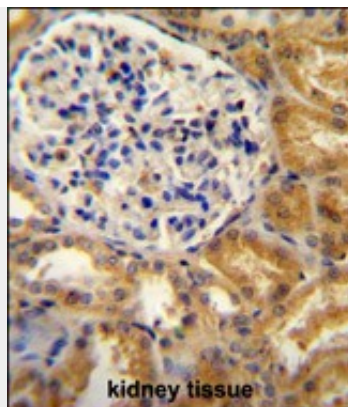
**PEAR1 Antibody (C-term) - Protocols**

Provided below are standard protocols that you may find useful for product applications.

- [Western Blot](#)
- [Blocking Peptides](#)
- [Dot Blot](#)
- [Immunohistochemistry](#)
- [Immunofluorescence](#)
- [Immunoprecipitation](#)
- [Flow Cytometry](#)
- [Cell Culture](#)

**PEAR1 Antibody (C-term) - Images**

PEAR1 Antibody (C-term) (Cat. #AP10334b) western blot analysis in MDA-MB435 cell line lysates (35ug/lane). This demonstrates the PEAR1 antibody detected the PEAR1 protein (arrow).



PEAR1 antibody (C-term) (Cat. #AP10334b) immunohistochemistry analysis in formalin fixed and paraffin embedded human kidney tissue followed by peroxidase conjugation of the secondary antibody and DAB staining. This data demonstrates the use of the PEAR1 antibody (C-term) for immunohistochemistry. Clinical relevance has not been evaluated.

#### **PEAR1 Antibody (C-term) - Background**

PEAR1 is a platelet receptor that signals upon the formation of platelet-platelet contacts independent of platelet activation and secondary to platelet aggregation (Nanda et al., 2005 [PubMed 15851471]).

#### **PEAR1 Antibody (C-term) - References**

- Johnson, A.D., et al. Nat. Genet. 42(7):608-613(2010)
- Jones, C.I., et al. Blood 114(7):1405-1416(2009)
- Herrera-Galeano, J.E., et al. Arterioscler. Thromb. Vasc. Biol. 28(8):1484-1490(2008)
- Nanda, N., et al. J. Biol. Chem. 280(26):24680-24689(2005)
- Nanda, N., et al. J. Biol. Chem. 280(26):24680-24689(2005)