

ATPBD3 Antibody (Center)
Affinity Purified Rabbit Polyclonal Antibody (Pab)
Catalog # AP10349C**Specification**

ATPBD3 Antibody (Center) - Product Information

Application	IHC-P, WB,E
Primary Accession	Q7Z7A3
Other Accession	Q0VC66 , NP_660275.2
Reactivity	Human, Mouse
Predicted	Bovine
Host	Rabbit
Clonality	Polyclonal
Isotype	Rabbit IgG
Calculated MW	36450
Antigen Region	208-236

ATPBD3 Antibody (Center) - Additional Information**Gene ID** 90353**Other Names**

Cytoplasmic tRNA 2-thiolation protein 1 {ECO:0000255|HAMAP-Rule:MF_03053}, 277-
{ECO:0000255|HAMAP-Rule:MF_03053}, ATP-binding domain-containing protein 3
{ECO:0000255|HAMAP-Rule:MF_03053}, Cancer-associated gene protein, Cytoplasmic tRNA
adenylyltransferase 1 {ECO:0000255|HAMAP-Rule:MF_03053}, CTU1
{ECO:0000255|HAMAP-Rule:MF_03053}

Target/Specificity

This ATPBD3 antibody is generated from rabbits immunized with a KLH conjugated synthetic peptide between 208-236 amino acids from the Central region of human ATPBD3.

Dilution

IHC-P~~1:50~100

WB~~1:1000

E~~Use at an assay dependent concentration.

Format

Purified polyclonal antibody supplied in PBS with 0.09% (W/V) sodium azide. This antibody is purified through a protein A column, followed by peptide affinity purification.

Storage

Maintain refrigerated at 2-8°C for up to 2 weeks. For long term storage store at -20°C in small aliquots to prevent freeze-thaw cycles.

Precautions

ATPBD3 Antibody (Center) is for research use only and not for use in diagnostic or therapeutic procedures.

ATPBD3 Antibody (Center) - Protein Information

Name CTU1 {ECO:0000255|HAMAP-Rule:MF_03053}

Function Plays a central role in 2-thiolation of mcm(5)S(2)U at tRNA wobble positions of tRNA(Lys), tRNA(Glu) and tRNA(Gln). Directly binds tRNAs and probably acts by catalyzing adenylation of tRNAs, an intermediate required for 2-thiolation. It is unclear whether it acts as a sulfurtransferase that transfers sulfur from thiocarboxylated URM1 onto the uridine of tRNAs at wobble position.

Cellular Location

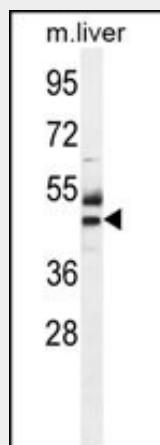
Cytoplasm.

ATPBD3 Antibody (Center) - Protocols

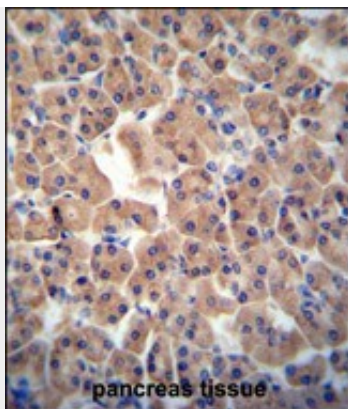
Provided below are standard protocols that you may find useful for product applications.

- [Western Blot](#)
- [Blocking Peptides](#)
- [Dot Blot](#)
- [Immunohistochemistry](#)
- [Immunofluorescence](#)
- [Immunoprecipitation](#)
- [Flow Cytometry](#)
- [Cell Culture](#)

ATPBD3 Antibody (Center) - Images



ATPBD3 Antibody (Center) (Cat. #AP10349c) western blot analysis in mouse liver tissue lysates (35ug/lane). This demonstrates the ATPBD3 antibody detected the ATPBD3 protein (arrow).



ATPBD3 antibody (Center) (Cat. #AP10349c) immunohistochemistry analysis in formalin fixed and paraffin embedded human pancreas tissue followed by peroxidase conjugation of the secondary antibody and DAB staining. This data demonstrates the use of the ATPBD3 antibody (Center) for immunohistochemistry. Clinical relevance has not been evaluated.

ATPBD3 Antibody (Center) - References

Schlieker, C.D., et al. Proc. Natl. Acad. Sci. U.S.A. 105(47):18255-18260(2008)
Beausoleil, S.A., et al. Nat. Biotechnol. 24(10):1285-1292(2006)