

KCNT2 Antibody (C-term)
Affinity Purified Rabbit Polyclonal Antibody (Pab)
Catalog # AP10351b**Specification**

KCNT2 Antibody (C-term) - Product Information

Application	WB, IHC-P, FC,E
Primary Accession	Q6UVM3
Other Accession	NP_940905.2
Reactivity	Human
Host	Rabbit
Clonality	Polyclonal
Isotype	Rabbit IgG
Calculated MW	130501
Antigen Region	1069-1097

KCNT2 Antibody (C-term) - Additional Information**Gene ID** 343450**Other Names**

Potassium channel subfamily T member 2, Sequence like an intermediate conductance potassium channel subunit, Sodium and chloride-activated ATP-sensitive potassium channel Slo21, KCNT2, SLICK

Target/Specificity

This KCNT2 antibody is generated from rabbits immunized with a KLH conjugated synthetic peptide between 1069-1097 amino acids from the C-terminal region of human KCNT2.

Dilution

WB~~1:1000
IHC-P~~1:50~100
FC~~1:10~50

Format

Purified polyclonal antibody supplied in PBS with 0.09% (W/V) sodium azide. This antibody is purified through a protein A column, followed by peptide affinity purification.

Storage

Maintain refrigerated at 2-8°C for up to 2 weeks. For long term storage store at -20°C in small aliquots to prevent freeze-thaw cycles.

Precautions

KCNT2 Antibody (C-term) is for research use only and not for use in diagnostic or therapeutic procedures.

KCNT2 Antibody (C-term) - Protein Information

Name KCNT2

Synonyms SLICK

Function Outward rectifying potassium channel. Produces rapidly activating outward rectifier K(+) currents. Activated by high intracellular sodium and chloride levels (PubMed:[14684870](#), PubMed:[16687497](#), PubMed:[29069600](#)). Channel activity is inhibited by ATP and by inhalation anesthetics, such as isoflurane (PubMed:[16687497](#)) (By similarity). Inhibited upon stimulation of G-protein coupled receptors, such as CHRM1 and GRM1 (PubMed:[16687497](#)).

Cellular Location

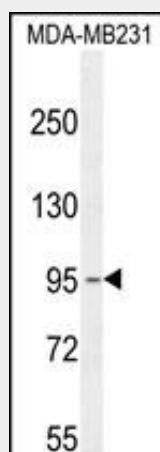
Cell membrane; Multi-pass membrane protein

KCNT2 Antibody (C-term) - Protocols

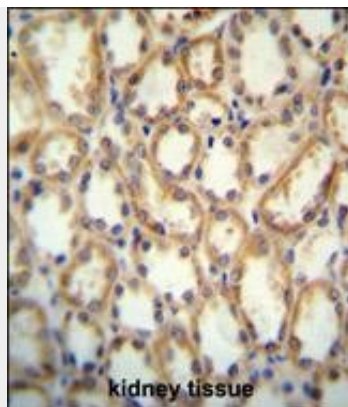
Provided below are standard protocols that you may find useful for product applications.

- [Western Blot](#)
- [Blocking Peptides](#)
- [Dot Blot](#)
- [Immunohistochemistry](#)
- [Immunofluorescence](#)
- [Immunoprecipitation](#)
- [Flow Cytometry](#)
- [Cell Culture](#)

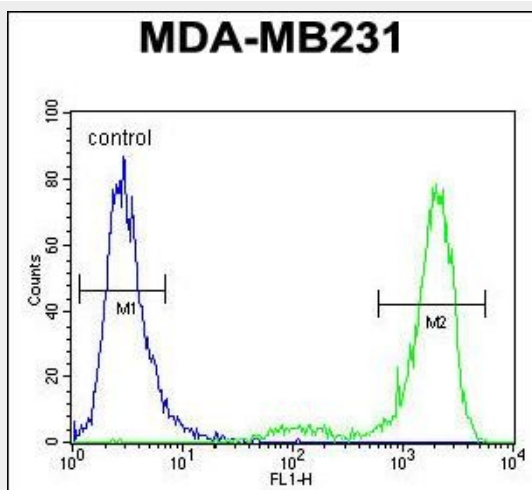
KCNT2 Antibody (C-term) - Images



KCNT2 Antibody (C-term) (Cat. #AP10351b) western blot analysis in MDA-MB231 cell line lysates (35ug/lane). This demonstrates the KCNT2 antibody detected the KCNT2 protein (arrow).



KCNT2 antibody (C-term) (Cat. #AP10351b) immunohistochemistry analysis in formalin fixed and paraffin embedded human kidney tissue followed by peroxidase conjugation of the secondary antibody and DAB staining. This data demonstrates the use of the KCNT2 antibody (C-term) for immunohistochemistry. Clinical relevance has not been evaluated.



KCNT2 Antibody (C-term) (Cat. #AP10351b) flow cytometric analysis of MDA-MB231 cells (right histogram) compared to a negative control cell (left histogram). FITC-conjugated goat-anti-rabbit secondary antibodies were used for the analysis.

KCNT2 Antibody (C-term) - References

- Santi, C.M., et al. J. Neurosci. 26(19):5059-5068(2006)
Wei, A.D., et al. Pharmacol. Rev. 57(4):463-472(2005)
Bhattacharjee, A., et al. J. Neurosci. 23(37):11681-11691(2003)