

WFDC12 Antibody (C-term)
Affinity Purified Rabbit Polyclonal Antibody (Pab)
Catalog # AP10369b**Specification**

WFDC12 Antibody (C-term) - Product Information

Application	WB, FC, IHC-P,E
Primary Accession	Q8WWY7
Other Accession	NP_543145.1
Reactivity	Human
Host	Rabbit
Clonality	Polyclonal
Isotype	Rabbit IgG
Calculated MW	12050
Antigen Region	66-94

WFDC12 Antibody (C-term) - Additional Information**Gene ID** 128488**Other Names**

WAP four-disulfide core domain protein 12, Putative protease inhibitor WAP12, Whey acidic protein 2, WFDC12, C20orf122, WAP2

Target/Specificity

This WFDC12 antibody is generated from rabbits immunized with a KLH conjugated synthetic peptide between 66-94 amino acids from the C-terminal region of human WFDC12.

Dilution

WB~~1:1000
FC~~1:10~50
IHC-P~~1:50~100
E~~Use at an assay dependent concentration.

Format

Purified polyclonal antibody supplied in PBS with 0.09% (W/V) sodium azide. This antibody is purified through a protein A column, followed by peptide affinity purification.

Storage

Maintain refrigerated at 2-8°C for up to 2 weeks. For long term storage store at -20°C in small aliquots to prevent freeze-thaw cycles.

Precautions

WFDC12 Antibody (C-term) is for research use only and not for use in diagnostic or therapeutic procedures.

WFDC12 Antibody (C-term) - Protein Information

Name WFDC12

Synonyms C20orf122, WAP2

Function Antibacterial protein. Putative acid-stable proteinase inhibitor.

Cellular Location

Secreted.

Tissue Location

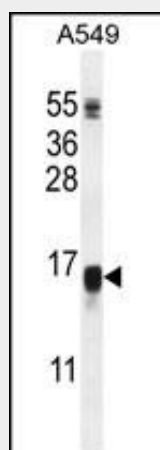
Highly expressed in prostate, skin, lung and esophagus. Weakly expressed in skeletal muscle, epididymis, kidney, trachea, salivary gland, testis and seminal vesicle

WFDC12 Antibody (C-term) - Protocols

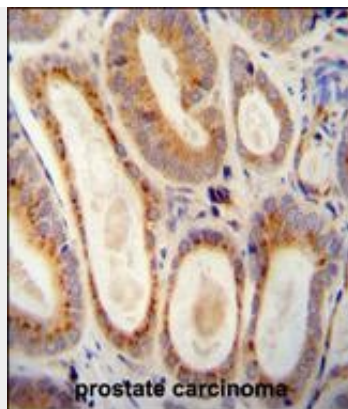
Provided below are standard protocols that you may find useful for product applications.

- [Western Blot](#)
- [Blocking Peptides](#)
- [Dot Blot](#)
- [Immunohistochemistry](#)
- [Immunofluorescence](#)
- [Immunoprecipitation](#)
- [Flow Cytometry](#)
- [Cell Culture](#)

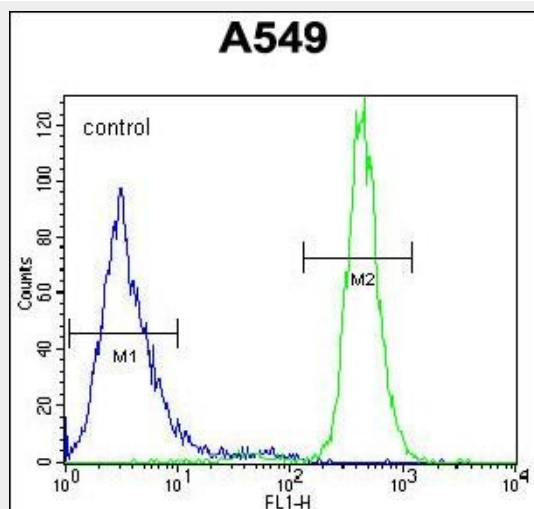
WFDC12 Antibody (C-term) - Images



WFDC12 Antibody (C-term) (Cat. #AP10369b) western blot analysis in A549 cell line lysates (35ug/lane). This demonstrates the WFDC12 antibody detected the WFDC12 protein (arrow).



WFDC12 antibody (C-term) (Cat. #AP10369b) immunohistochemistry analysis in formalin fixed and paraffin embedded human prostate carcinoma followed by peroxidase conjugation of the secondary antibody and DAB staining. This data demonstrates the use of the WFDC12 antibody (C-term) for immunohistochemistry. Clinical relevance has not been evaluated.



WFDC12 Antibody (C-term) (Cat. #AP10369b) flow cytometric analysis of A549 cells (right histogram) compared to a negative control cell (left histogram). FITC-conjugated goat-anti-rabbit secondary antibodies were used for the analysis.

WFDC12 Antibody (C-term) - Background

This gene encodes a member of the WAP-type four-disulfide core (WFDC) domain family. The WFDC domain, or WAP signature motif, contains eight cysteines forming four disulfide bonds at the core of the protein, and functions as a protease inhibitor. Most WFDC gene members are localized to chromosome 20q12-q13 in two clusters: centromeric and telomeric. This gene belongs to the centromeric cluster.

WFDC12 Antibody (C-term) - References

Clauss, A., et al. Biochem. Biophys. Res. Commun. 333(2):383-389(2005)
Clark, H.F., et al. Genome Res. 13(10):2265-2270(2003)
Clauss, A., et al. Biochem. J. 368 (PT 1), 233-242 (2002) :
Lundwall, A., et al. Biochem. Biophys. Res. Commun. 290(1):452-456(2002)
Deloukas, P., et al. Nature 414(6866):865-871(2001)

WFDC12 Antibody (C-term) - Citations

- [Analysis of salivary factors related to the oral health status in children](#)