

**SERPINI1 Antibody (N-term)**  
**Affinity Purified Rabbit Polyclonal Antibody (Pab)**  
**Catalog # AP10388a****Specification**

---

**SERPINI1 Antibody (N-term) - Product Information**

Application	WB, FC, IF, IHC-P,E
Primary Accession	<a href="#">Q99574</a>
Other Accession	<a href="#">NP_001116224.1</a>
Reactivity	Human
Host	Rabbit
Clonality	Polyclonal
Isotype	Rabbit IgG
Calculated MW	46427
Antigen Region	19-45

**SERPINI1 Antibody (N-term) - Additional Information****Gene ID** 5274**Other Names**

Neuroserpin, Peptidase inhibitor 12, PI-12, Serpin I1, SERPINI1, PI12

**Target/Specificity**

This SERPINI1 antibody is generated from rabbits immunized with a KLH conjugated synthetic peptide between 19-45 amino acids from the N-terminal region of human SERPINI1.

**Dilution**

WB~~1:1000  
FC~~1:10~50  
IF~~1:10~50  
IHC-P~~1:50~100  
E~~Use at an assay dependent concentration.

**Format**

Purified polyclonal antibody supplied in PBS with 0.09% (W/V) sodium azide. This antibody is purified through a protein A column, followed by peptide affinity purification.

**Storage**

Maintain refrigerated at 2-8°C for up to 2 weeks. For long term storage store at -20°C in small aliquots to prevent freeze-thaw cycles.

**Precautions**

SERPINI1 Antibody (N-term) is for research use only and not for use in diagnostic or therapeutic procedures.

**SERPINI1 Antibody (N-term) - Protein Information**

**Name** SERPINI1

**Synonyms** PI12

**Function** Serine protease inhibitor that inhibits plasminogen activators and plasmin but not thrombin (PubMed:[11880376](#), PubMed:[19265707](#), PubMed:[19285087](#), PubMed:[26329378](#), PubMed:[9442076](#)). May be involved in the formation or reorganization of synaptic connections as well as for synaptic plasticity in the adult nervous system. May protect neurons from cell damage by tissue-type plasminogen activator (Probable).

**Cellular Location**

Secreted. Cytoplasmic vesicle, secretory vesicle lumen. Perikaryon

**Tissue Location**

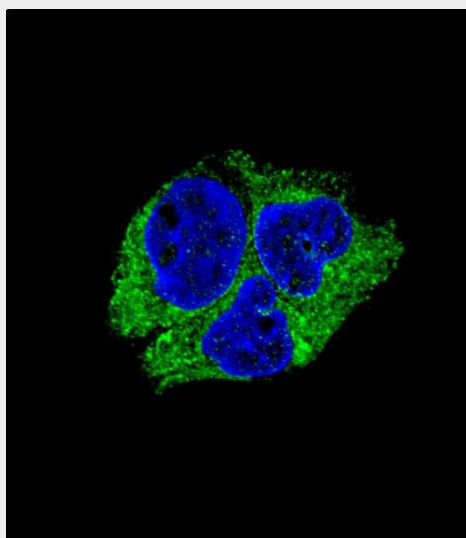
Detected in brain cortex and hippocampus pyramidal neurons (at protein level) (PubMed:17040209). Detected in cerebrospinal fluid (at protein level) (PubMed:25326458). Predominantly expressed in the brain (PubMed:9070919).

**SERPINI1 Antibody (N-term) - Protocols**

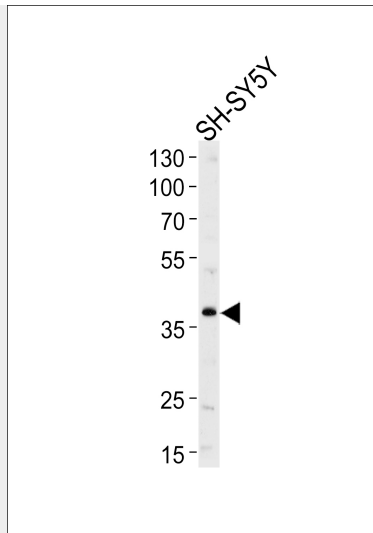
Provided below are standard protocols that you may find useful for product applications.

- [Western Blot](#)
- [Blocking Peptides](#)
- [Dot Blot](#)
- [Immunohistochemistry](#)
- [Immunofluorescence](#)
- [Immunoprecipitation](#)
- [Flow Cytometry](#)
- [Cell Culture](#)

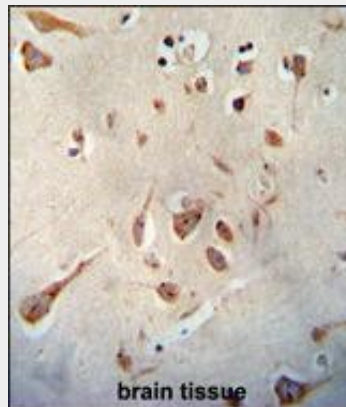
**SERPINI1 Antibody (N-term) - Images**



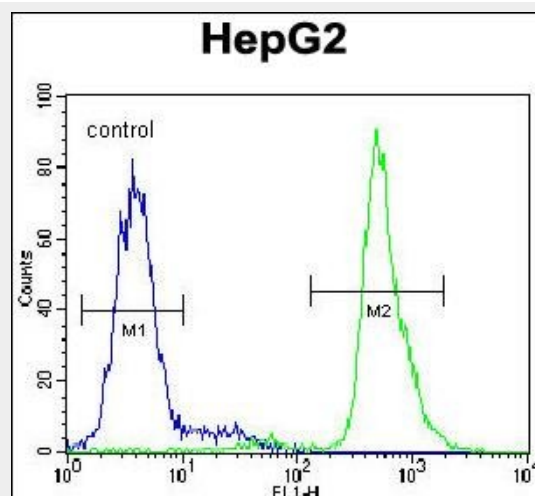
Confocal immunofluorescent analysis of SERPINI1 Antibody (N-term)(Cat#AP10388a) with HepG2 cell followed by Alexa Fluor® 488-conjugated goat anti-rabbit IgG (green). DAPI was used to stain the cell nuclear (blue).



Western blot analysis of lysate from SH-SY5Y cell line, using SERPINI1 Antibody (N-term)(Cat. #AP10388a). AP10388a was diluted at 1:1000 at each lane. A goat anti-rabbit IgG H&L(HRP) at 1:5000 dilution was used as the secondary antibody. Lysate at 35ug per lane.



SERPINI1 antibody (N-term) (Cat. #AP10388a) immunohistochemistry analysis in formalin fixed and paraffin embedded human brain tissue followed by peroxidase conjugation of the secondary antibody and DAB staining. This data demonstrates the use of the SERPINI1 antibody (N-term) for immunohistochemistry. Clinical relevance has not been evaluated.



SERPINI1 Antibody (N-term) (Cat. #AP10388a) flow cytometric analysis of HepG2 cells (right

histogram) compared to a negative control cell (left histogram). FITC-conjugated goat-anti-rabbit secondary antibodies were used for the analysis.

#### **SERPINI1 Antibody (N-term) - Background**

This gene encodes a member of the serpin superfamily of serine proteinase inhibitors. The protein is primarily secreted by axons in the brain, and preferentially reacts with and inhibits tissue-type plasminogen activator. It is thought to play a role in the regulation of axonal growth and the development of synaptic plasticity. Mutations in this gene result in familial encephalopathy with neuroserpin inclusion bodies (FENIB), which is a dominantly inherited form of familial encephalopathy and epilepsy characterized by the accumulation of mutant neuroserpin polymers. Multiple alternatively spliced variants, encoding the same protein, have been identified.

#### **SERPINI1 Antibody (N-term) - References**

- Takehara, S., et al. J. Mol. Biol. 403(5):751-762(2010)  
Han, S., et al. Hum. Immunol. 71(7):727-730(2010)  
Rajaraman, P., et al. Cancer Epidemiol. Biomarkers Prev. 19(5):1356-1361(2010)  
Davies, M.J., et al. J. Biol. Chem. 284(27):18202-18209(2009)  
Rajaraman, P., et al. Cancer Epidemiol. Biomarkers Prev. 18(5):1651-1658(2009)