

FAM46A Antibody (Center)
Affinity Purified Rabbit Polyclonal Antibody (Pab)
Catalog # AP10394c**Specification**

FAM46A Antibody (Center) - Product Information

Application	IHC-P, WB,E
Primary Accession	Q96IP4
Other Accession	NP_060103.2
Reactivity	Human
Host	Rabbit
Clonality	Polyclonal
Isotype	Rabbit IgG
Antigen Region	89-117

FAM46A Antibody (Center) - Additional Information**Gene ID** 55603**Other Names**

Protein FAM46A, HBV X-transactivated gene 11 protein, HBV XAg-transactivated protein 11, FAM46A, C6orf37, XTP11

Target/Specificity

This FAM46A antibody is generated from rabbits immunized with a KLH conjugated synthetic peptide between 89-117 amino acids from the Central region of human FAM46A.

Dilution

IHC-P~~1:10~50

WB~~1:1000

E~~Use at an assay dependent concentration.

Format

Purified polyclonal antibody supplied in PBS with 0.09% (W/V) sodium azide. This antibody is purified through a protein A column, followed by peptide affinity purification.

Storage

Maintain refrigerated at 2-8°C for up to 2 weeks. For long term storage store at -20°C in small aliquots to prevent freeze-thaw cycles.

Precautions

FAM46A Antibody (Center) is for research use only and not for use in diagnostic or therapeutic procedures.

FAM46A Antibody (Center) - Protein Information**Name** TENT5A ([HGNC:18345](#))

Function Cytoplasmic non-canonical poly(A) RNA polymerase that catalyzes the transfer of one adenosine molecule from an ATP to an mRNA poly(A) tail bearing a 3'-OH terminal group and participates in the cytoplasmic polyadenylation (PubMed:[33882302](#)). Polyadenylates mRNA encoding extracellular matrix constituents and other genes crucial for bone mineralization and during osteoblast mineralization, mainly focuses on ER-targeted mRNAs (By similarity).

Cellular Location

Cytoplasm {ECO:0000250|UniProtKB:D3Z5S8}.

Tissue Location

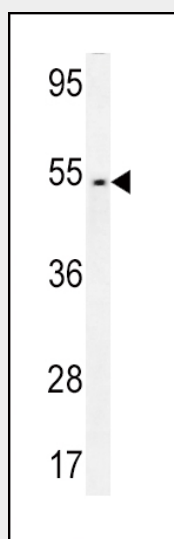
Widely expressed, with preferential expression observed in the retina compared to other ocular tissues (PubMed:12054608). Also expressed in osteoblasts (PubMed:29358272)

FAM46A Antibody (Center) - Protocols

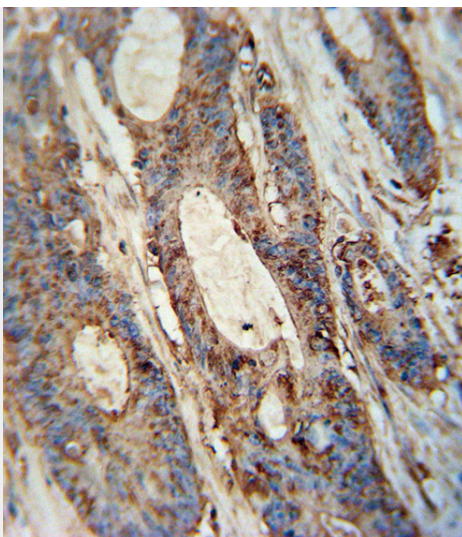
Provided below are standard protocols that you may find useful for product applications.

- [Western Blot](#)
- [Blocking Peptides](#)
- [Dot Blot](#)
- [Immunohistochemistry](#)
- [Immunofluorescence](#)
- [Immunoprecipitation](#)
- [Flow Cytometry](#)
- [Cell Culture](#)

FAM46A Antibody (Center) - Images



FAM46A Antibody (Center) (Cat. #AP10394c) western blot analysis in CEM cell line lysates (35ug/lane). This demonstrates the FAM46A antibody detected the FAM46A protein (arrow).



FAM46A antibody (Center) (Cat. #AP10394c) immunohistochemistry analysis in formalin fixed and paraffin embedded human colon carcinoma followed by peroxidase conjugation of the secondary antibody and DAB staining. This data demonstrates the use of the FAM46A antibody (Center) for immunohistochemistry. Clinical relevance has not been evaluated.

FAM46A Antibody (Center) - References

Barragan, I., et al. Ann. Hum. Genet. 72 (PT 1), 26-34 (2008) :
Lamesch, P., et al. Genomics 89(3):307-315(2007)
Cui, J., et al. Zhejiang Da Xue Xue Bao Yi Xue Ban 35(4):354-359(2006)
Cui, J., et al. Clin. Chim. Acta 368 (1-2), 155-159 (2006) :
Lim, J., et al. Cell 125(4):801-814(2006)