

COBL Antibody (N-term)
Affinity Purified Rabbit Polyclonal Antibody (Pab)
Catalog # AP10402a**Specification**

COBL Antibody (N-term) - Product Information

Application	WB,E
Primary Accession	O75128
Other Accession	D3ZUI5 , NP_056013.2
Reactivity	Human, Mouse
Predicted	Rat
Host	Rabbit
Clonality	Polyclonal
Isotype	Rabbit IgG
Antigen Region	184-211

COBL Antibody (N-term) - Additional Information**Gene ID** 23242**Other Names**

Protein cordon-bleu, COBL, KIAA0633

Target/Specificity

This COBL antibody is generated from rabbits immunized with a KLH conjugated synthetic peptide between 184-211 amino acids from the N-terminal region of human COBL.

Dilution

WB~~1:1000

E~~Use at an assay dependent concentration.

Format

Purified polyclonal antibody supplied in PBS with 0.09% (W/V) sodium azide. This antibody is purified through a protein A column, followed by peptide affinity purification.

Storage

Maintain refrigerated at 2-8°C for up to 2 weeks. For long term storage store at -20°C in small aliquots to prevent freeze-thaw cycles.

Precautions

COBL Antibody (N-term) is for research use only and not for use in diagnostic or therapeutic procedures.

COBL Antibody (N-term) - Protein Information**Name** COBL**Synonyms** KIAA0633

Function Plays an important role in the reorganization of the actin cytoskeleton. Regulates neuron morphogenesis and increases branching of axons and dendrites. Regulates dendrite branching in Purkinje cells (By similarity). Binds to and sequesters actin monomers (G actin). Nucleates actin polymerization by assembling three actin monomers in cross-filament orientation and thereby promotes growth of actin filaments at the barbed end. Can also mediate actin depolymerization at barbed ends and severing of actin filaments. Promotes formation of cell ruffles.

Cellular Location

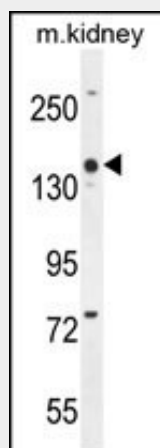
Cell membrane; Peripheral membrane protein; Cytoplasmic side. Cytoplasm, cytoskeleton. Cell projection, ruffle Cytoplasm. Note=Recruited to the cell membrane via interaction with PACSIN1. Colocalizes with the actin cytoskeleton Detected throughout the neuron cell body, as well as in axons and dendrites (By similarity).

COBL Antibody (N-term) - Protocols

Provided below are standard protocols that you may find useful for product applications.

- [Western Blot](#)
- [Blocking Peptides](#)
- [Dot Blot](#)
- [Immunohistochemistry](#)
- [Immunofluorescence](#)
- [Immunoprecipitation](#)
- [Flow Cytometry](#)
- [Cell Culture](#)

COBL Antibody (N-term) - Images



COBL Antibody (N-term) (Cat. #AP10402a) western blot analysis in mouse kidney tissue lysates (35ug/lane). This demonstrates the COBL antibody detected the COBL protein (arrow).

COBL Antibody (N-term) - References

Rose, J.E., et al. Mol. Med. 16 (7-8), 247-253 (2010) :
Trynka, G., et al. Gut 58(8):1078-1083(2009)
Barrett, J.C., et al. Nat. Genet. (2009) In press :
de Krom, M., et al. Biol. Psychiatry 65(7):625-630(2009)
Ballif, B.A., et al. Mol. Cell Proteomics 3(11):1093-1101(2004)