

KY Antibody (N-term)
Affinity Purified Rabbit Polyclonal Antibody (Pab)
Catalog # AP10410a**Specification**

KY Antibody (N-term) - Product Information

Application	WB,E
Primary Accession	Q8NBH2
Other Accession	NP_848649.3
Reactivity	Human, Mouse
Host	Rabbit
Clonality	Polyclonal
Isotype	Rabbit IgG
Calculated MW	75153
Antigen Region	104-133

KY Antibody (N-term) - Additional Information**Gene ID** 339855**Other Names**

Kyphoscoliosis peptidase, 34--, KY

Target/Specificity

This KY antibody is generated from rabbits immunized with a KLH conjugated synthetic peptide between 104-133 amino acids from the N-terminal region of human KY.

Dilution

WB~~1:1000

E~~Use at an assay dependent concentration.

Format

Purified polyclonal antibody supplied in PBS with 0.09% (W/V) sodium azide. This antibody is purified through a protein A column, followed by peptide affinity purification.

Storage

Maintain refrigerated at 2-8°C for up to 2 weeks. For long term storage store at -20°C in small aliquots to prevent freeze-thaw cycles.

Precautions

KY Antibody (N-term) is for research use only and not for use in diagnostic or therapeutic procedures.

KY Antibody (N-term) - Protein Information**Name** KY ([HGNC:26576](#))**Function** Probable cytoskeleton-associated protease required for normal muscle growth. Involved

in function, maturation and stabilization of the neuromuscular junction. May act by cleaving muscle-specific proteins such as FLNC (By similarity).

Cellular Location

Cytoplasm, cytoskeleton. Cytoplasm, myofibril, sarcomere, Z line

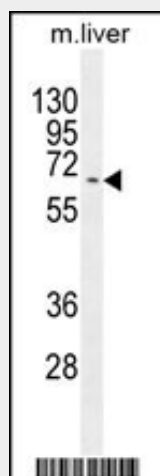
Tissue Location

Highly expressed in skeletal muscle.

KY Antibody (N-term) - Protocols

Provided below are standard protocols that you may find useful for product applications.

- [Western Blot](#)
- [Blocking Peptides](#)
- [Dot Blot](#)
- [Immunohistochemistry](#)
- [Immunofluorescence](#)
- [Immunoprecipitation](#)
- [Flow Cytometry](#)
- [Cell Culture](#)

KY Antibody (N-term) - Images

KY Antibody (N-term) (Cat. #AP10410a) western blot analysis in mouse liver tissue lysates (35ug/lane). This demonstrates the KY antibody detected the KY protein (arrow).

KY Antibody (N-term) - References

Rose, J. Phd, et al. Mol. Med. (2010) In press :
Beatham, J., et al. Hum. Mol. Genet. 13(22):2863-2874(2004)