

SYCE2 Antibody (N-term)
Affinity Purified Rabbit Polyclonal Antibody (Pab)
Catalog # AP10413a

Specification

SYCE2 Antibody (N-term) - Product Information

Application	FC, WB,E
Primary Accession	O6PIF2
Other Accession	NP_001099048.1
Reactivity	Human
Host	Rabbit
Clonality	Polyclonal
Isotype	Rabbit IgG
Calculated MW	24690
Antigen Region	1-30

SYCE2 Antibody (N-term) - Additional Information

Gene ID 256126

Other Names

Synaptonemal complex central element protein 2, Central element synaptonemal complex protein 1, SYCE2, CESC1

Target/Specificity

This SYCE2 antibody is generated from rabbits immunized with a KLH conjugated synthetic peptide between 1-30 amino acids from the N-terminal region of human SYCE2.

Dilution

FC~~1:10~50

WB~~1:1000

E~~Use at an assay dependent concentration.

Format

Purified polyclonal antibody supplied in PBS with 0.09% (W/V) sodium azide. This antibody is purified through a protein A column, followed by peptide affinity purification.

Storage

Maintain refrigerated at 2-8°C for up to 2 weeks. For long term storage store at -20°C in small aliquots to prevent freeze-thaw cycles.

Precautions

SYCE2 Antibody (N-term) is for research use only and not for use in diagnostic or therapeutic procedures.

SYCE2 Antibody (N-term) - Protein Information

Name SYCE2

Synonyms CESC1 {ECO:0000250|UniProtKB:Q505B8}

Function Major component of the transverse central element of synaptonemal complexes (SCS), formed between homologous chromosomes during meiotic prophase. Requires SYCP1 in order to be incorporated into the central element. May have a role in the synaptonemal complex assembly, stabilization and recombination (By similarity).

Cellular Location

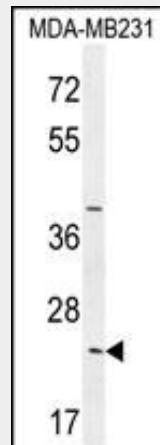
Nucleus {ECO:0000250|UniProtKB:Q505B8}. Chromosome {ECO:0000250|UniProtKB:Q505B8}. Note=Associates with chromatin. In prophase I stage of meiosis, localizes in the transverse central elements of the central region between lateral elements of the synaptonemal complexes. Found only where the chromosome cores are synapsed. Colocalizes with SYCE1 in the central elements (By similarity). {ECO:0000250|UniProtKB:Q505B8}

SYCE2 Antibody (N-term) - Protocols

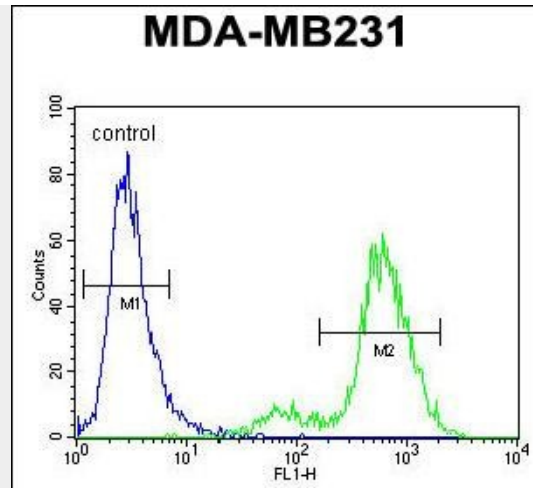
Provided below are standard protocols that you may find useful for product applications.

- [Western Blot](#)
- [Blocking Peptides](#)
- [Dot Blot](#)
- [Immunohistochemistry](#)
- [Immunofluorescence](#)
- [Immunoprecipitation](#)
- [Flow Cytometry](#)
- [Cell Culture](#)

SYCE2 Antibody (N-term) - Images



SYCE2 Antibody (N-term) (Cat. #AP10413a) western blot analysis in MDA-MB231 cell line lysates (35ug/lane). This demonstrates the SYCE2 antibody detected the SYCE2 protein (arrow).



SYCE2 Antibody (N-term) (Cat. #AP10413a) flow cytometric analysis of MDA-MB231 cells (right histogram) compared to a negative control cell (left histogram). FITC-conjugated goat-anti-rabbit secondary antibodies were used for the analysis.

SYCE2 Antibody (N-term) - References

- Bailey, S.D., et al. Diabetes Care (2010) In press :
Talmud, P.J., et al. Am. J. Hum. Genet. 85(5):628-642(2009)
Bolcun-Filas, E., et al. J. Cell Biol. 176(6):741-747(2007)
Costa, Y., et al. J. Cell. Sci. 118 (PT 12), 2755-2762 (2005) :
Grimwood, J., et al. Nature 428(6982):529-535(2004)