

LHFPL5 Antibody (C-term)
Affinity Purified Rabbit Polyclonal Antibody (Pab)
Catalog # AP10415b**Specification**

LHFPL5 Antibody (C-term) - Product Information

Application	WB,E
Primary Accession	Q8TAF8
Other Accession	Q5PPI7 , Q4KL25 , NP_872354.1
Reactivity	Human, Mouse
Predicted	Rat
Host	Rabbit
Clonality	Polyclonal
Isotype	Rabbit IgG
Calculated MW	24201
Antigen Region	186-214

LHFPL5 Antibody (C-term) - Additional Information**Gene ID** 222662**Other Names**

Tetraspan membrane protein of hair cell stereocilia, Lipoma HMGIC fusion partner-like 5 protein, LHFPL5, TMHS

Target/Specificity

This LHFPL5 antibody is generated from rabbits immunized with a KLH conjugated synthetic peptide between 186-214 amino acids from the C-terminal region of human LHFPL5.

Dilution

WB~~1:1000

E~~Use at an assay dependent concentration.

Format

Purified polyclonal antibody supplied in PBS with 0.09% (W/V) sodium azide. This antibody is purified through a protein A column, followed by peptide affinity purification.

Storage

Maintain refrigerated at 2-8°C for up to 2 weeks. For long term storage store at -20°C in small aliquots to prevent freeze-thaw cycles.

Precautions

LHFPL5 Antibody (C-term) is for research use only and not for use in diagnostic or therapeutic procedures.

LHFPL5 Antibody (C-term) - Protein Information**Name** LHFPL5 ([HGNC:21253](#))

Function Auxiliary subunit of the mechanotransducer (MET) non-specific cation channel complex located at the tips of the shorter stereocilia of cochlear hair cells and that mediates sensory transduction in the auditory system. The MET complex is composed of two dimeric pore-forming ion-conducting transmembrane TMC (TMC1 or TMC2) subunits, and aided by several auxiliary proteins including LHFPL5, TMIE, CIB2/3 and TOMT, and the tip-link PCDH15. Functionally couples PCDH15 to the transduction channel.

Cellular Location

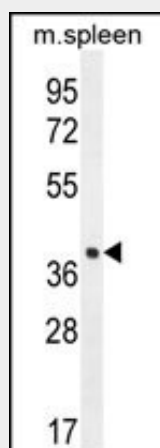
Cell membrane {ECO:0000250|UniProtKB:Q4KL25}; Multi-pass membrane protein. Note=Efficient localization to the plasma membrane requires the presence of PCDH15 {ECO:0000250|UniProtKB:Q4KL25}

LHFPL5 Antibody (C-term) - Protocols

Provided below are standard protocols that you may find useful for product applications.

- [Western Blot](#)
- [Blocking Peptides](#)
- [Dot Blot](#)
- [Immunohistochemistry](#)
- [Immunofluorescence](#)
- [Immunoprecipitation](#)
- [Flow Cytometry](#)
- [Cell Culture](#)

LHFPL5 Antibody (C-term) - Images



LHFPL5 Antibody (C-term) (Cat. #AP10415b) western blot analysis in mouse spleen tissue lysates (35ug/lane). This demonstrates the LHFPL5 antibody detected the LHFPL5 protein (arrow).

LHFPL5 Antibody (C-term) - Background

This gene is a member of the lipoma HMGIC fusion partner (LHFP) gene family, which is a subset of the superfamily of tetraspan transmembrane protein encoding genes. Mutations in this gene result in deafness in humans, and a mutation in a similar gene in mice results in deafness and vestibular dysfunction with severe degeneration of the organ of Corti. It is proposed to function in hair bundle morphogenesis.

LHFPL5 Antibody (C-term) - References

Cosetti, M., et al. Ann. Otol. Rhinol. Laryngol. 117(11):827-833(2008)

Shabbir, M.I., et al. J. Med. Genet. 43(8):634-640(2006)

Longo-Guess, C.M., et al. Proc. Natl. Acad. Sci. U.S.A. 102(22):7894-7899(2005)