

PAX1 Antibody (C-term)
Affinity Purified Rabbit Polyclonal Antibody (Pab)
Catalog # AP10458b

Specification

PAX1 Antibody (C-term) - Product Information

Application	WB, FC,E
Primary Accession	P15863
Other Accession	NP_006183.2
Reactivity	Human
Host	Rabbit
Clonality	Polyclonal
Isotype	Rabbit IgG
Calculated MW	55499
Antigen Region	443-471

PAX1 Antibody (C-term) - Additional Information

Gene ID 5075

Other Names

Paired box protein Pax-1, HuP48, PAX1, HUP48

Target/Specificity

This PAX1 antibody is generated from rabbits immunized with a KLH conjugated synthetic peptide between 443-471 amino acids from the C-terminal region of human PAX1.

Dilution

WB~~1:1000

FC~~1:10~50

Format

Purified polyclonal antibody supplied in PBS with 0.09% (W/V) sodium azide. This antibody is purified through a protein A column, followed by peptide affinity purification.

Storage

Maintain refrigerated at 2-8°C for up to 2 weeks. For long term storage store at -20°C in small aliquots to prevent freeze-thaw cycles.

Precautions

PAX1 Antibody (C-term) is for research use only and not for use in diagnostic or therapeutic procedures.

PAX1 Antibody (C-term) - Protein Information

Name PAX1

Synonyms HUP48

Function This protein is a transcriptional activator. It may play a role in the formation of segmented structures of the embryo. May play an important role in the normal development of the vertebral column (By similarity).

Cellular Location

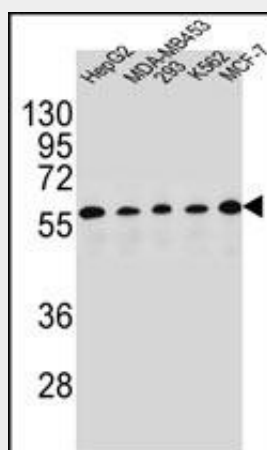
Nucleus.

PAX1 Antibody (C-term) - Protocols

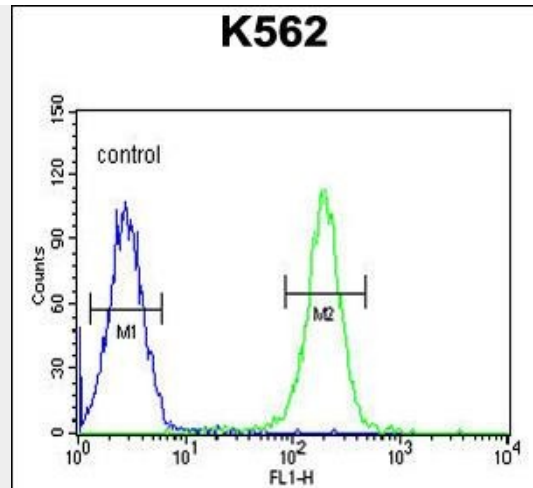
Provided below are standard protocols that you may find useful for product applications.

- [Western Blot](#)
- [Blocking Peptides](#)
- [Dot Blot](#)
- [Immunohistochemistry](#)
- [Immunofluorescence](#)
- [Immunoprecipitation](#)
- [Flow Cytometry](#)
- [Cell Culture](#)

PAX1 Antibody (C-term) - Images



PAX1 Antibody (C-term) (Cat. #AP10458b) western blot analysis in HepG2,MDA-MB453,293,K562,MCF-7 cell line lysates (35ug/lane).This demonstrates the PAX1 antibody detected the PAX1 protein (arrow).



PAX1 Antibody (C-term) (Cat. #AP10458b) flow cytometric analysis of K562 cells (right histogram) compared to a negative control cell (left histogram). FITC-conjugated goat-anti-rabbit secondary antibodies were used for the analysis.

PAX1 Antibody (C-term) - Background

The PAX genes, including PAX1, are a highly conserved family of developmental control genes that encode transcription factors and have been shown to play a role in pattern formation during embryogenesis in vertebrates (McGaughan et al., 2003 [PubMed 12774041]). See PAX7 (MIM 167410) for a discussion of paired box domain genes.

PAX1 Antibody (C-term) - References

Huang, T.H., et al. Int. J. Gynecol. Cancer 20(4):513-519(2010)
Yerges, L.M., et al. J. Bone Miner. Res. 24(12):2039-2049(2009)
Hillmer, A.M., et al. Nat. Genet. 40(11):1279-1281(2008)
Richards, J.B., et al. Nat. Genet. 40(11):1282-1284(2008)
Fei, Q., et al. Zhonghua Yi Xue Za Zhi 88(37):2597-2602(2008)