

**RABGAP1 Antibody (N-term)**  
**Affinity Purified Rabbit Polyclonal Antibody (Pab)**  
**Catalog # AP10460a****Specification**

---

**RABGAP1 Antibody (N-term) - Product Information**

Application	FC, WB,E
Primary Accession	<a href="#">O9Y3P9</a>
Other Accession	<a href="#">A2AWA9</a> , <a href="#">NP_036329.3</a>
Reactivity	Human
Predicted	Mouse
Host	Rabbit
Clonality	Polyclonal
Isotype	Rabbit IgG
Calculated MW	121737
Antigen Region	14-43

**RABGAP1 Antibody (N-term) - Additional Information****Gene ID** 23637**Other Names**

Rab GTPase-activating protein 1, GAP and centrosome-associated protein, Rab6 GTPase-activating protein GAPCenA, RABGAP1

**Target/Specificity**

This RABGAP1 antibody is generated from rabbits immunized with a KLH conjugated synthetic peptide between 14-43 amino acids from the N-terminal region of human RABGAP1.

**Dilution**

FC~~1:10~50

WB~~1:1000

E~~Use at an assay dependent concentration.

**Format**

Purified polyclonal antibody supplied in PBS with 0.09% (W/V) sodium azide. This antibody is purified through a protein A column, followed by peptide affinity purification.

**Storage**

Maintain refrigerated at 2-8°C for up to 2 weeks. For long term storage store at -20°C in small aliquots to prevent freeze-thaw cycles.

**Precautions**

RABGAP1 Antibody (N-term) is for research use only and not for use in diagnostic or therapeutic procedures.

**RABGAP1 Antibody (N-term) - Protein Information**

**Name** RABGAP1

**Function** May act as a GTPase-activating protein of RAB6A. May play a role in microtubule nucleation by centrosome. May participate in a RAB6A-mediated pathway involved in the metaphase-anaphase transition.

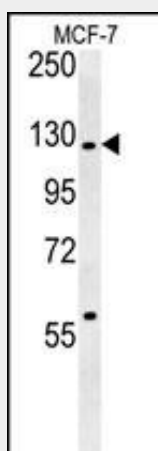
**Cellular Location**

Cytoplasm, cytosol. Cytoplasm, cytoskeleton, microtubule organizing center, centrosome. Note=Predominantly cytosolic but also associated with the centrosome.

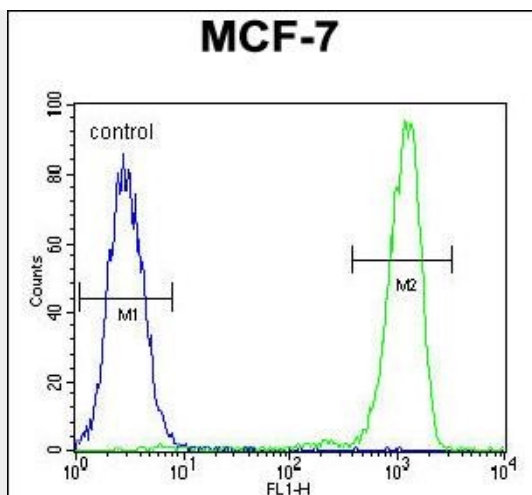
**RABGAP1 Antibody (N-term) - Protocols**

Provided below are standard protocols that you may find useful for product applications.

- [Western Blot](#)
- [Blocking Peptides](#)
- [Dot Blot](#)
- [Immunohistochemistry](#)
- [Immunofluorescence](#)
- [Immunoprecipitation](#)
- [Flow Cytometry](#)
- [Cell Culture](#)

**RABGAP1 Antibody (N-term) - Images**

RABGAP1 Antibody (N-term) (Cat. #AP10460a) western blot analysis in MCF-7 cell line lysates (35ug/lane). This demonstrates the RABGAP1 antibody detected the RABGAP1 protein (arrow).



RABGAP1 Antibody (N-term) (Cat. #AP10460a) flow cytometric analysis of MCF-7 cells (right histogram) compared to a negative control cell (left histogram). FITC-conjugated goat-anti-rabbit secondary antibodies were used for the analysis.

#### **RABGAP1 Antibody (N-term) - Background**

RABGAP1 may act as a GTPase-activating protein of RAB6A and play a role in microtubule nucleation by centrosome. It may participate in a RAB6A-mediated pathway involved in the metaphase-anaphase transition.

#### **RABGAP1 Antibody (N-term) - References**

Rose, J.E., et al. Mol. Med. 16 (7-8), 247-253 (2010) :  
Ishibashi, K., et al. Genes Cells 14(1):41-52(2009)  
Echard, A., et al. Mol. Biol. Cell 11(11):3819-3833(2000)  
Opdam, F.J., et al. J. Cell. Sci. 113 (PT 15), 2725-2735 (2000) :  
Cuif, M.H., et al. EMBO J. 18(7):1772-1782(1999)