

ADORA2A Antibody (Center)
Affinity Purified Rabbit Polyclonal Antibody (Pab)
Catalog # AP10467C**Specification**

ADORA2A Antibody (Center) - Product Information

Application	WB, IF, E
Primary Accession	P29274
Other Accession	P30543 , Q60613 , NP_000666.2
Reactivity	Human
Predicted	Mouse, Rat
Host	Rabbit
Clonality	Polyclonal
Isotype	Rabbit IgG
Antigen Region	273-301

ADORA2A Antibody (Center) - Additional Information**Gene ID** 135**Other Names**

Adenosine receptor A2a, ADORA2A, ADORA2

Target/Specificity

This ADORA2A antibody is generated from rabbits immunized with a KLH conjugated synthetic peptide between 273-301 amino acids from the Central region of human ADORA2A.

Dilution

WB~~1:1000

IF~~1:10~50

E~~Use at an assay dependent concentration.

Format

Purified polyclonal antibody supplied in PBS with 0.09% (W/V) sodium azide. This antibody is purified through a protein A column, followed by peptide affinity purification.

Storage

Maintain refrigerated at 2-8°C for up to 2 weeks. For long term storage store at -20°C in small aliquots to prevent freeze-thaw cycles.

Precautions

ADORA2A Antibody (Center) is for research use only and not for use in diagnostic or therapeutic procedures.

ADORA2A Antibody (Center) - Protein Information**Name** ADORA2A

Synonyms ADORA2

Function Receptor for adenosine (By similarity). The activity of this receptor is mediated by G proteins which activate adenylyl cyclase (By similarity).

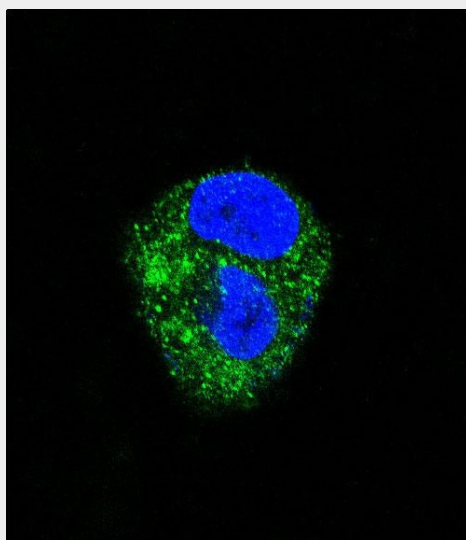
Cellular Location

Cell membrane {ECO:0000250|UniProtKB:P30543}; Multi-pass membrane protein {ECO:0000250|UniProtKB:P30543} Note=Colocalizes with GAS2L2 at neuronal processes {ECO:0000250|UniProtKB:P30543}

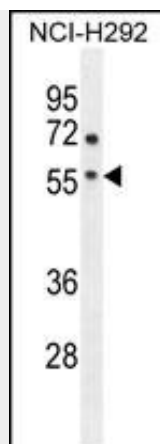
ADORA2A Antibody (Center) - Protocols

Provided below are standard protocols that you may find useful for product applications.

- [Western Blot](#)
- [Blocking Peptides](#)
- [Dot Blot](#)
- [Immunohistochemistry](#)
- [Immunofluorescence](#)
- [Immunoprecipitation](#)
- [Flow Cytometry](#)
- [Cell Culture](#)

ADORA2A Antibody (Center) - Images

Confocal immunofluorescent analysis of ADORA2A Antibody (Center) (Cat#AP10467c) with HepG2 cell followed by Alexa Fluor 488-conjugated goat anti-rabbit IgG (green). DAPI was used to stain the cell nuclear (blue).



ADORA2A Antibody (Center) (Cat. #AP10467c) western blot analysis in NCI-H292 cell line lysates (35ug/lane). This demonstrates the ADORA2A antibody detected the ADORA2A protein (arrow).

ADORA2A Antibody (Center) - Background

ADORA2A is a protein which is one of several receptor subtypes for adenosine. The activity of the encoded protein, a G-protein coupled receptor family member, is mediated by G proteins which activate adenylyl cyclase. This protein is abundant in basal ganglia, vasculature and platelets and it is a major target of caffeine.

ADORA2A Antibody (Center) - References

Buira, S.P., et al. J. Neurochem. 115(1):283-295(2010)
Bailey, S.D., et al. Diabetes Care 33(10):2250-2253(2010)
Rogers, P.J., et al. Neuropsychopharmacology 35(9):1973-1983(2010)
Tebano, M.T., et al. ScientificWorldJournal 10, 1768-1782 (2010) :
Kobayashi, H., et al. Behav Brain Funct 6, 50 (2010) :