

**COL19A1 Antibody (N-term)**  
**Affinity Purified Rabbit Polyclonal Antibody (Pab)**  
**Catalog # AP10475A****Specification**

---

**COL19A1 Antibody (N-term) - Product Information**

Application	IHC-P, WB,E
Primary Accession	<a href="#">Q14993</a>
Other Accession	<a href="#">NP_001849.2</a>
Reactivity	Human, Mouse
Host	Rabbit
Clonality	Polyclonal
Isotype	Rabbit IgG
Calculated MW	115221
Antigen Region	144-170

**COL19A1 Antibody (N-term) - Additional Information****Gene ID** 1310**Other Names**

Collagen alpha-1(XIX) chain, Collagen alpha-1(Y) chain, COL19A1

**Target/Specificity**

This COL19A1 antibody is generated from rabbits immunized with a KLH conjugated synthetic peptide between 144-170 amino acids from the N-terminal region of human COL19A1.

**Dilution**

IHC-P~~1:50~100

WB~~1:1000

E~~Use at an assay dependent concentration.

**Format**

Purified polyclonal antibody supplied in PBS with 0.09% (W/V) sodium azide. This antibody is purified through a protein A column, followed by peptide affinity purification.

**Storage**

Maintain refrigerated at 2-8°C for up to 2 weeks. For long term storage store at -20°C in small aliquots to prevent freeze-thaw cycles.

**Precautions**

COL19A1 Antibody (N-term) is for research use only and not for use in diagnostic or therapeutic procedures.

**COL19A1 Antibody (N-term) - Protein Information****Name** COL19A1

**Function** May act as a cross-bridge between fibrils and other extracellular matrix molecules. Involved in skeletal myogenesis in the developing esophagus. May play a role in organization of the pericellular matrix or the sphinteric smooth muscle.

**Cellular Location**

Secreted, extracellular space, extracellular matrix

**Tissue Location**

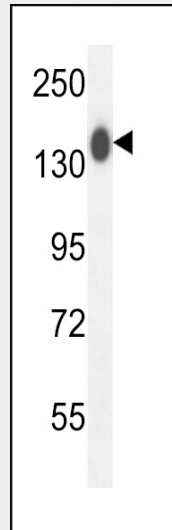
Localized to vascular, neuronal, mesenchymal, and some epithelial basement membrane zones in umbilical cord

**COL19A1 Antibody (N-term) - Protocols**

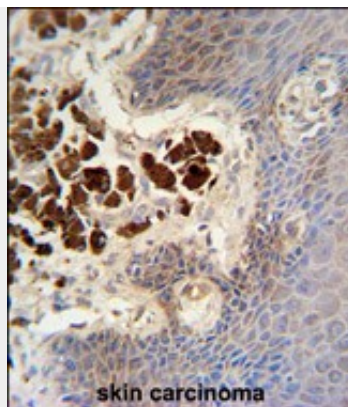
Provided below are standard protocols that you may find useful for product applications.

- [Western Blot](#)
- [Blocking Peptides](#)
- [Dot Blot](#)
- [Immunohistochemistry](#)
- [Immunofluorescence](#)
- [Immunoprecipitation](#)
- [Flow Cytometry](#)
- [Cell Culture](#)

**COL19A1 Antibody (N-term) - Images**



COL19A1 Antibody (N-term) (Cat. #AP10475a) western blot analysis in mouse kidney tissue lysates (35ug/lane). This demonstrates the COL19A1 antibody detected the COL19A1 protein (arrow).



COL19A1 antibody (N-term) (Cat. #AP10475a) immunohistochemistry analysis in formalin fixed and paraffin embedded human skin carcinoma followed by peroxidase conjugation of the secondary antibody and DAB staining. This data demonstrates the use of the COL19A1 antibody (N-term) for immunohistochemistry. Clinical relevance has not been evaluated.

#### **COL19A1 Antibody (N-term) - Background**

COL19A1 encodes the alpha chain of type XIX collagen, a member of the FACIT collagen family (fibril-associated collagens with interrupted helices). Although the function of this collagen is not known, other members of this collagen family are found in association with fibril-forming collagens such as type I and II, and serve to maintain the integrity of the extracellular matrix. The transcript produced from this gene has an unusually large 3' UTR which has not been completely sequenced.

#### **COL19A1 Antibody (N-term) - References**

Rose, J.E., et al. Mol. Med. 16 (7-8), 247-253 (2010) :  
Barber, M.J., et al. PLoS ONE 5 (3), E9763 (2010) :  
Boudko, S.P., et al. J. Biol. Chem. 283(49):34345-34351(2008)  
Kapyla, J., et al. J. Biol. Chem. 279(49):51677-51687(2004)  
Mungall, A.J., et al. Nature 425(6960):805-811(2003)