

**GNA15 Antibody (C-term)**  
**Affinity Purified Rabbit Polyclonal Antibody (Pab)**  
**Catalog # AP10483b**

**Specification**

---

**GNA15 Antibody (C-term) - Product Information**

Application	WB,E
Primary Accession	<a href="#">P30679</a>
Other Accession	<a href="#">O9TU29</a> , <a href="#">NP_002059.2</a>
Reactivity	Human, Mouse
Predicted	Rabbit
Host	Rabbit
Clonality	Polyclonal
Isotype	Rabbit IgG
Calculated MW	43508
Antigen Region	333-361

**GNA15 Antibody (C-term) - Additional Information**

**Gene ID** 2769

**Other Names**

Guanine nucleotide-binding protein subunit alpha-15, G alpha-15, G-protein subunit alpha-15, Epididymis tissue protein Li 17E, Guanine nucleotide-binding protein subunit alpha-16, G alpha-16, G-protein subunit alpha-16, GNA15, GNA16

**Target/Specificity**

This GNA15 antibody is generated from rabbits immunized with a KLH conjugated synthetic peptide between 333-361 amino acids from the C-terminal region of human GNA15.

**Dilution**

WB~~1:1000

E~~Use at an assay dependent concentration.

**Format**

Purified polyclonal antibody supplied in PBS with 0.09% (W/V) sodium azide. This antibody is purified through a protein A column, followed by peptide affinity purification.

**Storage**

Maintain refrigerated at 2-8°C for up to 2 weeks. For long term storage store at -20°C in small aliquots to prevent freeze-thaw cycles.

**Precautions**

GNA15 Antibody (C-term) is for research use only and not for use in diagnostic or therapeutic procedures.

**GNA15 Antibody (C-term) - Protein Information**

**Name** GNA15

**Synonyms** GNA16

**Function** Guanine nucleotide-binding proteins (G proteins) are involved as modulators or transducers in various transmembrane signaling systems.

**Tissue Location**

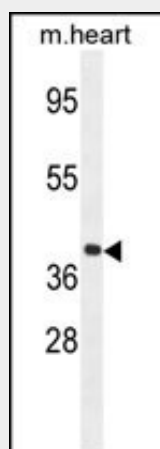
Specifically expressed in hematopoietic cells. Expressed in epididymis (at protein level)

**GNA15 Antibody (C-term) - Protocols**

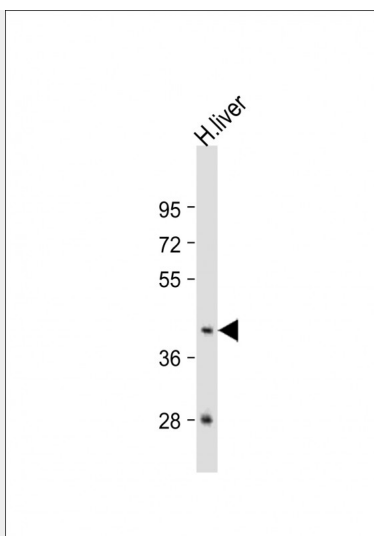
Provided below are standard protocols that you may find useful for product applications.

- [Western Blot](#)
- [Blocking Peptides](#)
- [Dot Blot](#)
- [Immunohistochemistry](#)
- [Immunofluorescence](#)
- [Immunoprecipitation](#)
- [Flow Cytometry](#)
- [Cell Culture](#)

**GNA15 Antibody (C-term) - Images**



GNA15 Antibody (C-term) (Cat. #AP10483b) western blot analysis in mouse heart tissue lysates (35ug/lane). This demonstrates the GNA15 antibody detected the GNA15 protein (arrow).



Anti-GNA15 Antibody (C-term) at 1:1000 dilution + human liver lysate Lysates/proteins at 20  $\mu$ g per lane. Secondary Goat Anti-Rabbit IgG, (H+L), Peroxidase conjugated at 1/10000 dilution. Predicted band size : 44 kDa Blocking/Dilution buffer: 5% NFDM/TBST.

#### **GNA15 Antibody (C-term) - Background**

Guanine nucleotide-binding proteins (G proteins) are involved as modulators or transducers in various transmembrane signaling systems.

#### **GNA15 Antibody (C-term) - References**

- Smith, N.L., et al. Circ Cardiovasc Genet 3(3):256-266(2010)
- Lee, M.M., et al. J. Leukoc. Biol. 86(6):1319-1329(2009)
- Lo, R.K., et al. Cell. Signal. 20(11):2095-2106(2008)
- Luttrell, L.M. Mol. Biotechnol. 39(3):239-264(2008)
- Lamesch, P., et al. Genomics 89(3):307-315(2007)