

**COL5A1 Antibody (N-term)**  
**Affinity Purified Rabbit Polyclonal Antibody (Pab)**  
**Catalog # AP10487A****Specification**

---

**COL5A1 Antibody (N-term) - Product Information**

Application	IHC-P-Leica, WB,E
Primary Accession	<a href="#">P20908</a>
Other Accession	<a href="#">NP_000084.3</a>
Reactivity	Human, Mouse
Host	Rabbit
Clonality	Polyclonal
Isotype	Rabbit IgG
Antigen Region	54-82

**COL5A1 Antibody (N-term) - Additional Information****Gene ID** 1289**Other Names**

Collagen alpha-1(V) chain, COL5A1

**Target/Specificity**

This COL5A1 antibody is generated from rabbits immunized with a KLH conjugated synthetic peptide between 54-82 amino acids from the N-terminal region of human COL5A1.

**Dilution**

IHC-P-Leica~~1:500

WB~~1:2000

E~~Use at an assay dependent concentration.

**Format**

Purified polyclonal antibody supplied in PBS with 0.09% (W/V) sodium azide. This antibody is purified through a protein A column, followed by peptide affinity purification.

**Storage**

Maintain refrigerated at 2-8°C for up to 2 weeks. For long term storage store at -20°C in small aliquots to prevent freeze-thaw cycles.

**Precautions**

COL5A1 Antibody (N-term) is for research use only and not for use in diagnostic or therapeutic procedures.

**COL5A1 Antibody (N-term) - Protein Information****Name** COL5A1**Function** Type V collagen is a member of group I collagen (fibrillar forming collagen). It is a minor

connective tissue component of nearly ubiquitous distribution. Type V collagen binds to DNA, heparan sulfate, thrombospondin, heparin, and insulin.

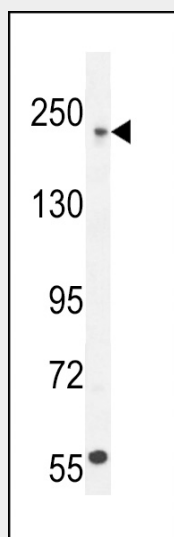
**Cellular Location**

Secreted, extracellular space, extracellular matrix {ECO:0000255|PROSITE-ProRule:PRU00793}

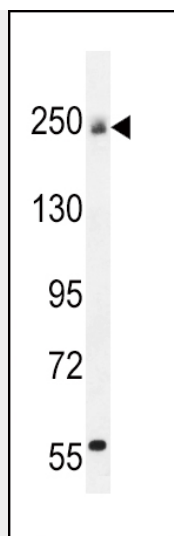
**COL5A1 Antibody (N-term) - Protocols**

Provided below are standard protocols that you may find useful for product applications.

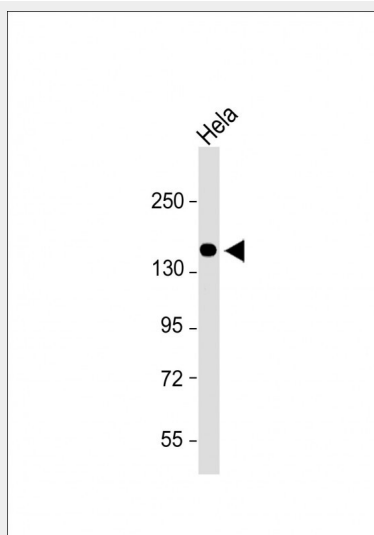
- [Western Blot](#)
- [Blocking Peptides](#)
- [Dot Blot](#)
- [Immunohistochemistry](#)
- [Immunofluorescence](#)
- [Immunoprecipitation](#)
- [Flow Cytometry](#)
- [Cell Culture](#)

**COL5A1 Antibody (N-term) - Images**

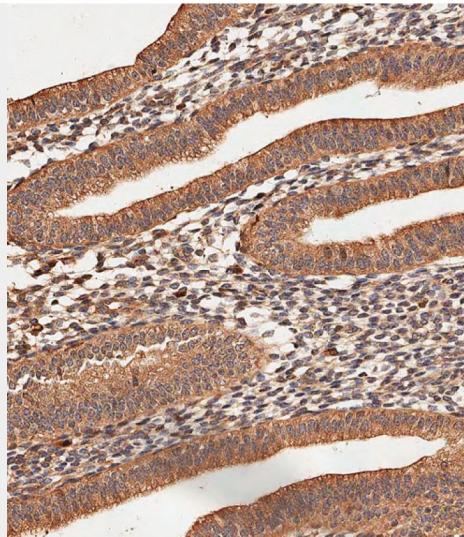
COL5A1 Antibody (N-term) (Cat. #AP10487a) western blot analysis in U251 cell line lysates (35ug/lane). This demonstrates the COL5A1 antibody detected the COL5A1 protein (arrow).



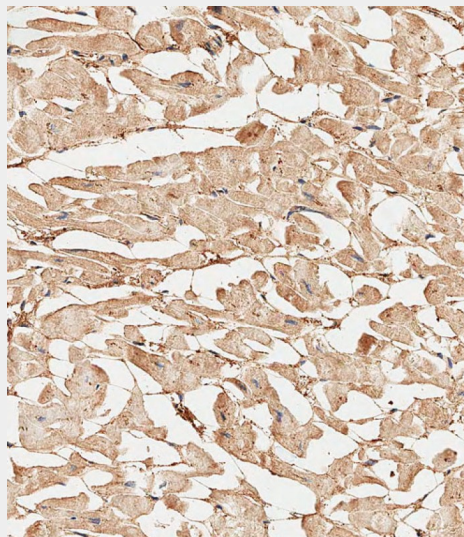
COL5A1 Antibody (N-term) (Cat. #AP10487a) western blot analysis in mouse bladder tissue lysates (35ug/lane). This demonstrates the COL5A1 antibody detected the COL5A1 protein (arrow).



Anti-COL5A1 Antibody (N-term) at 1:2000 dilution + HeLa whole cell lysate Lysates/proteins at 20 ug per lane. Secondary Goat Anti-Rabbit IgG, (H+L), Peroxidase conjugated at 1/10000 dilution. Predicted band size : 184 kDa Blocking/Dilution buffer: 5% NFDM/TBST.



Immunohistochemical analysis of paraffin-embedded Human uterus tissue using AP10487A performed on the Leica® BOND RXm. Tissue was fixed with formaldehyde at room temperature, antigen retrieval was by heat mediation with a EDTA buffer (pH9. 0). Samples were incubated with primary antibody(1:500) for 1 hours at room temperature. A undiluted biotinylated CRF Anti-Polyvalent HRP Polymer antibody was used as the secondary antibody.



Immunohistochemical analysis of paraffin-embedded Human heart tissue using AP10487A performed on the Leica® BOND RXm. Tissue was fixed with formaldehyde at room temperature, antigen retrieval was by heat mediation with a EDTA buffer (pH9. 0). Samples were incubated with primary antibody(1:500) for 1 hours at room temperature. A undiluted biotinylated CRF Anti-Polyvalent HRP Polymer antibody was used as the secondary antibody.

### **COL5A1 Antibody (N-term) - Background**

COL5A1 encodes an alpha chain for one of the low abundance fibrillar collagens. Fibrillar collagen molecules are trimers that can be composed of one or more types of alpha chains. Type V collagen is found in tissues containing type I collagen and appears to regulate the assembly of heterotypic fibers composed of both type I and type V collagen. COL5A1 product is closely related to type XI collagen and it is possible that the collagen chains of types V and XI constitute a single collagen type with

tissue-specific chain combinations. Mutations in this gene are associated with Ehlers-Danlos syndrome, types I and II. [provided by RefSeq].

#### **COL5A1 Antibody (N-term) - References**

Vitart, V., et al. Hum. Mol. Genet. 19(21):4304-4311(2010)  
Romero, R., et al. Am. J. Obstet. Gynecol. 203 (4), 361 (2010) :  
Bailey, S.D., et al. Diabetes Care 33(10):2250-2253(2010)  
Posthumus, M., et al. Med Sci Sports Exerc (2010) In press :  
Borck, G., et al. Am. J. Med. Genet. A 152A (8), 2090-2093 (2010) :

#### **COL5A1 Antibody (N-term) - Citations**

- [COL5A1 Serves as a Biomarker of Tumor Progression and Poor Prognosis and May Be a Potential Therapeutic Target in Gliomas](#)