

PRSS3 Antibody (N-term)
Affinity Purified Rabbit Polyclonal Antibody (Pab)
Catalog # AP10489a

Specification

PRSS3 Antibody (N-term) - Product Information

Application	FC, WB, IHC-P,E
Primary Accession	P35030-1
Reactivity	Human
Host	Rabbit
Clonality	Polyclonal
Isotype	Rabbit IgG
Antigen Region	13-40

PRSS3 Antibody (N-term) - Additional Information

Other Names

Trypsin-3, Brain trypsinogen, Mesotrypsinogen, Serine protease 3, Serine protease 4, Trypsin III, Trypsin IV, PRSS3, PRSS4, TRY3, TRY4

Target/Specificity

This PRSS3 antibody is generated from rabbits immunized with a KLH conjugated synthetic peptide between 13-40 amino acids from the N-terminal region of human PRSS3.

Dilution

FC~~1:10~50
WB~~1:1000
IHC-P~~1:50~100
E~~Use at an assay dependent concentration.

Format

Purified polyclonal antibody supplied in PBS with 0.09% (W/V) sodium azide. This antibody is purified through a protein A column, followed by peptide affinity purification.

Storage

Maintain refrigerated at 2-8°C for up to 2 weeks. For long term storage store at -20°C in small aliquots to prevent freeze-thaw cycles.

Precautions

PRSS3 Antibody (N-term) is for research use only and not for use in diagnostic or therapeutic procedures.

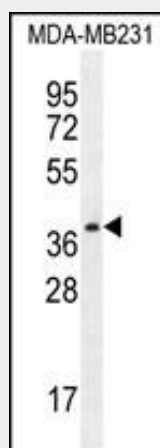
PRSS3 Antibody (N-term) - Protein Information

PRSS3 Antibody (N-term) - Protocols

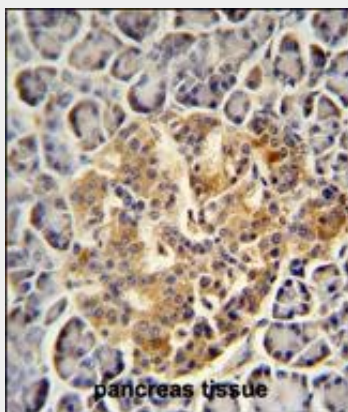
Provided below are standard protocols that you may find useful for product applications.

- [Western Blot](#)
- [Blocking Peptides](#)
- [Dot Blot](#)
- [Immunohistochemistry](#)
- [Immunofluorescence](#)
- [Immunoprecipitation](#)
- [Flow Cytometry](#)
- [Cell Culture](#)

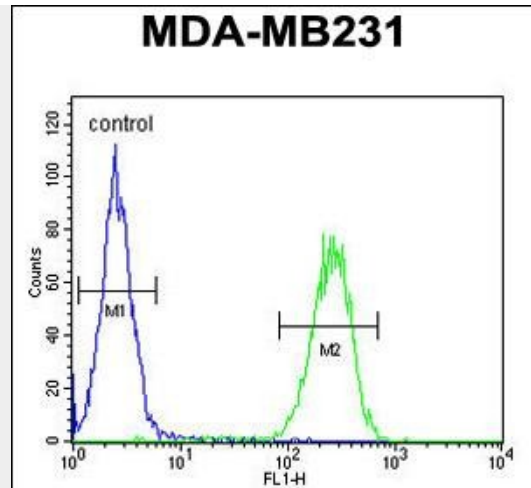
PRSS3 Antibody (N-term) - Images



PRSS3 Antibody (N-term) (Cat. #AP10489a) western blot analysis in MDA-MB231 cell line lysates (35ug/lane). This demonstrates the PRSS3 antibody detected the PRSS3 protein (arrow).



PRSS3 antibody (N-term) (Cat. #AP10489a) immunohistochemistry analysis in formalin fixed and paraffin embedded human pancreas tissue followed by peroxidase conjugation of the secondary antibody and DAB staining. This data demonstrates the use of the PRSS3 antibody (N-term) for immunohistochemistry. Clinical relevance has not been evaluated.



PRSS3 Antibody (N-term) (Cat. #AP10489a) flow cytometric analysis of MDA-MB231 cells (right histogram) compared to a negative control cell (left histogram). FITC-conjugated goat-anti-rabbit secondary antibodies were used for the analysis.

PRSS3 Antibody (N-term) - Background

PRSS3 encodes a trypsinogen, which is a member of the trypsin family of serine proteases. This enzyme is expressed in the brain and pancreas and is resistant to common trypsin inhibitors. It is active on peptide linkages involving the carboxyl group of lysine or arginine. PRSS3 is localized to the locus of T cell receptor beta variable orphans on chromosome 9. Four transcript variants encoding different isoforms have been described for this gene.

PRSS3 Antibody (N-term) - References

Jiang, G., et al. Gut 59(11):1535-1544(2010)
Nakanishi, J., et al. J. Invest. Dermatol. 130(4):944-952(2010)
Salameh, M.A., et al. J. Biol. Chem. 285(3):1939-1949(2010)
Rosendahl, J., et al. Pancreatology 10 (2-3), 243-249 (2010) :
Koistinen, H., et al. Neuroscience 160(1):97-102(2009)