

**ST7 Antibody (Center)**  
**Affinity Purified Rabbit Polyclonal Antibody (Pab)**  
**Catalog # AP10493c****Specification**

---

**ST7 Antibody (Center) - Product Information**

Application	FC, WB,E
Primary Accession	<a href="#">Q9NRC1</a>
Other Accession	<a href="#">Q2IBD0</a> , <a href="#">Q09YN2</a> , <a href="#">Q2OLD7</a> , <a href="#">Q99M96</a> , <a href="#">Q2PG42</a> , <a href="#">Q1RLU8</a> , <a href="#">A0M8U1</a> , <a href="#">A4D7R9</a> , <a href="#">NP_060882.2</a> , <a href="#">Q2OLA6</a> , <a href="#">Q09YI5</a>
Reactivity	Rat
Predicted	Bovine, Chicken, Zebrafish, Horse, Monkey, Mouse, Pig, Rabbit, Sheep
Host	Rabbit
Clonality	Polyclonal
Isotype	Rabbit IgG
Antigen Region	169-197

**ST7 Antibody (Center) - Additional Information****Gene ID** 7982**Other Names**

Suppressor of tumorigenicity 7 protein, Protein FAM4A1, Protein HELG, ST7, FAM4A1, HELG, RAY1

**Target/Specificity**

This ST7 antibody is generated from rabbits immunized with a KLH conjugated synthetic peptide between 169-197 amino acids from the Central region of human ST7.

**Dilution**

FC~~1:10~50

WB~~1:8000

E~~Use at an assay dependent concentration.

**Format**

Purified polyclonal antibody supplied in PBS with 0.09% (W/V) sodium azide. This antibody is purified through a protein A column, followed by peptide affinity purification.

**Storage**

Maintain refrigerated at 2-8°C for up to 2 weeks. For long term storage store at -20°C in small aliquots to prevent freeze-thaw cycles.

**Precautions**

ST7 Antibody (Center) is for research use only and not for use in diagnostic or therapeutic procedures.

**ST7 Antibody (Center) - Protein Information**

**Name** ST7

**Synonyms** FAM4A1, HELG, RAY1

**Function** May act as a tumor suppressor.

**Cellular Location**

Membrane; Multi-pass membrane protein

**Tissue Location**

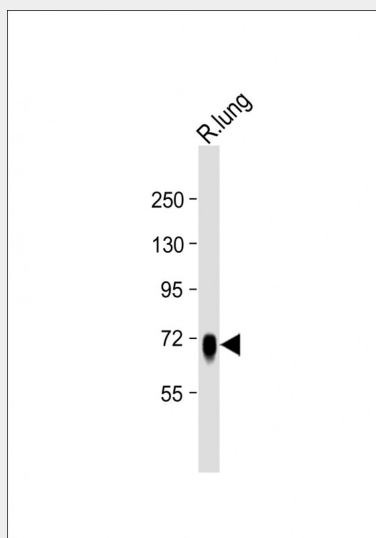
Ubiquitously expressed, with highest levels in heart, liver and pancreas.

### ST7 Antibody (Center) - Protocols

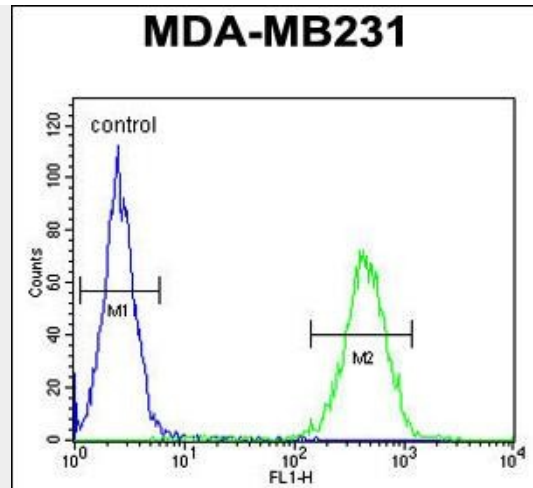
Provided below are standard protocols that you may find useful for product applications.

- [Western Blot](#)
- [Blocking Peptides](#)
- [Dot Blot](#)
- [Immunohistochemistry](#)
- [Immunofluorescence](#)
- [Immunoprecipitation](#)
- [Flow Cytometry](#)
- [Cell Culture](#)

### ST7 Antibody (Center) - Images



Anti-ST7 Antibody (Center) at 1:8000 dilution + Rat lung lysate Lysates/proteins at 20 µg per lane. Secondary Goat Anti-Rabbit IgG, (H+L), Peroxidase conjugated at 1/10000 dilution. Predicted band size : 67 kDa Blocking/Dilution buffer: 5% NFDM/TBST.



ST7 Antibody (Center) (Cat. #AP10493c) flow cytometric analysis of MDA-MB231 cells (right histogram) compared to a negative control (left histogram). FITC-conjugated goat-anti-rabbit secondary antibodies were used for the analysis.

#### **ST7 Antibody (Center) - Background**

The gene for this product maps to a region on chromosome 7 identified as an autism-susceptibility locus. Mutation screening of the entire coding region in autistic individuals failed to identify phenotype-specific variants, suggesting that coding mutations for this gene are unlikely to be involved in the etiology of autism. The function of this gene product has not been determined. Transcript variants encoding different isoforms of this protein have been described.

#### **ST7 Antibody (Center) - References**

Bailey, S.D., et al. Diabetes Care (2010) In press : Rose, J.E., et al. Mol. Med. 16 (7-8), 247-253 (2010) : Talmud, P.J., et al. Am. J. Hum. Genet. 85(5):628-642(2009) Guilmatre, A., et al. Arch. Gen. Psychiatry 66(9):947-956(2009) de Krom, M., et al. Biol. Psychiatry 65(7):625-630(2009)