

ITGAE Antibody (C-term)
Affinity Purified Rabbit Polyclonal Antibody (Pab)
Catalog # AP10494b**Specification**

ITGAE Antibody (C-term) - Product Information

Application	WB,E
Primary Accession	P38570
Other Accession	NP_002199.3
Reactivity	Human
Host	Rabbit
Clonality	Polyclonal
Isotype	Rabbit IgG
Calculated MW	130159
Antigen Region	1146-1173

ITGAE Antibody (C-term) - Additional Information**Gene ID** 3682**Other Names**

Integrin alpha-E, HML-1 antigen, Integrin alpha-IEL, Mucosal lymphocyte 1 antigen, CD103, Integrin alpha-E light chain, Integrin alpha-E heavy chain, ITGAE

Target/Specificity

This ITGAE antibody is generated from rabbits immunized with a KLH conjugated synthetic peptide between 1146-1173 amino acids from the C-terminal region of human ITGAE.

Dilution

WB~~1:1000

E~~Use at an assay dependent concentration.

Format

Purified polyclonal antibody supplied in PBS with 0.09% (W/V) sodium azide. This antibody is purified through a protein A column, followed by peptide affinity purification.

Storage

Maintain refrigerated at 2-8°C for up to 2 weeks. For long term storage store at -20°C in small aliquots to prevent freeze-thaw cycles.

Precautions

ITGAE Antibody (C-term) is for research use only and not for use in diagnostic or therapeutic procedures.

ITGAE Antibody (C-term) - Protein Information**Name** ITGAE

Function Integrin alpha-E/beta-7 is a receptor for E-cadherin. It mediates adhesion of intra-epithelial T-lymphocytes to epithelial cell monolayers.

Cellular Location

Membrane; Single-pass type I membrane protein.

Tissue Location

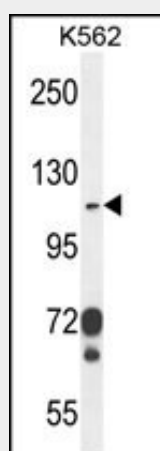
Expressed on a subclass of T-lymphocytes known as intra-epithelial lymphocytes which are located between mucosal epithelial cells

ITGAE Antibody (C-term) - Protocols

Provided below are standard protocols that you may find useful for product applications.

- [Western Blot](#)
- [Blocking Peptides](#)
- [Dot Blot](#)
- [Immunohistochemistry](#)
- [Immunofluorescence](#)
- [Immunoprecipitation](#)
- [Flow Cytometry](#)
- [Cell Culture](#)

ITGAE Antibody (C-term) - Images



ITGAE Antibody (C-term) (Cat. #AP10494b) western blot analysis in K562 cell line lysates (35ug/lane). This demonstrates the ITGAE antibody detected the ITGAE protein (arrow).

ITGAE Antibody (C-term) - Background

Integrins are heterodimeric integral membrane proteins composed of an alpha chain and a beta chain. ITGAE encodes an I-domain-containing alpha integrin that undergoes post-translational cleavage in the extracellular domain, yielding disulfide-linked heavy and light chains. In combination with the beta 7 integrin, this protein forms the E-cadherin binding integrin known as the human mucosal lymphocyte-1 antigen. This protein is preferentially expressed in human intestinal intraepithelial lymphocytes (IEL), and in addition to a role in adhesion, it may serve as an accessory molecule for IEL activation. [provided by

RefSeq].

ITGAE Antibody (C-term) - References

Silva, L.K., et al. Eur. J. Hum. Genet. 18(11):1221-1227(2010)
Liu, Y.H., et al. Ophthalmology 117(8):1645-1651(2010)
Rose, J.E., et al. Mol. Med. 16 (7-8), 247-253 (2010) :
Davila, S., et al. Genes Immun. 11(3):232-238(2010)
Heron, M., et al. Clin. Immunol. 133(1):117-125(2009)