

**NCALD Antibody (C-term)**  
**Affinity Purified Rabbit Polyclonal Antibody (Pab)**  
**Catalog # AP10495b****Specification**

---

**NCALD Antibody (C-term) - Product Information**

Application	WB,E
Primary Accession	<a href="#">P61601</a>
Other Accession	<a href="#">Q7SY75</a> , <a href="#">Q5PON0</a> , <a href="#">Q91X97</a> , <a href="#">Q4R4N4</a> , <a href="#">P62758</a> , <a href="#">P61602</a> , <a href="#">P37235</a> , <a href="#">P84076</a> , <a href="#">Q06AT1</a> , <a href="#">P84075</a> , <a href="#">P84074</a> , <a href="#">Q4PL64</a> , <a href="#">NP_001035715.1</a> , <a href="#">NP_001035720.1</a>
Reactivity	Human, Mouse
Predicted	Bovine, Pig, Rat, Chicken, Monkey, Xenopus
Host	Rabbit
Clonality	Polyclonal
Isotype	Rabbit IgG
Calculated MW	22245
Antigen Region	147-174

**NCALD Antibody (C-term) - Additional Information****Gene ID** 83988**Other Names**

Neurocalcin-delta, NCALD

**Target/Specificity**

This NCALD antibody is generated from rabbits immunized with a KLH conjugated synthetic peptide between 147-174 amino acids from the C-terminal region of human NCALD.

**Dilution**

WB~~1:1000

E~~Use at an assay dependent concentration.

**Format**

Purified polyclonal antibody supplied in PBS with 0.09% (W/V) sodium azide. This antibody is purified through a protein A column, followed by peptide affinity purification.

**Storage**

Maintain refrigerated at 2-8°C for up to 2 weeks. For long term storage store at -20°C in small aliquots to prevent freeze-thaw cycles.

**Precautions**

NCALD Antibody (C-term) is for research use only and not for use in diagnostic or therapeutic procedures.

**NCALD Antibody (C-term) - Protein Information**

**Name** NCALD

**Function** May be involved in the calcium-dependent regulation of rhodopsin phosphorylation. Binds three calcium ions.

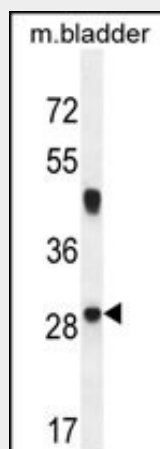
**Tissue Location**

Retina, cerebrum, cerebellum, brain stem, spinal cord, testis, ovary and small intestine

**NCALD Antibody (C-term) - Protocols**

Provided below are standard protocols that you may find useful for product applications.

- [Western Blot](#)
- [Blocking Peptides](#)
- [Dot Blot](#)
- [Immunohistochemistry](#)
- [Immunofluorescence](#)
- [Immunoprecipitation](#)
- [Flow Cytometry](#)
- [Cell Culture](#)

**NCALD Antibody (C-term) - Images**

NCALD Antibody (C-term) (Cat. #AP10495b) western blot analysis in mouse bladder tissue lysates (35ug/lane). This demonstrates the NCALD antibody detected the NCALD protein (arrow).

**NCALD Antibody (C-term) - Background**

NCALD encodes a member of the neuronal calcium sensor (NCS) family of calcium-binding proteins. The protein contains an N-terminal myristoylation signal and four EF-hand calcium binding loops. The protein is cytosolic at resting calcium levels; however, elevated intracellular calcium levels induce a conformational change that exposes the myristoyl group, resulting in protein association with membranes and partial co-localization with the perinuclear trans-golgi network. The protein is thought to be a regulator of G protein-coupled receptor signal transduction. Several alternatively spliced variants of this gene have been determined, all of which encode the same protein; additional

variants may exist but their biological validity has not been determined.

#### **NCALD Antibody (C-term) - References**

Rose, J.E., et al. Mol. Med. 16 (7-8), 247-253 (2010) :  
Cirulli, E.T., et al. Eur. J. Hum. Genet. 18(7):815-820(2010)  
Gill, M.B., et al. J. Biol. Chem. 284(21):14503-14512(2009)  
Venkataraman, V., et al. Biochemistry 47(25):6590-6601(2008)  
Kamiyama, M., et al. Hum. Genet. 122 (3-4), 397-407 (2007) :