

MRPS24 Antibody (Center)
Affinity Purified Rabbit Polyclonal Antibody (Pab)
Catalog # AP10497C**Specification**

MRPS24 Antibody (Center) - Product Information

Application	FC, IHC-P, WB,E
Primary Accession	O96EL2
Other Accession	NP_114403.1
Reactivity	Human
Host	Rabbit
Clonality	Polyclonal
Isotype	Rabbit IgG
Calculated MW	19015
Antigen Region	21-50

MRPS24 Antibody (Center) - Additional Information**Gene ID** 64951**Other Names**

28S ribosomal protein S24, mitochondrial, MRP-S24, S24mt, bMRP-47, bMRP47, MRPS24

Target/Specificity

This MRPS24 antibody is generated from rabbits immunized with a KLH conjugated synthetic peptide between 21-50 amino acids from the Central region of human MRPS24.

Dilution

FC~~1:10~50

IHC-P~~1:50~100

WB~~1:1000

E~~Use at an assay dependent concentration.

Format

Purified polyclonal antibody supplied in PBS with 0.09% (W/V) sodium azide. This antibody is purified through a protein A column, followed by peptide affinity purification.

Storage

Maintain refrigerated at 2-8°C for up to 2 weeks. For long term storage store at -20°C in small aliquots to prevent freeze-thaw cycles.

Precautions

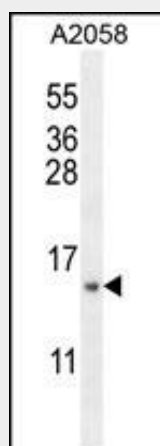
MRPS24 Antibody (Center) is for research use only and not for use in diagnostic or therapeutic procedures.

MRPS24 Antibody (Center) - Protein Information**Name** MRPS24

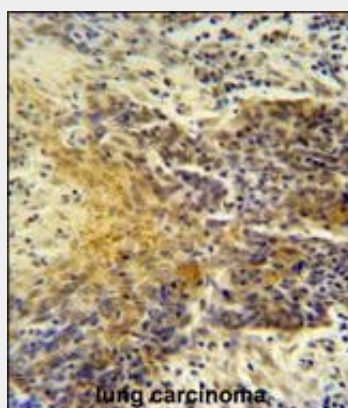
Cellular Location
Mitochondrion.**MRPS24 Antibody (Center) - Protocols**

Provided below are standard protocols that you may find useful for product applications.

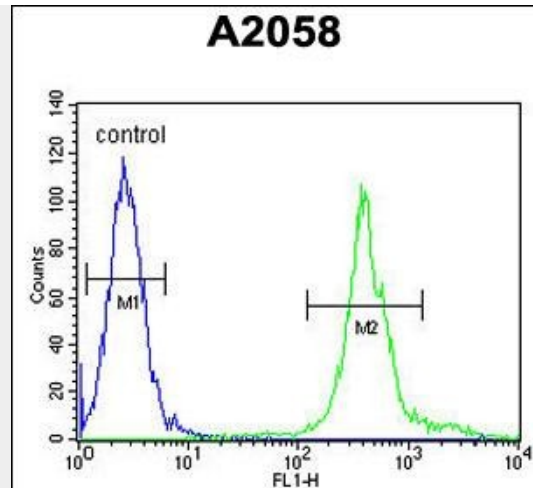
- [Western Blot](#)
- [Blocking Peptides](#)
- [Dot Blot](#)
- [Immunohistochemistry](#)
- [Immunofluorescence](#)
- [Immunoprecipitation](#)
- [Flow Cytometry](#)
- [Cell Culture](#)

MRPS24 Antibody (Center) - Images

MRPS24 Antibody (Center) (Cat. #AP10497c) western blot analysis in A2058 cell line lysates (35ug/lane). This demonstrates the MRPS24 antibody detected the MRPS24 protein (arrow).



MRPS24 antibody (Center) (Cat. #AP10497c) immunohistochemistry analysis in formalin fixed and paraffin embedded human lung carcinoma followed by peroxidase conjugation of the secondary antibody and DAB staining. This data demonstrates the use of the MRPS24 antibody (Center) for immunohistochemistry. Clinical relevance has not been evaluated.



MRPS24 Antibody (Center) (Cat. #AP10497c) flow cytometric analysis of A2058 cells (right histogram) compared to a negative control cell (left histogram). FITC-conjugated goat-anti-rabbit secondary antibodies were used for the analysis.

MRPS24 Antibody (Center) - Background

Mammalian mitochondrial ribosomal proteins are encoded by nuclear genes and help in protein synthesis within the mitochondrion. Mitochondrial ribosomes (mitoribosomes) consist of a small 28S subunit and a large 39S subunit. They have an estimated 75% protein to rRNA composition compared to prokaryotic ribosomes, where this ratio is reversed. Another difference between mammalian mitoribosomes and prokaryotic ribosomes is that the latter contain a 5S rRNA. Among different species, the proteins comprising the mitoribosome differ greatly in sequence, and sometimes in biochemical properties, which prevents easy recognition by sequence homology. MRPS24 encodes a 28S subunit protein. A pseudogene corresponding to this gene is found on chromosome 11. [provided by RefSeq].

MRPS24 Antibody (Center) - References

Lamesch, P., et al. Genomics 89(3):307-315(2007)
Ewing, R.M., et al. Mol. Syst. Biol. 3, 89 (2007) :
Zhang, Z., et al. Genomics 81(5):468-480(2003)
Kenmochi, N., et al. Genomics 77 (1-2), 65-70 (2001) :
Suzuki, T., et al. J. Biol. Chem. 276(35):33181-33195(2001)