

**CB018 Antibody (C-term)**  
**Affinity Purified Rabbit Polyclonal Antibody (Pab)**  
**Catalog # AP10502c****Specification**

---

**CB018 Antibody (C-term) - Product Information**

Application	FC, IHC-P, WB,E
Primary Accession	<a href="#">Q8N357</a>
Other Accession	<a href="#">NP_060347.2</a>
Reactivity	Human
Host	Rabbit
Clonality	Polyclonal
Isotype	Rabbit IgG
Calculated MW	40214
Antigen Region	329-358

**CB018 Antibody (C-term) - Additional Information****Gene ID** 54978**Other Names**

Solute carrier family 35 member F6, ANT2-binding protein, ANT2BP, Transport and Golgi organization 9 homolog, SLC35F6, C2orf18

**Target/Specificity**

This CB018 antibody is generated from rabbits immunized with a KLH conjugated synthetic peptide between 329-358 amino acids from the C-terminal region of human CB018.

**Dilution**

FC~~1:10~50

IHC-P~~1:50~100

WB~~1:1000

E~~Use at an assay dependent concentration.

**Format**

Purified polyclonal antibody supplied in PBS with 0.09% (W/V) sodium azide. This antibody is purified through a protein A column, followed by peptide affinity purification.

**Storage**

Maintain refrigerated at 2-8°C for up to 2 weeks. For long term storage store at -20°C in small aliquots to prevent freeze-thaw cycles.

**Precautions**

CB018 Antibody (C-term) is for research use only and not for use in diagnostic or therapeutic procedures.

**CB018 Antibody (C-term) - Protein Information**

**Name** SLC35F6

**Synonyms** C2orf18

**Function** Involved in the maintenance of mitochondrial membrane potential in pancreatic ductal adenocarcinoma (PDAC) cells. Promotes pancreatic ductal adenocarcinoma (PDAC) cell growth. May play a role as a nucleotide-sugar transporter.

**Cellular Location**

Mitochondrion. Lysosome membrane; Multi-pass membrane protein

**Tissue Location**

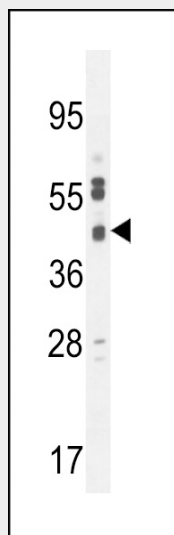
Expressed in pancreatic ductal adenocarcinoma (PDAC) (at protein level). Strongly expressed in prostate and thyroid Weakly expressed in lung, heart, liver and kidney

**CB018 Antibody (C-term) - Protocols**

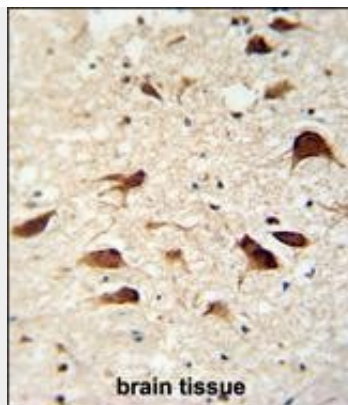
Provided below are standard protocols that you may find useful for product applications.

- [Western Blot](#)
- [Blocking Peptides](#)
- [Dot Blot](#)
- [Immunohistochemistry](#)
- [Immunofluorescence](#)
- [Immunoprecipitation](#)
- [Flow Cytometry](#)
- [Cell Culture](#)

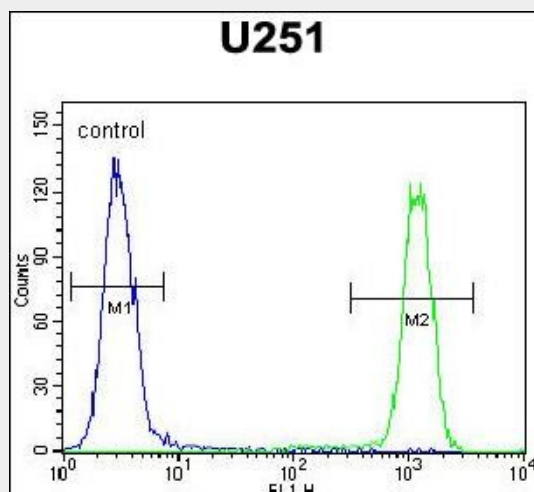
**CB018 Antibody (C-term) - Images**



CB018 Antibody (C-term) (Cat. #AP10502c) western blot analysis in U251 cell line lysates (35ug/lane). This demonstrates the CB018 antibody detected the CB018 protein (arrow).



CB018 antibody (C-term) (Cat. #AP10502c) immunohistochemistry analysis in formalin fixed and paraffin embedded human brain tissue followed by peroxidase conjugation of the secondary antibody and DAB staining. This data demonstrates the use of the CB018 antibody (C-term) for immunohistochemistry. Clinical relevance has not been evaluated.



CB018 Antibody (C-term) (Cat. #AP10502c) flow cytometric analysis of U251 cells (right histogram) compared to a negative control cell (left histogram). FITC-conjugated goat-anti-rabbit secondary antibodies were used for the analysis.

### CB018 Antibody (C-term) - Background

The exact function of C2orf18 remains unknown. It contains 1 DUF6 domain.

### CB018 Antibody (C-term) - References

- Kashiwaya, K., et al. Cancer Sci. 100(3):457-464(2009)
- Stelzl, U., et al. Cell 122(6):957-968(2005)
- Hillier, L.W., et al. Nature 434(7034):724-731(2005)
- Clark, H.F., et al. Genome Res. 13(10):2265-2270(2003)