

**S6A12 Antibody (N-term)**  
**Affinity Purified Rabbit Polyclonal Antibody (Pab)**  
**Catalog # AP10503a****Specification**

---

**S6A12 Antibody (N-term) - Product Information**

Application	FC, WB,E
Primary Accession	<a href="#">P48065</a>
Other Accession	<a href="#">NP_003035.3</a>
Reactivity	Human
Host	Rabbit
Clonality	Polyclonal
Isotype	Rabbit IgG
Calculated MW	69368
Antigen Region	9-38

**S6A12 Antibody (N-term) - Additional Information****Gene ID** 6539**Other Names**

Sodium- and chloride-dependent betaine transporter, BGT-1, Na(+)/Cl(-) betaine/GABA transporter, Solute carrier family 6 member 12, SLC6A12

**Target/Specificity**

This S6A12 antibody is generated from rabbits immunized with a KLH conjugated synthetic peptide between 9-38 amino acids from the N-terminal region of human S6A12.

**Dilution**

FC~~1:10~50

WB~~1:1000

E~~Use at an assay dependent concentration.

**Format**

Purified polyclonal antibody supplied in PBS with 0.09% (W/V) sodium azide. This antibody is purified through a protein A column, followed by peptide affinity purification.

**Storage**

Maintain refrigerated at 2-8°C for up to 2 weeks. For long term storage store at -20°C in small aliquots to prevent freeze-thaw cycles.

**Precautions**

S6A12 Antibody (N-term) is for research use only and not for use in diagnostic or therapeutic procedures.

**S6A12 Antibody (N-term) - Protein Information****Name** SLC6A12 ([HGNC:11045](#))

**Function** Transporter that mediates cellular uptake of betaine and GABA in a sodium- and chloride-dependent process (PubMed:[7589472](#)). May have a role in regulation of GABAergic transmission in the brain through the reuptake of GABA into presynaptic terminals, as well as in osmotic regulation. Probably also involved in renal and hepatic osmotic regulation (By similarity).

#### Cellular Location

Basolateral cell membrane {ECO:0000250|UniProtKB:P31651}; Multi-pass membrane protein. Cell membrane {ECO:0000250|UniProtKB:P31651}; Multi-pass membrane protein. Note=In kidney, locates in basolateral membranes of renal medulla. In liver, locates in hepatocytes cell membrane. {ECO:0000250|UniProtKB:P31651}

#### Tissue Location

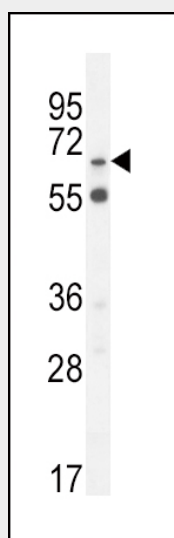
Expressed in kidney, liver, heart, skeletal muscle, placenta, and a widespread distribution in the brain

### S6A12 Antibody (N-term) - Protocols

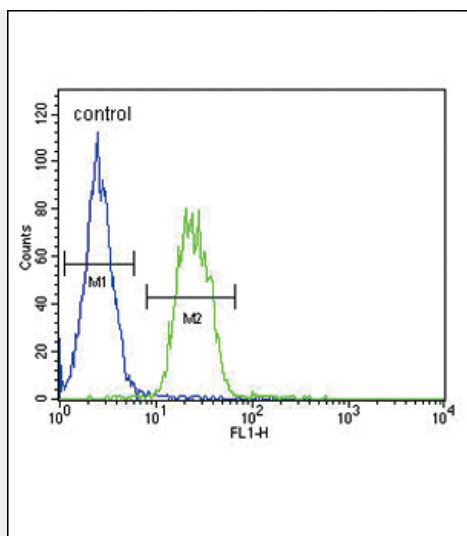
Provided below are standard protocols that you may find useful for product applications.

- [Western Blot](#)
- [Blocking Peptides](#)
- [Dot Blot](#)
- [Immunohistochemistry](#)
- [Immunofluorescence](#)
- [Immunoprecipitation](#)
- [Flow Cytometry](#)
- [Cell Culture](#)

### S6A12 Antibody (N-term) - Images



S6A12 Antibody (N-term) (Cat. #AP10503a) western blot analysis in MDA-MB231 cell line lysates (35ug/lane). This demonstrates the S6A12 antibody detected the S6A12 protein (arrow).



S6A12 Antibody (N-term) (Cat. #AP10503a) flow cytometric analysis of MDA-MB231 cells (right histogram) compared to a negative control cell (left histogram). FITC-conjugated goat-anti-rabbit secondary antibodies were used for the analysis.

#### **S6A12 Antibody (N-term) - Background**

Transports betaine and GABA. May have a role in regulation of GABAergic transmission in the brain through the reuptake of GABA into presynaptic terminals, as well as in osmotic regulation.

#### **S6A12 Antibody (N-term) - References**

Pasaje, C.F., et al. Ann. Hum. Genet. 74(4):326-334(2010) Kottgen, A., et al. Nat. Genet. 42(5):376-384(2010) Yokoyama, K., et al. Nephron Clin Pract 115 (4), C237-C243 (2010) : Chapuis, J., et al. Mol. Psychiatry 14(11):1004-1016(2009) Gratacos, M., et al. Am. J. Med. Genet. B Neuropsychiatr. Genet. 150B (6), 808-816 (2009) :