

MCAF2 Antibody (Center)
Affinity Purified Rabbit Polyclonal Antibody (Pab)
Catalog # AP10509c

Specification

MCAF2 Antibody (Center) - Product Information

Application	WB, IHC-P, FC,E
Primary Accession	Q5U623
Other Accession	NP_079273.2
Reactivity	Human
Host	Rabbit
Clonality	Polyclonal
Isotype	Rabbit IgG
Antigen Region	318-347

MCAF2 Antibody (Center) - Additional Information

Gene ID 80063

Other Names

Activating transcription factor 7-interacting protein 2, ATF7-interacting protein 2, MBD1-containing chromatin-associated factor 2, ATF7IP2, MCAF2

Target/Specificity

This MCAF2 antibody is generated from rabbits immunized with a KLH conjugated synthetic peptide between 318-347 amino acids from the Central region of human MCAF2.

Dilution

WB~~1:1000
IHC-P~~1:50~100
FC~~1:10~50
E~~Use at an assay dependent concentration.

Format

Purified polyclonal antibody supplied in PBS with 0.09% (W/V) sodium azide. This antibody is purified through a protein A column, followed by peptide affinity purification.

Storage

Maintain refrigerated at 2-8°C for up to 2 weeks. For long term storage store at -20°C in small aliquots to prevent freeze-thaw cycles.

Precautions

MCAF2 Antibody (Center) is for research use only and not for use in diagnostic or therapeutic procedures.

MCAF2 Antibody (Center) - Protein Information

Name ATF7IP2

Synonyms MCAF2

Function Recruiter that couples transcriptional factors to general transcription apparatus and thereby modulates transcription regulation and chromatin formation. Can both act as an activator or a repressor depending on the context. Mediates MBD1-dependent transcriptional repression, probably by recruiting complexes containing SETDB1. The complex formed with MBD1 and SETDB1 represses transcription and probably couples DNA methylation and histone H3 'Lys-9' trimethylation (H3K9me3) activity (Probable).

Cellular Location

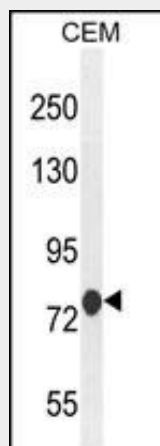
Nucleus.

MCAF2 Antibody (Center) - Protocols

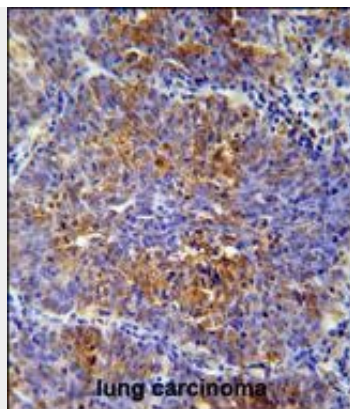
Provided below are standard protocols that you may find useful for product applications.

- [Western Blot](#)
- [Blocking Peptides](#)
- [Dot Blot](#)
- [Immunohistochemistry](#)
- [Immunofluorescence](#)
- [Immunoprecipitation](#)
- [Flow Cytometry](#)
- [Cell Culture](#)

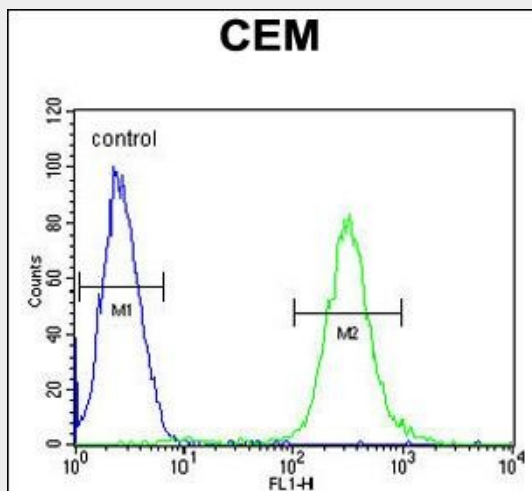
MCAF2 Antibody (Center) - Images



MCAF2 Antibody (Center) (Cat. #AP10509c) western blot analysis in CEM cell line lysates (35ug/lane). This demonstrates the MCAF2 antibody detected the MCAF2 protein (arrow).



MCAF2 Antibody (Center) (Cat. #AP10509c) immunohistochemistry analysis in formalin fixed and paraffin embedded human lung carcinoma followed by peroxidase conjugation of the secondary antibody and DAB staining. This data demonstrates the use of the MCAF2 Antibody (Center) for immunohistochemistry. Clinical relevance has not been evaluated.



MCAF2 Antibody (Center) (Cat. #AP10509c) flow cytometric analysis of CEM cells (right histogram) compared to a negative control cell (left histogram). FITC-conjugated goat-anti-rabbit secondary antibodies were used for the analysis.

MCAF2 Antibody (Center) - Background

Recruiter that couples transcriptional factors to general transcription apparatus and thereby modulates transcription regulation and chromatin formation. Can both act as an activator or a repressor depending on the context. Mediates MBD1-dependent transcriptional repression, probably by recruiting complexes containing SETDB1. The complex formed with MBD1 and SETDB1 represses transcription and probably couples DNA methylation and histone 'Lys-9' trimethylation activity (Probable).

MCAF2 Antibody (Center) - References

Adkins, D.E., et al. Mol. Psychiatry (2010) In press :
Ichimura, T., et al. J. Biol. Chem. 280(14):13928-13935(2005)