

**CC85C Antibody (N-term)**  
**Affinity Purified Rabbit Polyclonal Antibody (Pab)**  
**Catalog # AP10512a****Specification**

---

**CC85C Antibody (N-term) - Product Information**

Application	FC, IHC-P, WB,E
Primary Accession	<a href="#">A6NKD9</a>
Other Accession	<a href="#">E9Q6B2</a> , <a href="#">NP_001138467.1</a>
Reactivity	Human
Predicted	Mouse
Host	Rabbit
Clonality	Polyclonal
Isotype	Rabbit IgG
Calculated MW	45210
Antigen Region	56-85

**CC85C Antibody (N-term) - Additional Information****Gene ID** 317762**Other Names**

Coiled-coil domain-containing protein 85C, CCDC85C

**Target/Specificity**

This CC85C antibody is generated from rabbits immunized with a KLH conjugated synthetic peptide between 56-85 amino acids from the N-terminal region of human CC85C.

**Dilution**

FC~~1:10~50

IHC-P~~1:10~50

WB~~1:1000

E~~Use at an assay dependent concentration.

**Format**

Purified polyclonal antibody supplied in PBS with 0.09% (W/V) sodium azide. This antibody is purified through a protein A column, followed by peptide affinity purification.

**Storage**

Maintain refrigerated at 2-8°C for up to 2 weeks. For long term storage store at -20°C in small aliquots to prevent freeze-thaw cycles.

**Precautions**

CC85C Antibody (N-term) is for research use only and not for use in diagnostic or therapeutic procedures.

**CC85C Antibody (N-term) - Protein Information**

**Name** CCDC85C

**Function** May play a role in cell-cell adhesion and epithelium development through its interaction with proteins of the beta-catenin family (Probable). May play an important role in cortical development, especially in the maintenance of radial glia (By similarity).

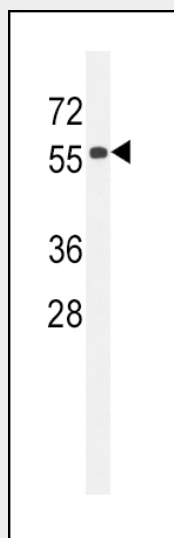
**Cellular Location**

Cell junction, tight junction {ECO:0000250|UniProtKB:E9Q6B2}. Cell junction, adherens junction. Note=Localizes to the apical junction of radial glia in the wall of lateral ventricles of the developing brain Colocalizes with TJP1 on the meshwork-like structure of adherens junctions on the lateral ventricles wall {ECO:0000250|UniProtKB:E9Q6B2}

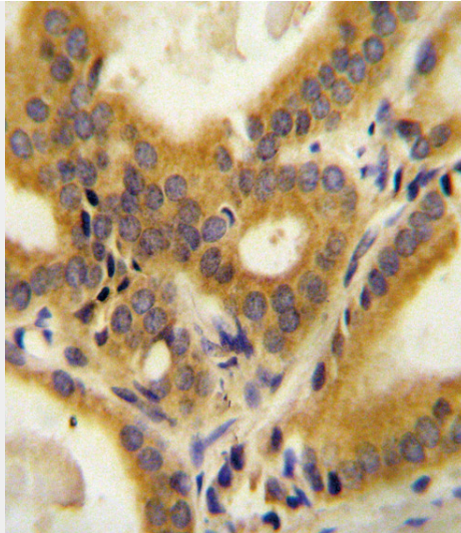
**CC85C Antibody (N-term) - Protocols**

Provided below are standard protocols that you may find useful for product applications.

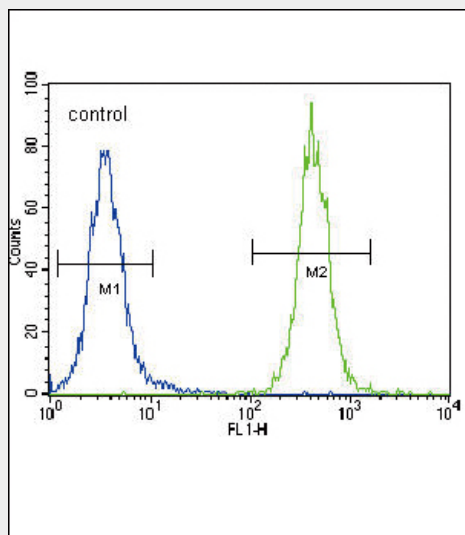
- [Western Blot](#)
- [Blocking Peptides](#)
- [Dot Blot](#)
- [Immunohistochemistry](#)
- [Immunofluorescence](#)
- [Immunoprecipitation](#)
- [Flow Cytometry](#)
- [Cell Culture](#)

**CC85C Antibody (N-term) - Images**

CC85C Antibody (N-term) (Cat. #AP10512a) western blot analysis in 293 cell line lysates (35ug/lane). This demonstrates the CC85C antibody detected the CC85C protein (arrow).



CC85C Antibody (N-term) (Cat. #AP10512a) immunohistochemistry analysis in formalin fixed and paraffin embedded human prostate carcinoma followed by peroxidase conjugation of the secondary antibody and DAB staining. This data demonstrates the use of the CC85C Antibody (N-term) for immunohistochemistry. Clinical relevance has not been evaluated.



CC85C Antibody (N-term) (Cat. #AP10512a) flow cytometric analysis of 293 cells (right histogram) compared to a negative control cell (left histogram). FITC-conjugated goat-anti-rabbit secondary antibodies were used for the analysis.

#### CC85C Antibody (N-term) - References

Heilig, R., et al. Nature 421(6923):601-607(2003)  
Venter, J.C., et al. Science 291(5507):1304-1351(2001)