

**IFT81 Antibody (C-term)**  
**Affinity Purified Rabbit Polyclonal Antibody (Pab)**  
**Catalog # AP10515b**

**Specification**

---

**IFT81 Antibody (C-term) - Product Information**

Application	WB,E
Primary Accession	<a href="#">Q8WYAO</a>
Other Accession	<a href="#">NP_113661.2</a> , <a href="#">NP_001137251.1</a> , <a href="#">NP_054774.2</a>
Reactivity	Human, Mouse
Host	Rabbit
Clonality	Polyclonal
Isotype	Rabbit IgG
Calculated MW	79746
Antigen Region	527-555

**IFT81 Antibody (C-term) - Additional Information**

**Gene ID** 28981

**Other Names**

Intraflagellar transport protein 81 homolog, Carnitine deficiency-associated protein expressed in ventricle 1, CDV-1, IFT81, CDV1

**Target/Specificity**

This IFT81 antibody is generated from rabbits immunized with a KLH conjugated synthetic peptide between 527-555 amino acids from the C-terminal region of human IFT81.

**Dilution**

WB~~1:1000

E~~Use at an assay dependent concentration.

**Format**

Purified polyclonal antibody supplied in PBS with 0.09% (W/V) sodium azide. This antibody is purified through a protein A column, followed by peptide affinity purification.

**Storage**

Maintain refrigerated at 2-8°C for up to 2 weeks. For long term storage store at -20°C in small aliquots to prevent freeze-thaw cycles.

**Precautions**

IFT81 Antibody (C-term) is for research use only and not for use in diagnostic or therapeutic procedures.

**IFT81 Antibody (C-term) - Protein Information**

**Name** IFT81

## Synonyms CDV1

**Function** Component of the intraflagellar transport (IFT) complex B: together with IFT74, forms a tubulin-binding module that specifically mediates transport of tubulin within the cilium. Binds tubulin via its CH (calponin-homology)-like region (PubMed:[23990561](#)). Required for ciliogenesis (PubMed:[23990561](#), PubMed:[27666822](#)). Required for proper regulation of SHH signaling (PubMed:[27666822](#)). Plays an important role during spermatogenesis by modulating the assembly and elongation of the sperm flagella (By similarity).

## Cellular Location

Cell projection, cilium. Cytoplasm {ECO:0000250|UniProtKB:O35594}. Cytoplasm, cytoskeleton, cilium basal body

## Tissue Location

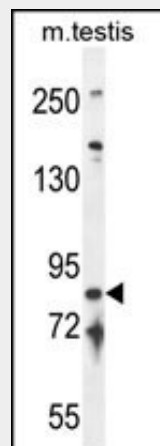
Highly expressed in testis, moderately in ovary, heart, liver, skeletal muscle, kidney and pancreas, low in prostate, brain, placenta and lung and not detected in spleen, thymus, small intestine and colon. Isoform CDV-1R is abundantly expressed in testis

## IFT81 Antibody (C-term) - Protocols

Provided below are standard protocols that you may find useful for product applications.

- [Western Blot](#)
- [Blocking Peptides](#)
- [Dot Blot](#)
- [Immunohistochemistry](#)
- [Immunofluorescence](#)
- [Immunoprecipitation](#)
- [Flow Cytometry](#)
- [Cell Culture](#)

## IFT81 Antibody (C-term) - Images



IFT81 Antibody (C-term) (Cat. #AP10515b) western blot analysis in mouse testis tissue lysates (35ug/lane). This demonstrates the IFT81 antibody detected the IFT81 protein (arrow).

## IFT81 Antibody (C-term) - Background

Isoform CDV-1 may be involved in cardiac hypertrophy caused by carnitine deficiency (By similarity).

Isoform CDV-1R appears to play a role in development of the testis and spermatogenesis (By similarity).

#### **IFT81 Antibody (C-term) - References**

Melzer, D., et al. PLoS Genet. 4 (5), E1000072 (2008) :  
Lamesch, P., et al. Genomics 89(3):307-315(2007)  
Peng, J., et al. Mol. Biol. Rep. 29(4):353-362(2002)  
Higashi, M., et al. Mamm. Genome 11(12):1053-1057(2000)