

**PIGX Antibody (N-term)**  
**Affinity Purified Rabbit Polyclonal Antibody (Pab)**  
**Catalog # AP10521a**

**Specification**

---

**PIGX Antibody (N-term) - Product Information**

Application	WB, IHC-P,E
Primary Accession	<a href="#">Q8TBF5</a>
Other Accession	<a href="#">NP_060331.3</a> , <a href="#">NP_001159776.1</a>
Reactivity	Human, Mouse
Host	Rabbit
Clonality	Polyclonal
Isotype	Rabbit IgG
Calculated MW	28788
Antigen Region	67-95

**PIGX Antibody (N-term) - Additional Information**

**Gene ID** 54965

**Other Names**

Phosphatidylinositol-glycan biosynthesis class X protein, PIG-X, PIGX

**Target/Specificity**

This PIGX antibody is generated from rabbits immunized with a KLH conjugated synthetic peptide between 67-95 amino acids from the N-terminal region of human PIGX.

**Dilution**

WB~~1:1000  
IHC-P~~1:50~100

**Format**

Purified polyclonal antibody supplied in PBS with 0.09% (W/V) sodium azide. This antibody is purified through a protein A column, followed by peptide affinity purification.

**Storage**

Maintain refrigerated at 2-8°C for up to 2 weeks. For long term storage store at -20°C in small aliquots to prevent freeze-thaw cycles.

**Precautions**

PIGX Antibody (N-term) is for research use only and not for use in diagnostic or therapeutic procedures.

**PIGX Antibody (N-term) - Protein Information**

**Name** PIGX

**Function** Essential component of glycosylphosphatidylinositol- mannosyltransferase 1 which

transfers the first of the 4 mannoses in the GPI-anchor precursors during GPI-anchor biosynthesis. Probably acts by stabilizing the mannosyltransferase PIGM (By similarity).

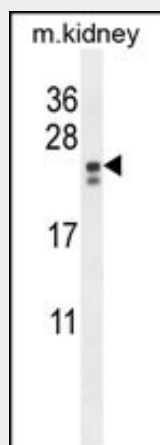
**Cellular Location**

Endoplasmic reticulum membrane; Single-pass type I membrane protein

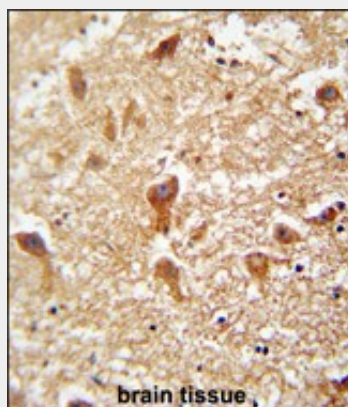
**PIGX Antibody (N-term) - Protocols**

Provided below are standard protocols that you may find useful for product applications.

- [Western Blot](#)
- [Blocking Peptides](#)
- [Dot Blot](#)
- [Immunohistochemistry](#)
- [Immunofluorescence](#)
- [Immunoprecipitation](#)
- [Flow Cytometry](#)
- [Cell Culture](#)

**PIGX Antibody (N-term) - Images**

PIGX Antibody (N-term) (Cat. #AP10521a) western blot analysis in mouse kidney tissue lysates (35ug/lane). This demonstrates the PIGX antibody detected the PIGX protein (arrow).



PIGX antibody (N-term) (Cat. #AP10521a) immunohistochemistry analysis in formalin fixed and paraffin embedded human brain tissue followed by peroxidase conjugation of the secondary antibody and DAB staining. This data demonstrates the use of the PIGX antibody (N-term) for

immunohistochemistry. Clinical relevance has not been evaluated.

**PIGX Antibody (N-term) - Background**

Essential component of glycosylphosphatidylinositol-mannosyltransferase 1 which transfers the first of the 4 mannoses in the GPI-anchor precursors during GPI-anchor biosynthesis. Probably acts by stabilizing the mannosyltransferase PIGM (By similarity).