

WWC3 Antibody (C-term)
Affinity Purified Rabbit Polyclonal Antibody (Pab)
Catalog # AP10525b**Specification**

WWC3 Antibody (C-term) - Product Information

Application	IHC-P, WB,E
Primary Accession	O9ULE0
Other Accession	NP_056506.2
Reactivity	Human
Host	Rabbit
Clonality	Polyclonal
Isotype	Rabbit IgG
Calculated MW	136649
Antigen Region	1008-1037

WWC3 Antibody (C-term) - Additional Information**Gene ID** 55841**Other Names**

Protein WWC3, WWC3, KIAA1280

Target/Specificity

This WWC3 antibody is generated from rabbits immunized with a KLH conjugated synthetic peptide between 1008-1037 amino acids from the C-terminal region of human WWC3.

Dilution

IHC-P~~1:50~100

WB~~1:1000

E~~Use at an assay dependent concentration.

Format

Purified polyclonal antibody supplied in PBS with 0.09% (W/V) sodium azide. This antibody is purified through a protein A column, followed by peptide affinity purification.

Storage

Maintain refrigerated at 2-8°C for up to 2 weeks. For long term storage store at -20°C in small aliquots to prevent freeze-thaw cycles.

Precautions

WWC3 Antibody (C-term) is for research use only and not for use in diagnostic or therapeutic procedures.

WWC3 Antibody (C-term) - Protein Information**Name** WWC3 ([HGNC:29237](#))

Synonyms KIAA1280

Function Regulator of the Hippo signaling pathway, also known as the Salvador-Warts-Hippo (SWH) pathway. Enhances phosphorylation of LATS1 and YAP1 and negatively regulates cell proliferation and organ growth due to a suppression of the transcriptional activity of YAP1, the major effector of the Hippo pathway.

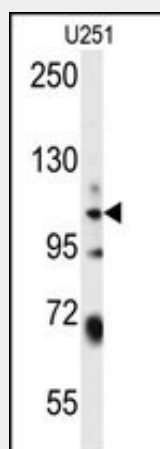
Cellular Location

Cytoplasm, cytosol.

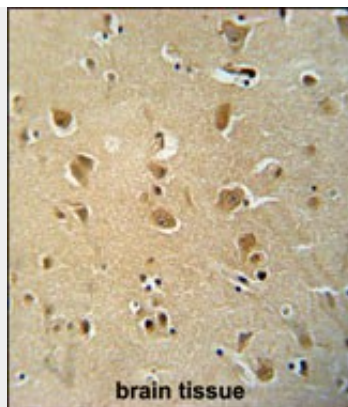
WWC3 Antibody (C-term) - Protocols

Provided below are standard protocols that you may find useful for product applications.

- [Western Blot](#)
- [Blocking Peptides](#)
- [Dot Blot](#)
- [Immunohistochemistry](#)
- [Immunofluorescence](#)
- [Immunoprecipitation](#)
- [Flow Cytometry](#)
- [Cell Culture](#)

WWC3 Antibody (C-term) - Images

WWC3 Antibody (C-term) (Cat. #AP10525b) western blot analysis in U251 cell line lysates (35ug/lane). This demonstrates the WWC3 antibody detected the WWC3 protein (arrow).



WWC3 antibody (C-term) (Cat. #AP10525b) immunohistochemistry analysis in formalin fixed and paraffin embedded human brain tissue followed by peroxidase conjugation of the secondary antibody and DAB staining. This data demonstrates the use of the WWC3 antibody (C-term) for immunohistochemistry. Clinical relevance has not been evaluated.

WWC3 Antibody (C-term) - References

Kimura, K., et al. Genome Res. 16(1):55-65(2006)