

5HT3E Antibody (Center)
Affinity Purified Rabbit Polyclonal Antibody (Pab)
Catalog # AP10528c**Specification**

5HT3E Antibody (Center) - Product Information

Application	WB, FC,E
Primary Accession	A5X5Y0
Other Accession	NP_872395.2
Reactivity	Human
Host	Rabbit
Clonality	Polyclonal
Isotype	Rabbit IgG
Calculated MW	51438
Antigen Region	126-154

5HT3E Antibody (Center) - Additional Information**Gene ID** 285242**Other Names**

5-hydroxytryptamine receptor 3E, 5-HT3-E, 5-HT3E, Serotonin receptor 3E, HTR3E

Target/Specificity

This 5HT3E antibody is generated from rabbits immunized with a KLH conjugated synthetic peptide between 126-154 amino acids from the Central region of human 5HT3E.

Dilution

WB~~1:1000

FC~~1:10~50

E~~Use at an assay dependent concentration.

Format

Purified polyclonal antibody supplied in PBS with 0.09% (W/V) sodium azide. This antibody is purified through a protein A column, followed by peptide affinity purification.

Storage

Maintain refrigerated at 2-8°C for up to 2 weeks. For long term storage store at -20°C in small aliquots to prevent freeze-thaw cycles.

Precautions

5HT3E Antibody (Center) is for research use only and not for use in diagnostic or therapeutic procedures.

5HT3E Antibody (Center) - Protein Information**Name** HTR3E ([HGNC:24005](#))

Function Forms serotonin (5-hydroxytryptamine/5-HT₃)-activated cation- selective channel complexes, which when activated cause fast, depolarizing responses in neurons.

Cellular Location

Postsynaptic cell membrane; Multi-pass membrane protein. Cell membrane; Multi-pass membrane protein. Note=Presumably retained within the endoplasmic reticulum unless complexed with HTR3A.

Tissue Location

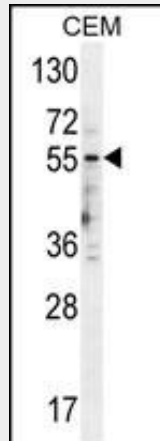
Expressed in adult colon and intestine.

5HT3E Antibody (Center) - Protocols

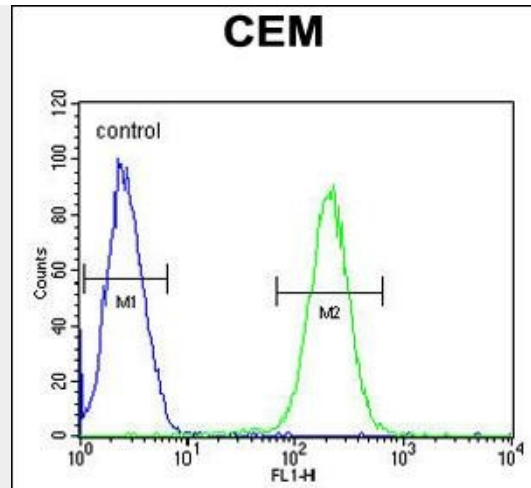
Provided below are standard protocols that you may find useful for product applications.

- [Western Blot](#)
- [Blocking Peptides](#)
- [Dot Blot](#)
- [Immunohistochemistry](#)
- [Immunofluorescence](#)
- [Immunoprecipitation](#)
- [Flow Cytometry](#)
- [Cell Culture](#)

5HT3E Antibody (Center) - Images



5HT3E Antibody (Center) (Cat. #AP10528c) western blot analysis in CEM cell line lysates (35ug/lane). This demonstrates the 5HT3E antibody detected the 5HT3E protein (arrow).



5HT3E Antibody (Center) (Cat. #AP10528c) flow cytometric analysis of CEM cells (right histogram) compared to a negative control cell (left histogram). FITC-conjugated goat-anti-rabbit secondary antibodies were used for the analysis.

5HT3E Antibody (Center) - Background

The product of this gene belongs to the ligand-gated ion channel receptor superfamily. HTR3E encodes a subunit E of the type 3 receptor for 5-hydroxytryptamine (serotonin), a biogenic hormone that functions as a neurotransmitter, a hormone, and a mitogen. This receptor causes fast, depolarizing responses in neurons after activation. Genes encoding subunits C, D and E form a cluster on chromosome 3. An alternative splice variant has been described but its full length sequence has not been determined.

5HT3E Antibody (Center) - References

- Walstab, J., et al. J. Biol. Chem. 285(35):26956-26965(2010)
- Hammer, C., et al. Pharmacogenomics 11(7):943-950(2010)
- Lennertz, L., et al. Eur Neuropsychopharmacol 20(6):414-420(2010)
- Goecke, T.W., et al. Acta Obstet Gynecol Scand 89(1):7-14(2010)
- Schuhmacher, A., et al. Pharmacogenet. Genomics 19(11):843-851(2009)