

**LRC18 Antibody (C-term)**  
**Affinity Purified Rabbit Polyclonal Antibody (Pab)**  
**Catalog # AP10529b****Specification**

---

**LRC18 Antibody (C-term) - Product Information**

Application	WB, IHC-P,E
Primary Accession	<a href="#">Q8N456</a>
Other Accession	<a href="#">NP_001006940.3</a>
Reactivity	Human, Mouse
Host	Rabbit
Clonality	Polyclonal
Isotype	Rabbit IgG
Calculated MW	29737
Antigen Region	149-177

**LRC18 Antibody (C-term) - Additional Information****Gene ID** 474354**Other Names**

Leucine-rich repeat-containing protein 18, LRRC18

**Target/Specificity**

This LRC18 antibody is generated from rabbits immunized with a KLH conjugated synthetic peptide between 149-177 amino acids from the C-terminal region of human LRC18.

**Dilution**

WB~~1:1000

IHC-P~~1:50~100

**Format**

Purified polyclonal antibody supplied in PBS with 0.09% (W/V) sodium azide. This antibody is purified through a protein A column, followed by peptide affinity purification.

**Storage**

Maintain refrigerated at 2-8°C for up to 2 weeks. For long term storage store at -20°C in small aliquots to prevent freeze-thaw cycles.

**Precautions**

LRC18 Antibody (C-term) is for research use only and not for use in diagnostic or therapeutic procedures.

**LRC18 Antibody (C-term) - Protein Information****Name** LRRC18**Function** May be involved in the regulation of spermatogenesis and sperm maturation.

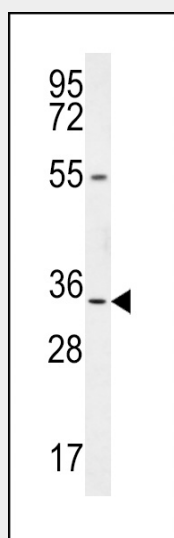
**Cellular Location**

Cytoplasm.

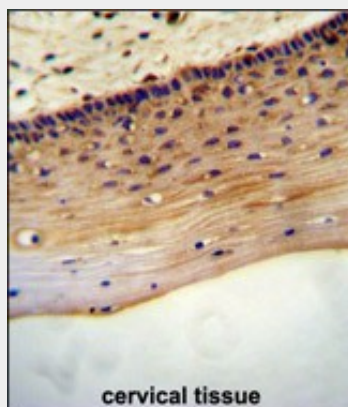
**LRC18 Antibody (C-term) - Protocols**

Provided below are standard protocols that you may find useful for product applications.

- [Western Blot](#)
- [Blocking Peptides](#)
- [Dot Blot](#)
- [Immunohistochemistry](#)
- [Immunofluorescence](#)
- [Immunoprecipitation](#)
- [Flow Cytometry](#)
- [Cell Culture](#)

**LRC18 Antibody (C-term) - Images**

LRC18 Antibody (C-term) (Cat. #AP10529b) western blot analysis in mouse bladder tissue lysates (35ug/lane). This demonstrates the LRC18 antibody detected the LRC18 protein (arrow).



LRC18 antibody (C-term) (Cat. #AP10529b) immunohistochemistry analysis in formalin fixed and paraffin embedded human cervical tissue followed by peroxidase conjugation of the secondary antibody and DAB staining. This data demonstrates the use of the LRC18 antibody (C-term) for

immunohistochemistry. Clinical relevance has not been evaluated.

#### **LRC18 Antibody (C-term) - Background**

May be involved in the regulation of spermatogenesis and sperm maturation (By similarity).

#### **LRC18 Antibody (C-term) - References**

Han, J.W., et al. Nat. Genet. 41(11):1234-1237(2009)  
Lamesch, P., et al. Genomics 89(3):307-315(2007)  
O'Donnell, C.J., et al. BMC Med. Genet. 8 SUPPL 1, S4 (2007) :  
Nie, D.S., et al. Biochem. Biophys. Res. Commun. 328(4):1010-1018(2005)  
Clark, H.F., et al. Genome Res. 13(10):2265-2270(2003)